

## Why should labs care about sustainability?



Large environmental footprint

- Energy use of labs is 10x higher than office spaces
- Significant use of natural resources
- Major production of plastic waste (EPFL produces 70 tonnes of plastic waste per year) and of chemical and biological waste (19 tonnes in 2021 for SV and STI)



Climate emergency

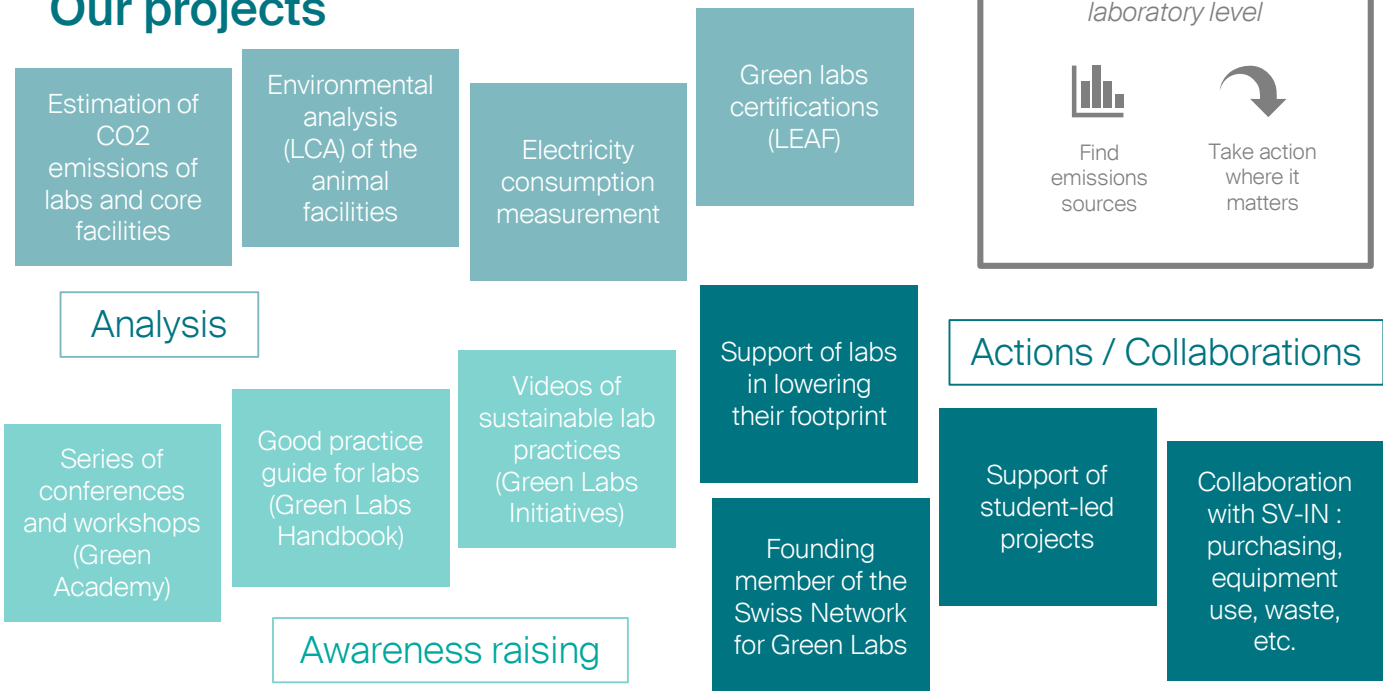
- According to the IPCC, limiting warming to 1.5°C requires immediate, drastic emissions reduction from all sectors of the economy. Every degree counts!
- Climate change causes an increase in natural catastrophes: heat waves, floods, megafires, etc.



Political situation

- Electricity and natural gas supply shortages
- Volatility of raw materials availability
- EPFL is committed to halving its greenhouse gas emissions by 2030

## Our projects



### The CO2 calculator

A tool to estimate the greenhouse gas emissions at the laboratory level



Find emissions sources



Take action where it matters



### Our team

SV Sustainability is a unit of the SV deanship. The team closely collaborates with EPFL Sustainability (VPT) and sustainability teams in other Schools.



### Green Team

A steering and consultation committee, composed of SV lab members and admin staff, which provides us with guidance and helps in promoting sustainability projects.

Comments, project ideas, questions about sustainability?