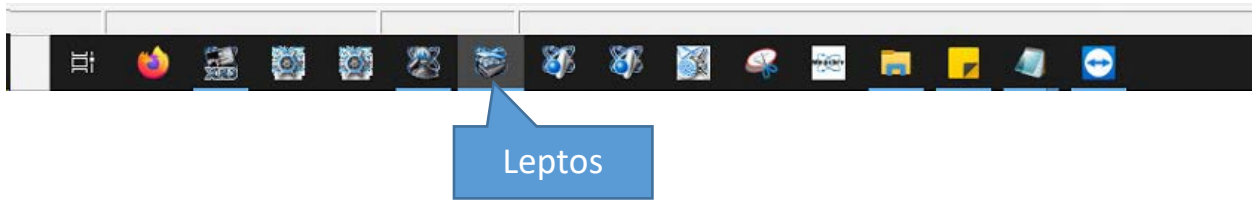
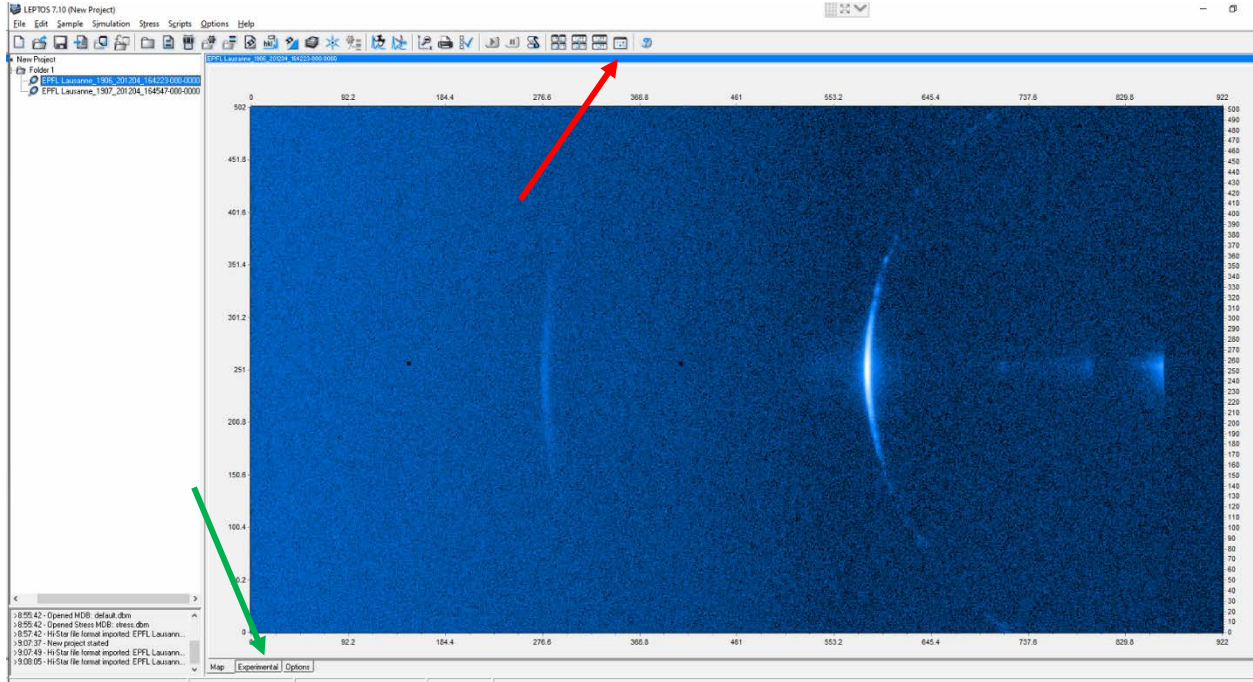


1. Open Leptos.

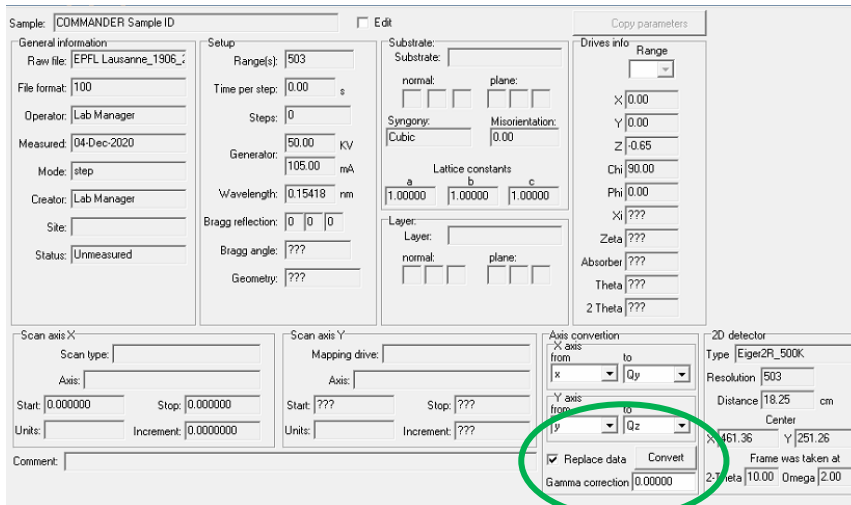


2. Go to File – Import Data. Import directly the image file, gfrm format. The image will appear.



Depending on how the settings are set in leptos you may have 2, 3 or 4 windows showing options or image(s). To make things easier click on the icon showing one screen only (red arrow).

3. To transform to  $Q$  ( $\text{\AA}^{-1}$ , multiply by 10 for  $\text{nm}^{-1}$ ) click on the experiment tab (green arrow) and on convert in the menu, making sure the "replace data" box is selected (accept other defaults).





6. Leptos is made for texture analysis and has tons of functions. For visualizing, one interesting one in this context could be having a look at the intensities in 3D. Right click on image and select 3D:

