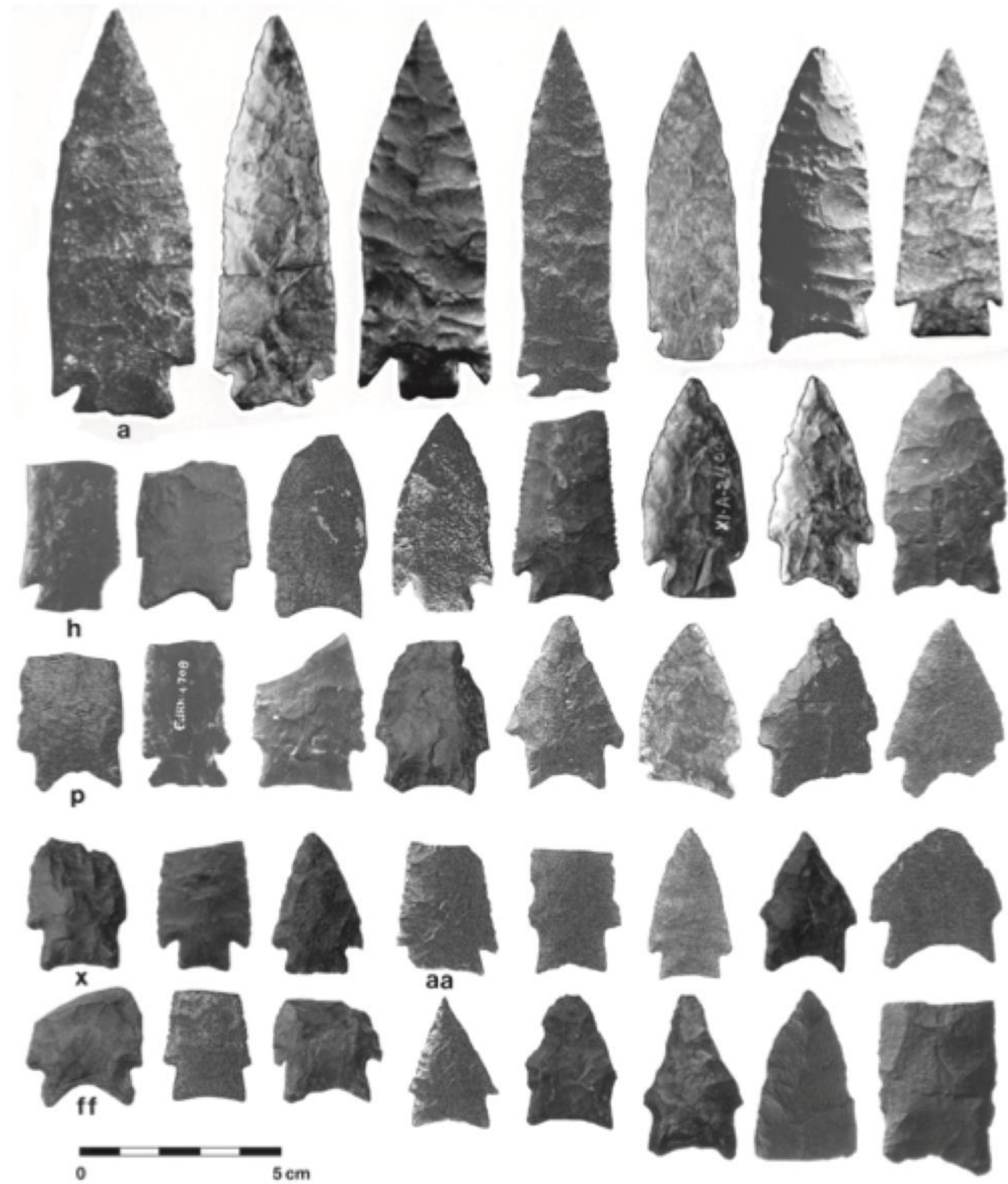


Laboratory EAST
Greenhouse Studies II & III

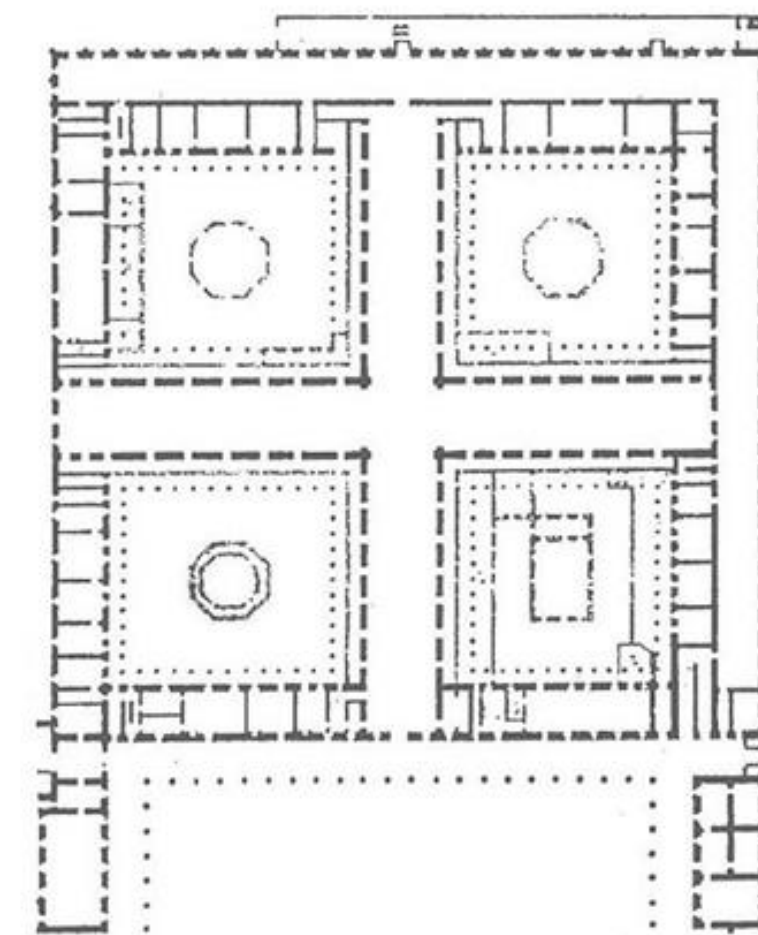
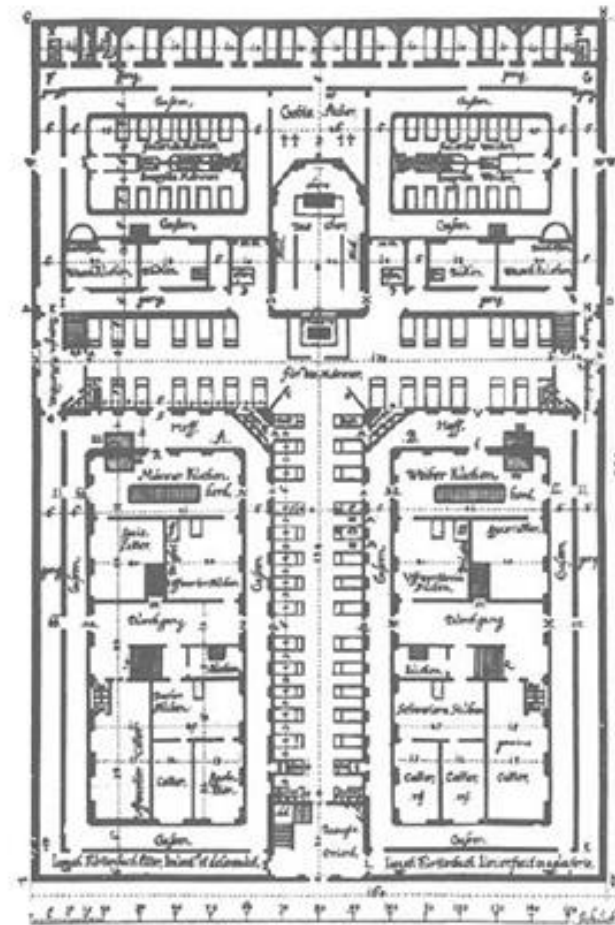
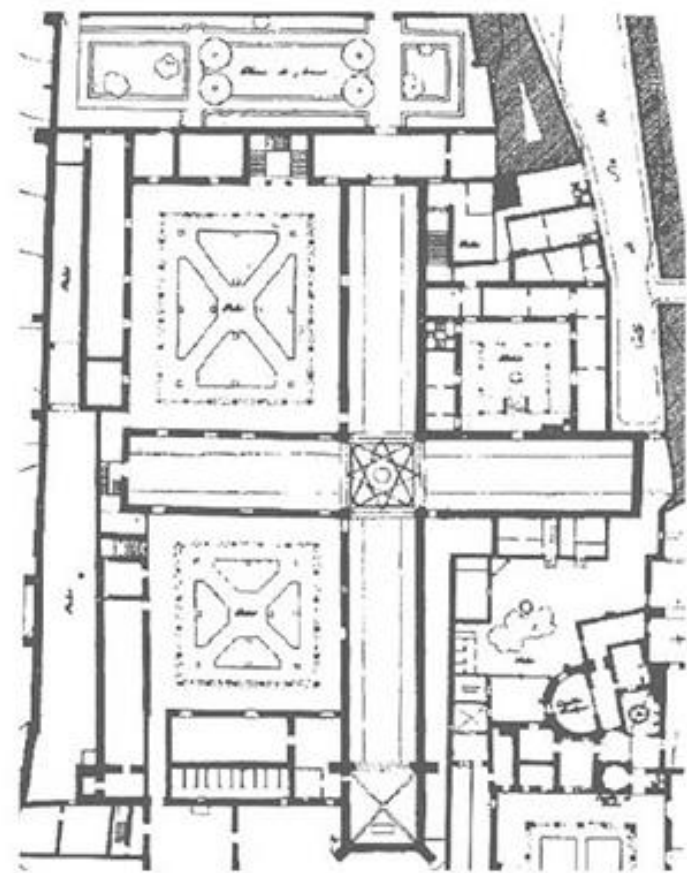
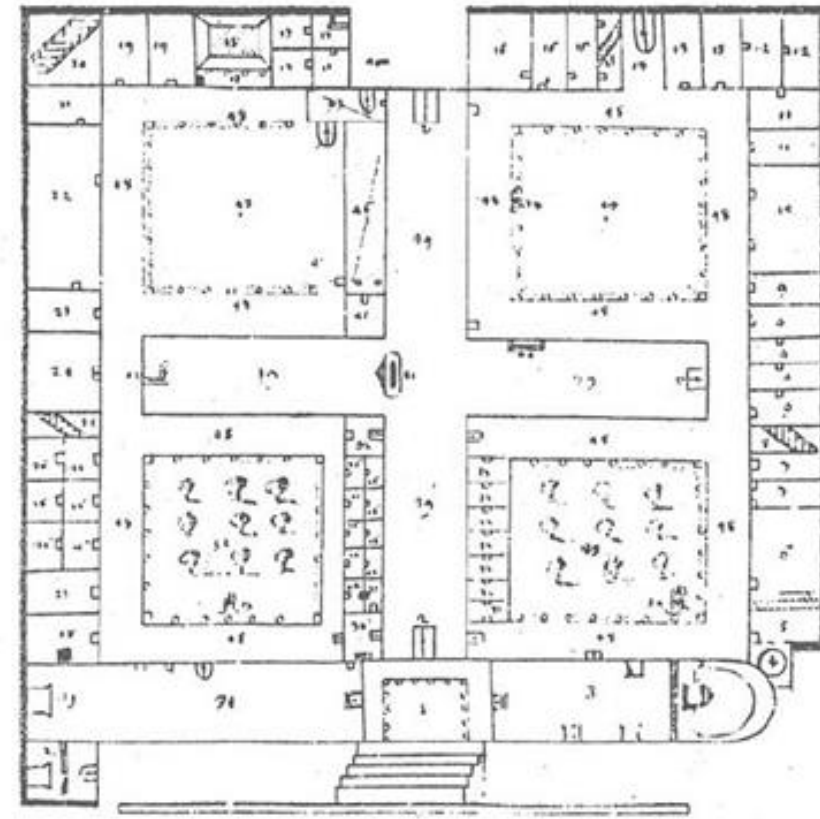
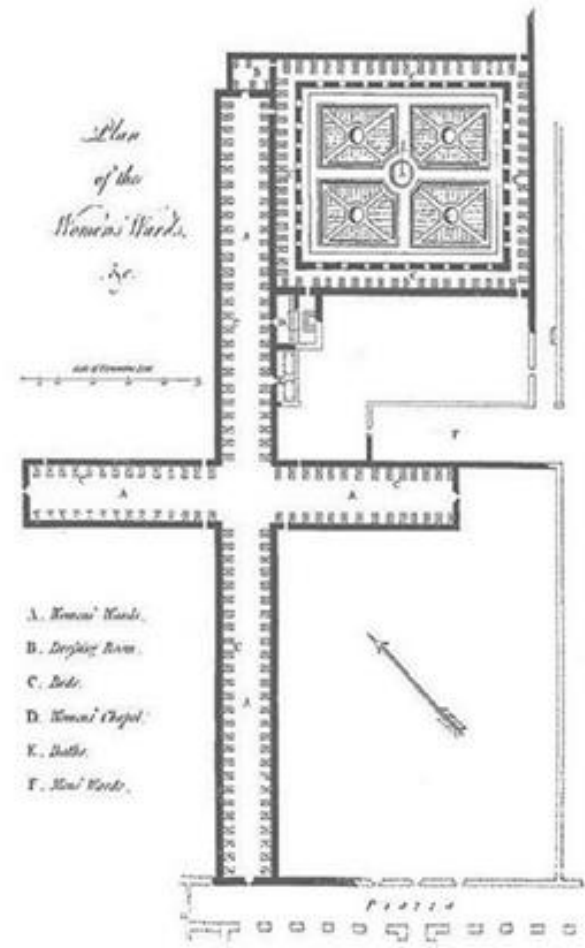
EAST

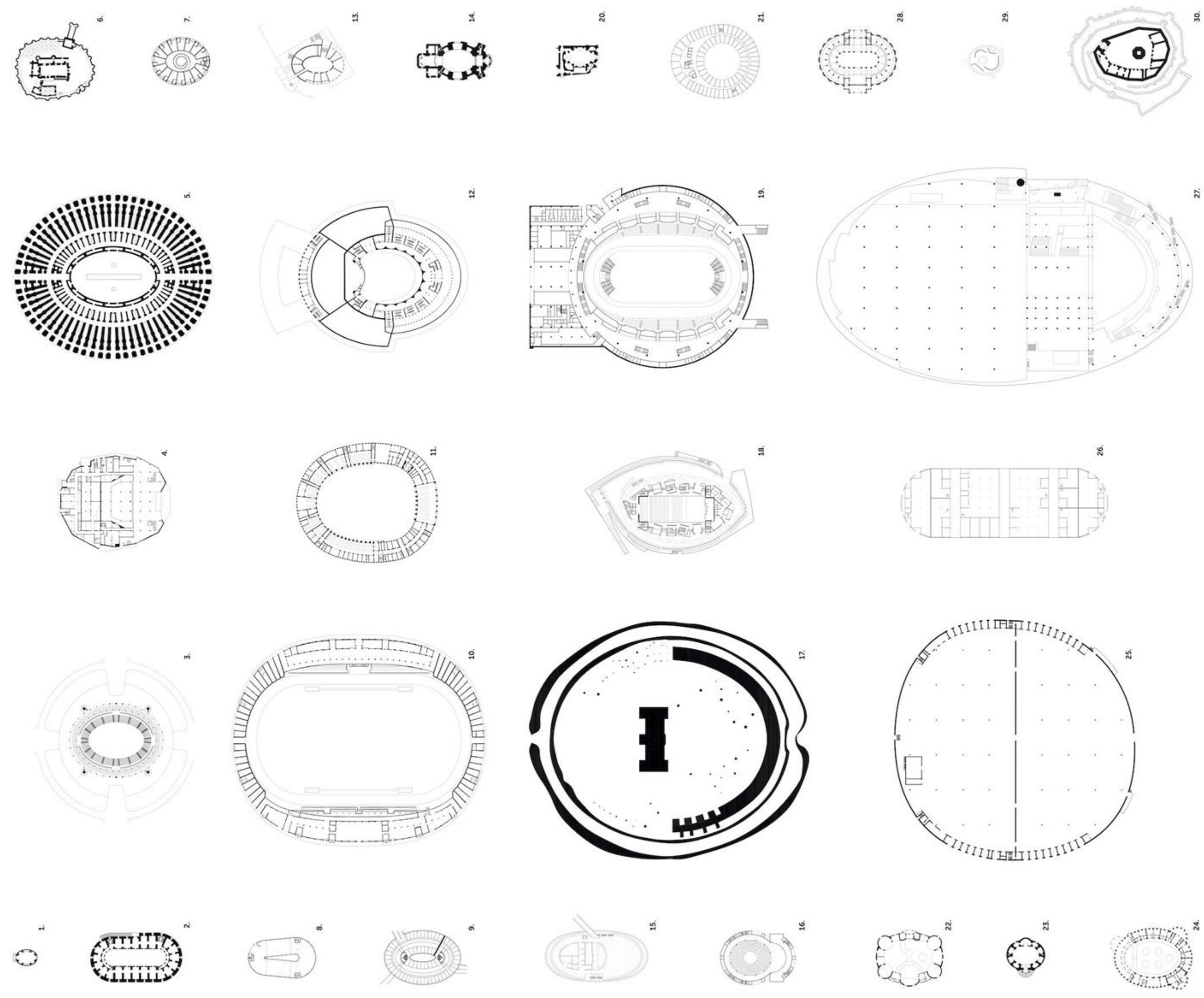
Laboratory of Elementary Architecture
and Studies of Types

Anja Fröhlich
Martin Fröhlich
Tiago P. Borges
Luciano Antonietti
Melanie Schmidiger



Early Nesikep Period bifaces in Taylor, Walter W. *A Study of Archeology*. (CAI ed. Carbondale, Ill.: Southern Illinois University at Carbondale, 1983 [1948])





Laboratory EAST. Design Studio, TACKLE THE TYPE I Stade de La Pontaise. 2020-21



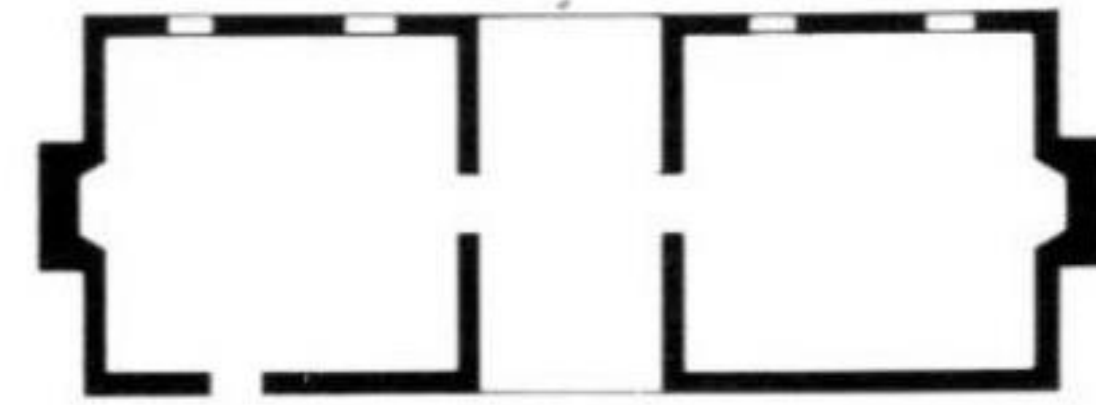
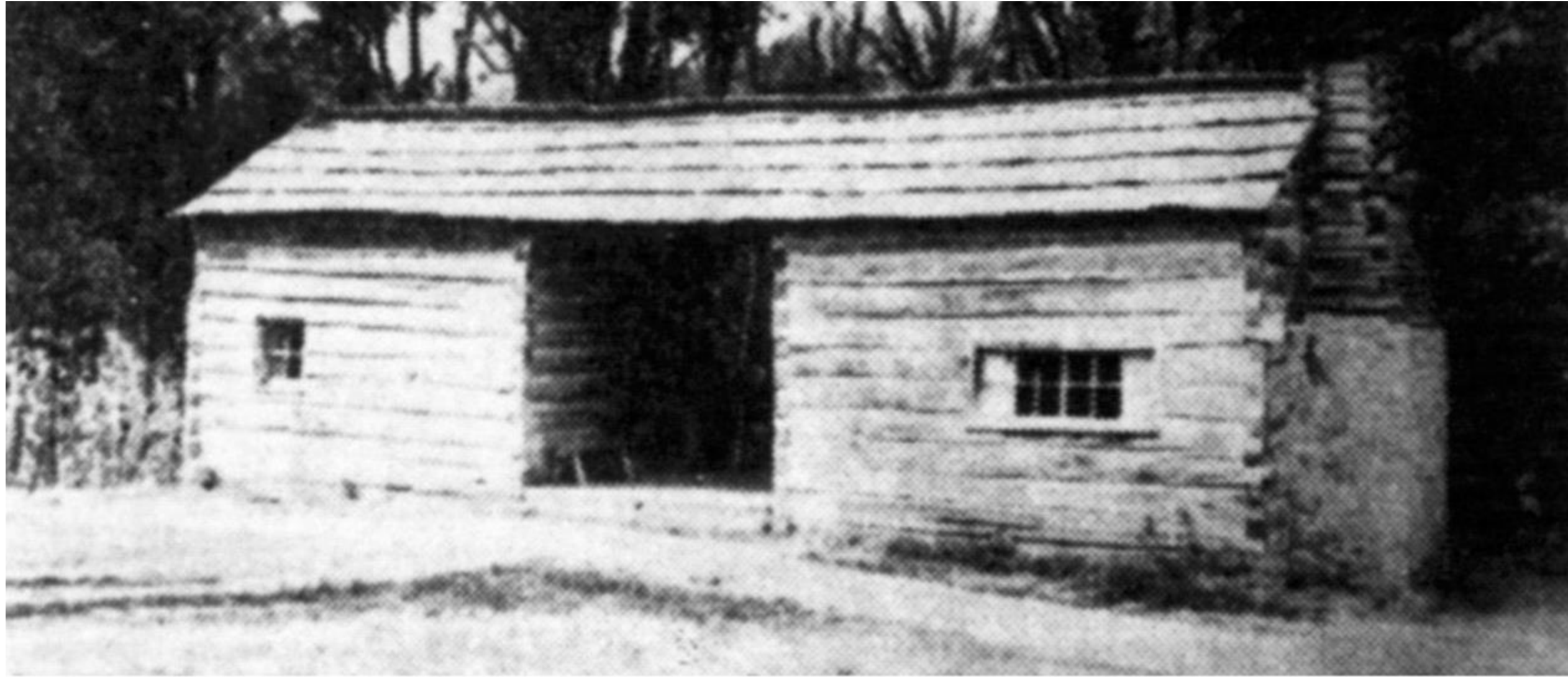
Laboratory EAST. Recent publications.



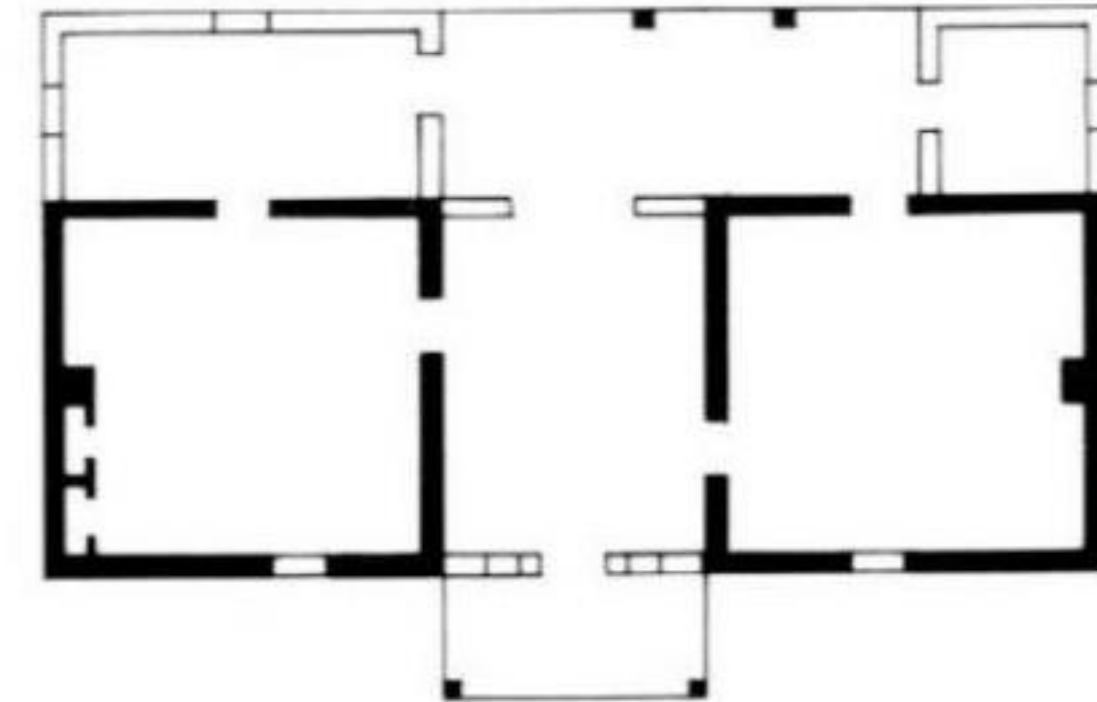
Greenhouse Studies II & III
FS25 + SS26



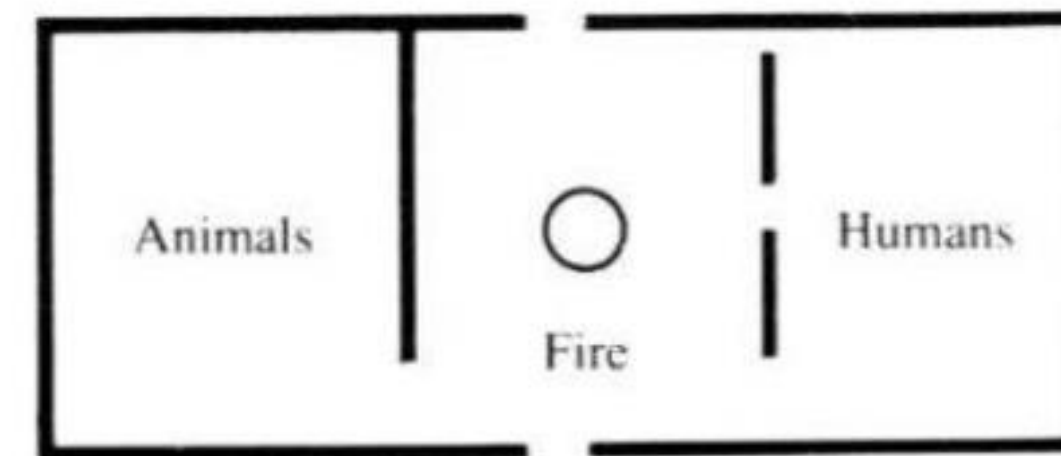
Decommissioned greenhouse, France, 2025



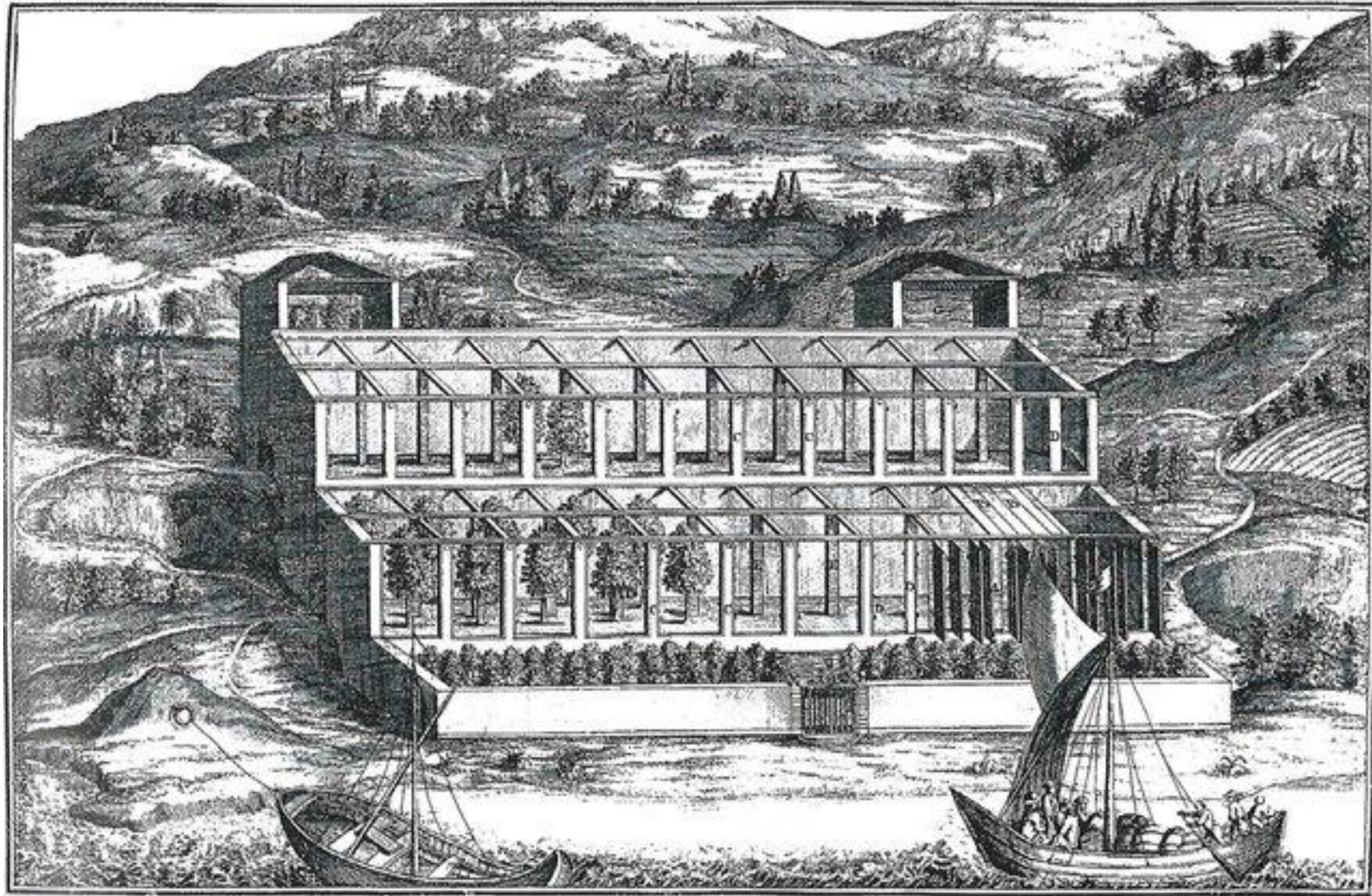
George house, Monroe Co., Fl. c. 1832.



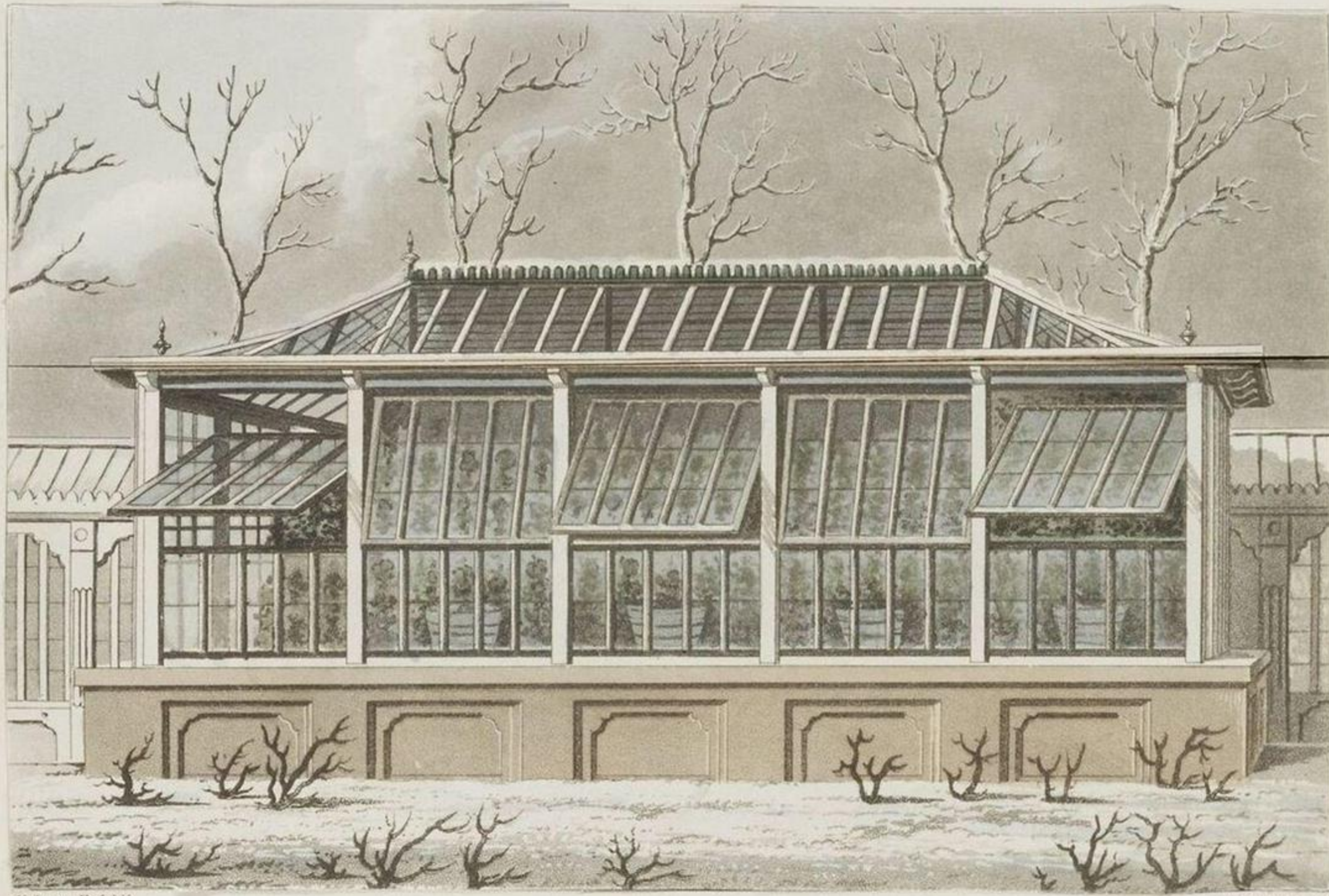
Audrain Co., Mo. 19th C.



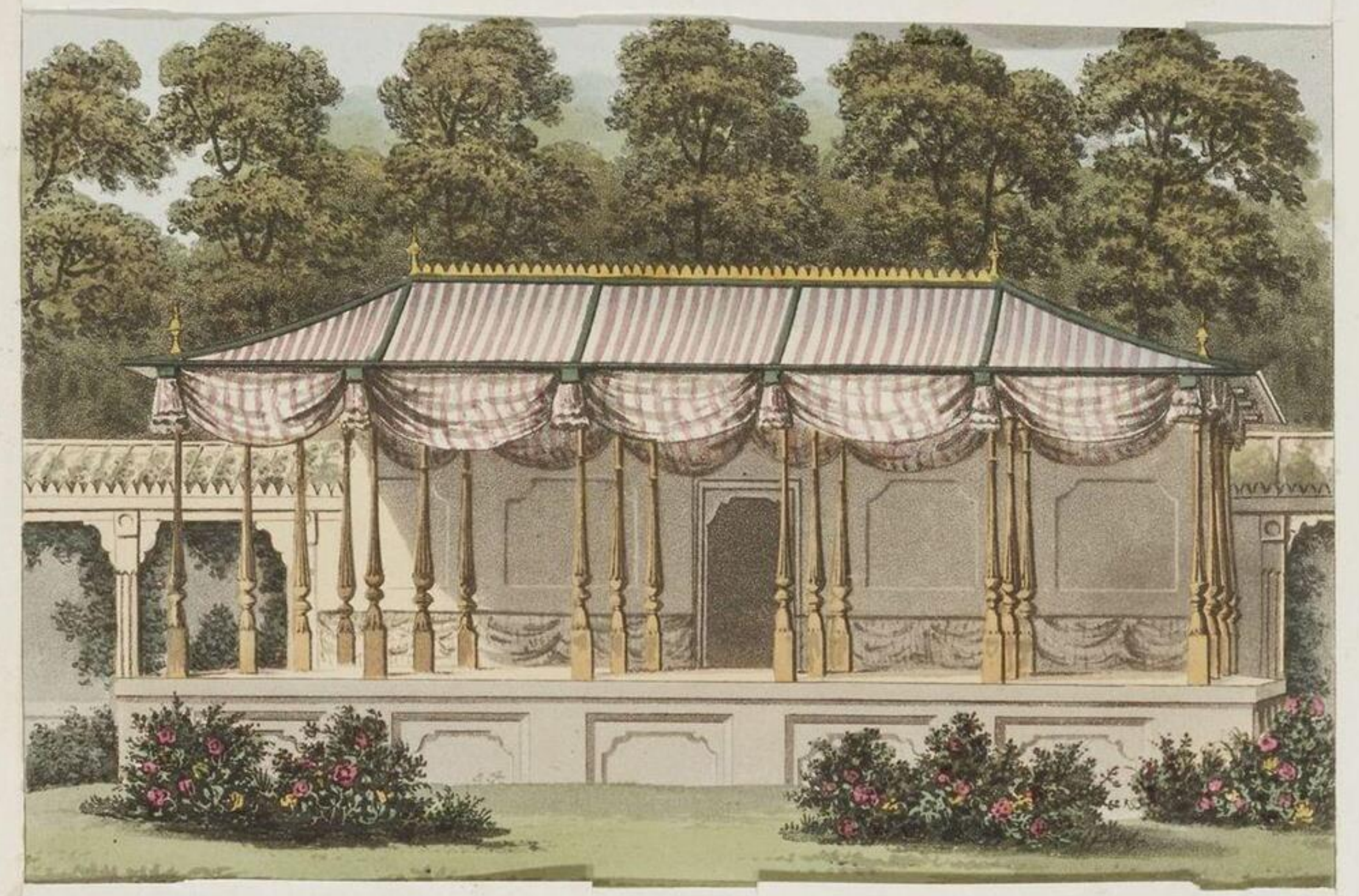
Antecedent: primitive European construction.



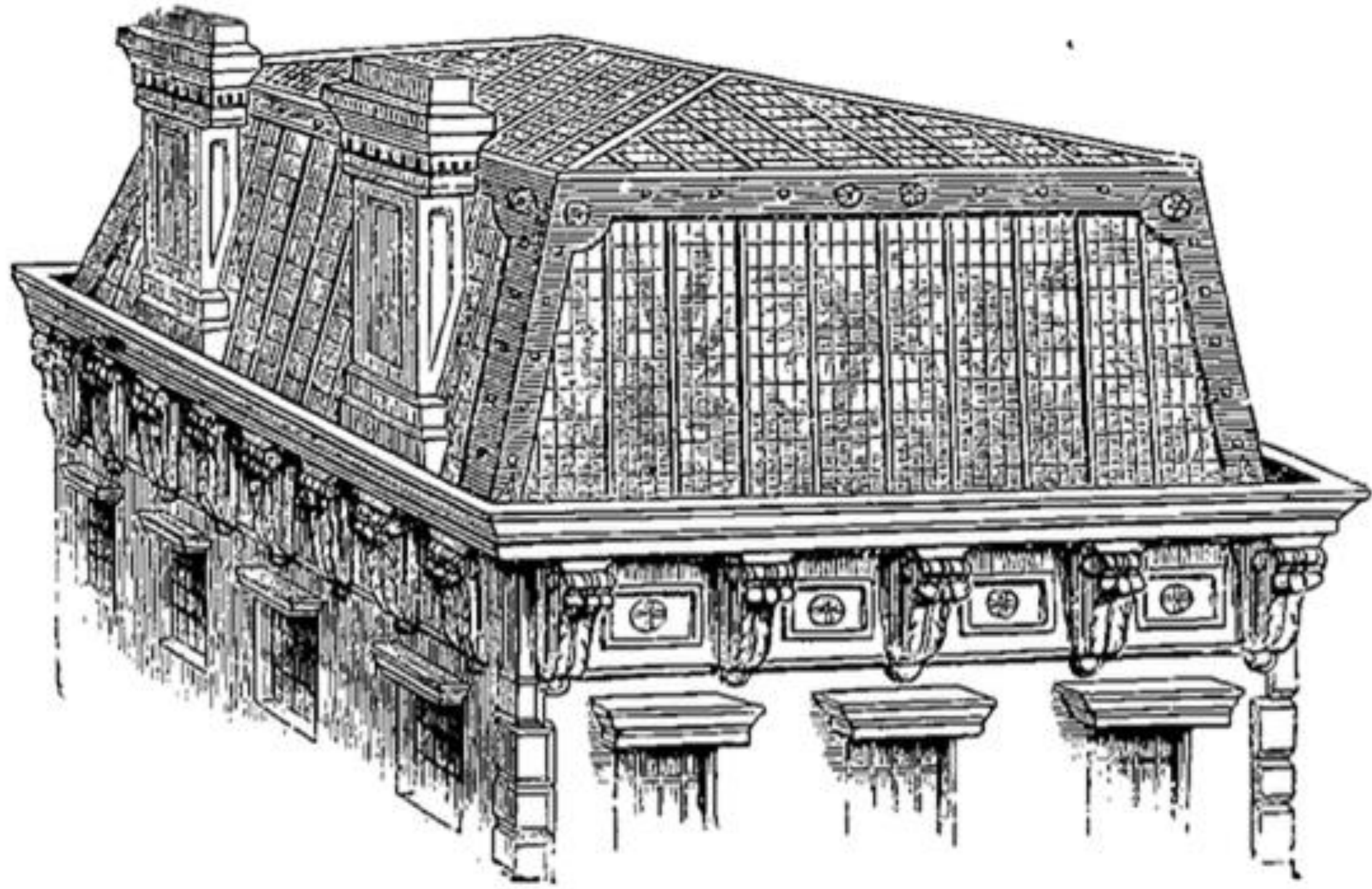
Representation of a lemon house in Lake Garda drawn by the German merchant and botanist J. C. Volkamer.
From *Spectaculum Hortus Hesperidum Salodienses*, 1713



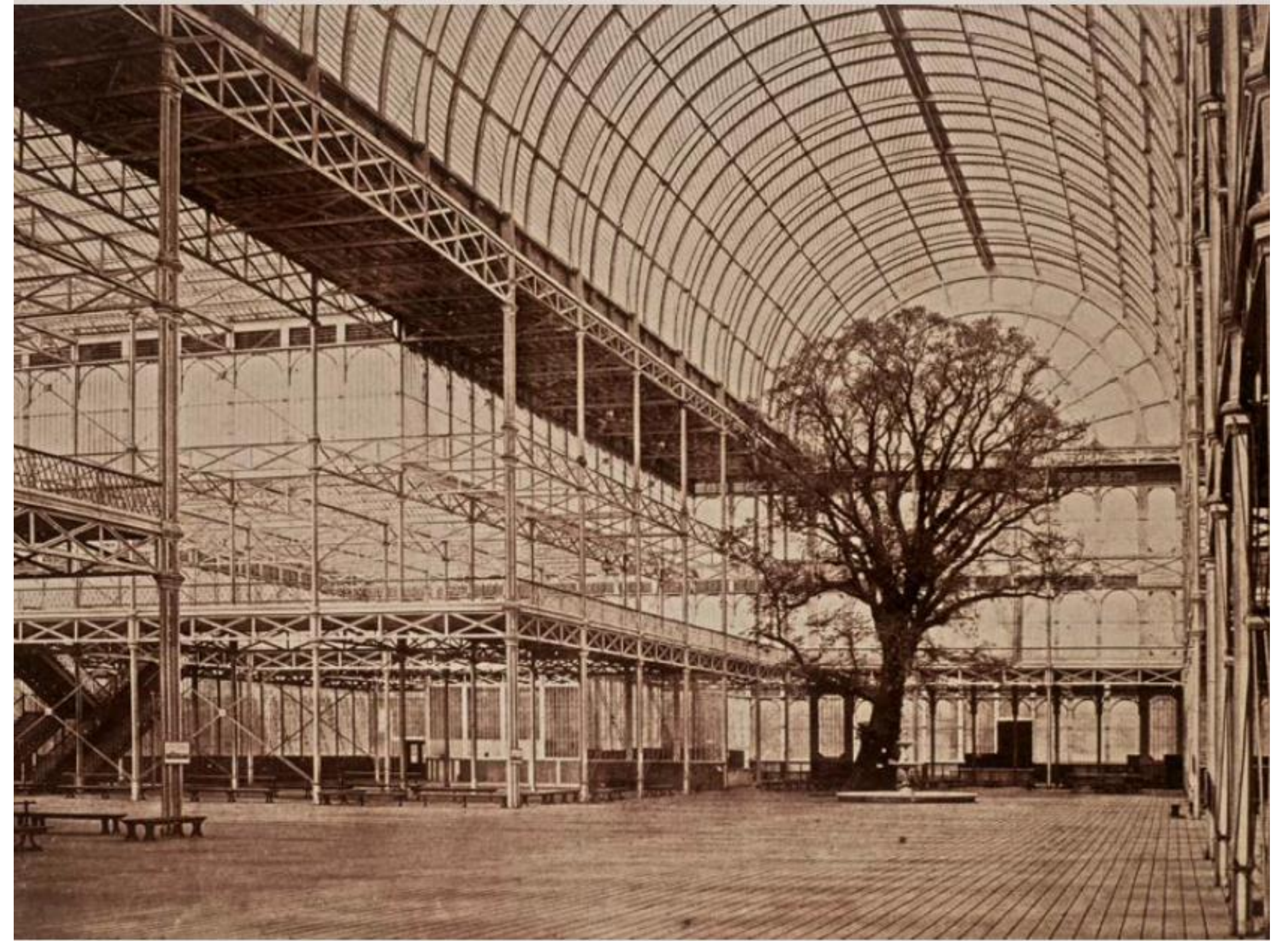
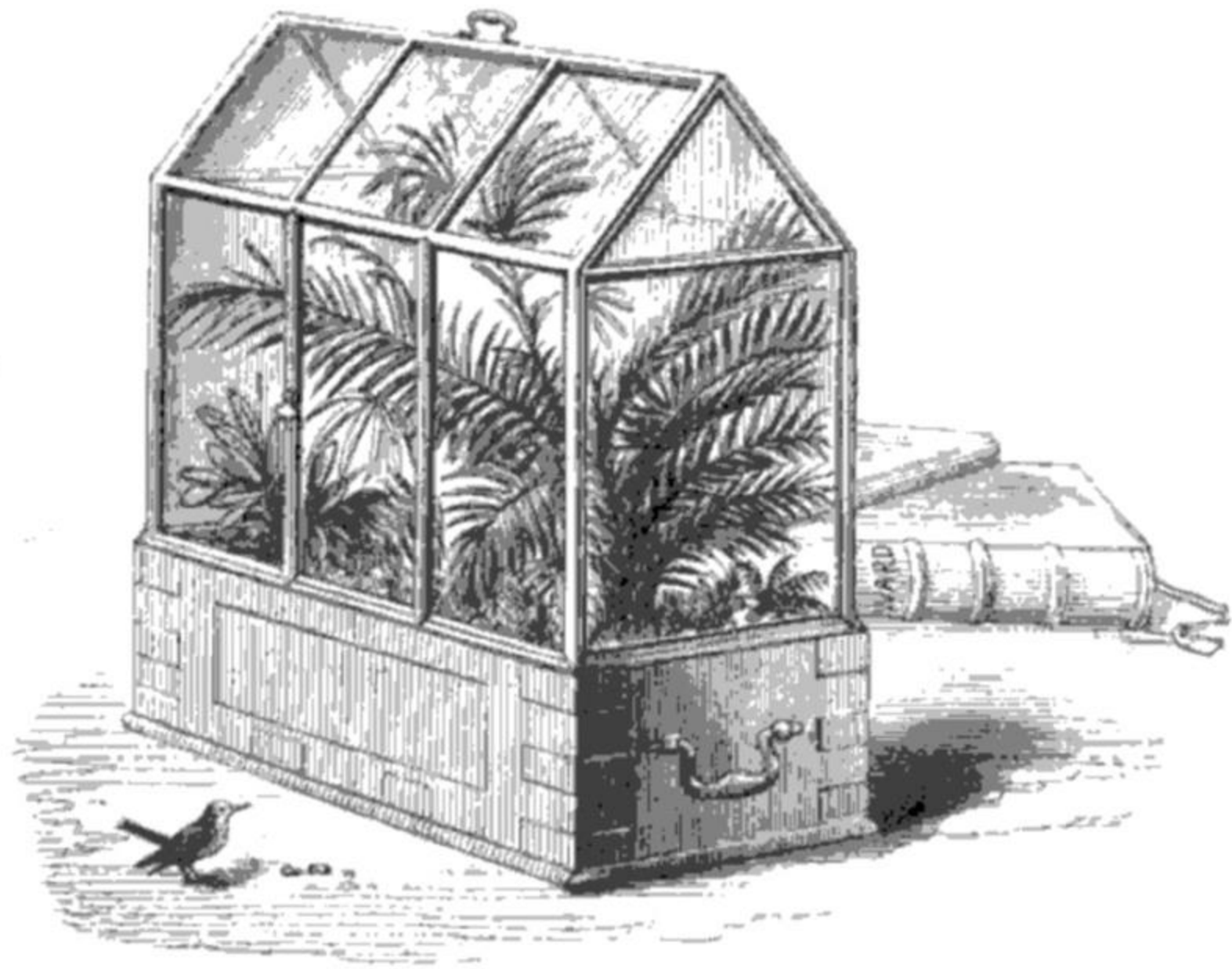
DESIGN for an ORANGERIE.
The frame & Glass removed in Summer. it forms a Chiosk



Design for an Orangerie. From Repton, Humphry. *Designs for the Pavillon at Brighton*. London: J.C. Stadler, 1808



19th-century illustration of a housing block with rooftop winter garden, United States..
House Latapie (1st design) Model, 1992. Lacaton & Vassal.



Decorative wardian case. circa 19th-century.
Crystal Palace Transept, Hyde Park. Photograph, 1972. Turner, Benjamin Brecknell.



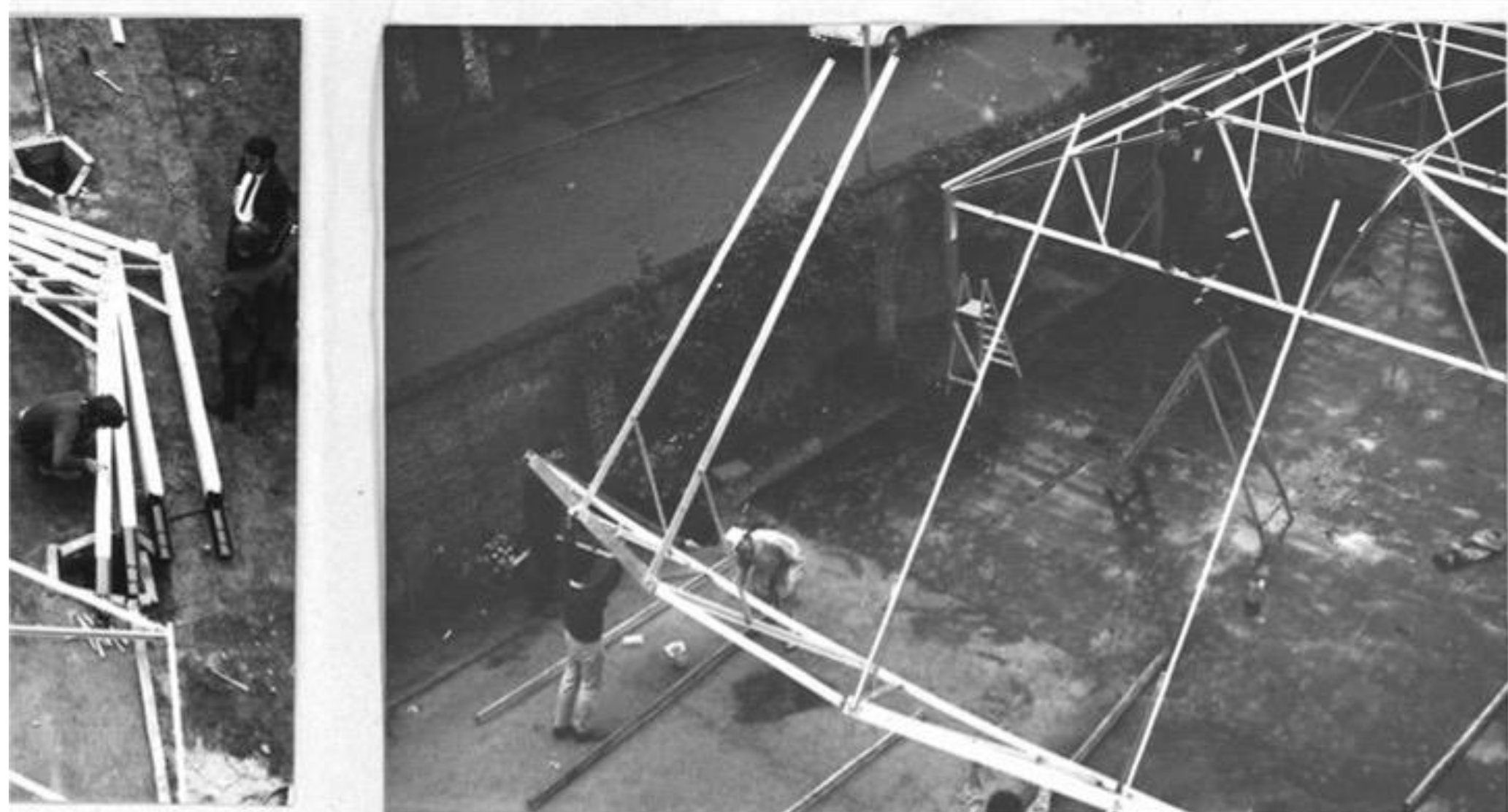
INTERIORS



Humphry Repton and John Adey Repton, *Fragments on the Theory and Practice of Landscape Gardening*. London: T. Bensley and Son, 1816.
Before and after. Transformation of 530 apartments, Grand Parc, Bordeaux. Lacaton & Vassal – Druot – Hutin, 2017



Greenhouse. House and office, Tübingen. Log Id. circa 1976. Exterior and interior view.



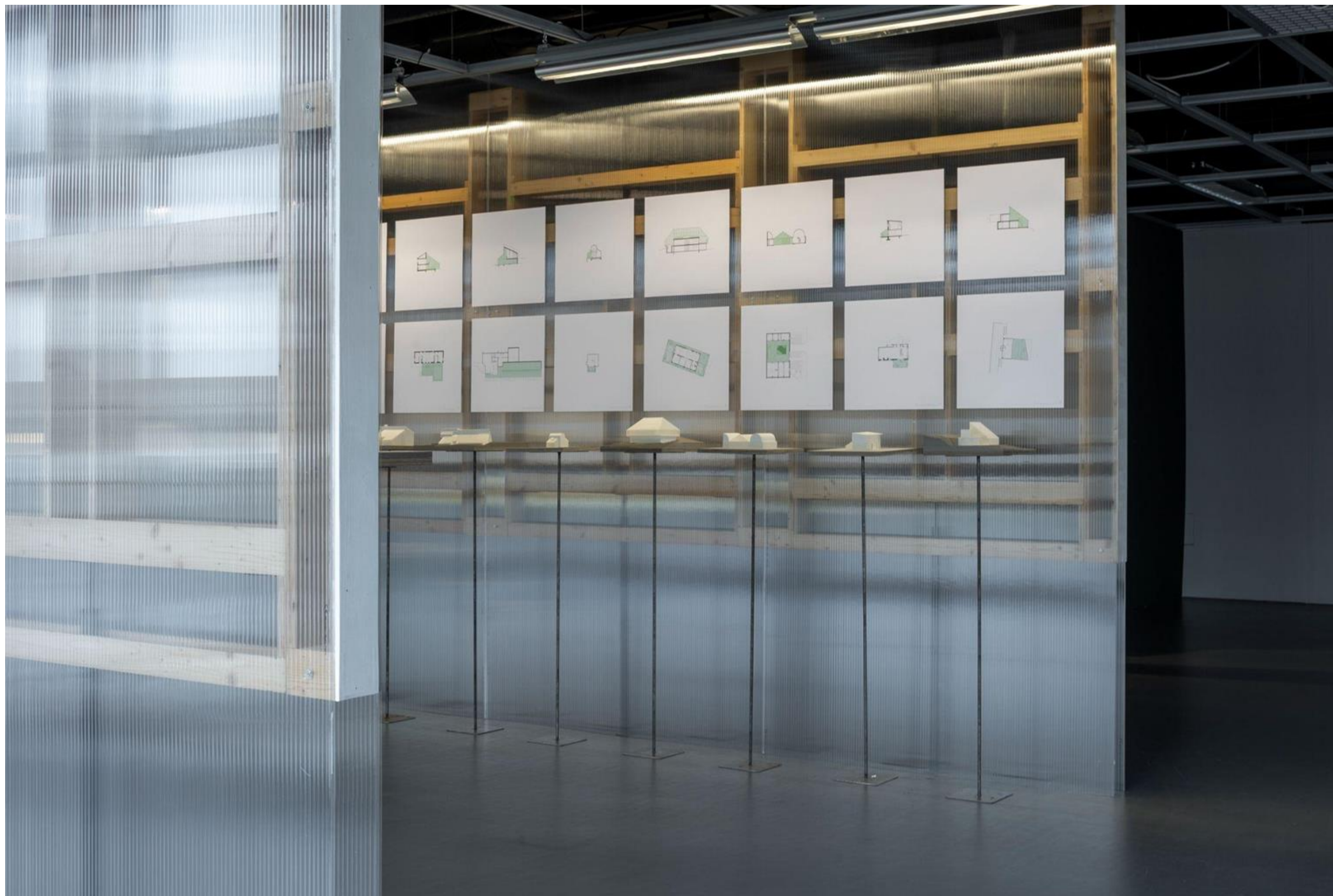
Undergraduates' house 'built without consent'

DAILY TELEGRAPH REPORTER

UNDERGRADUATES building a glass-roofed house as an experiment at Cambridge University were accused yesterday of "colossal cheek." Although the futuristic house, with its own sauna bath and interior garden, is nearly complete the student architects have not received

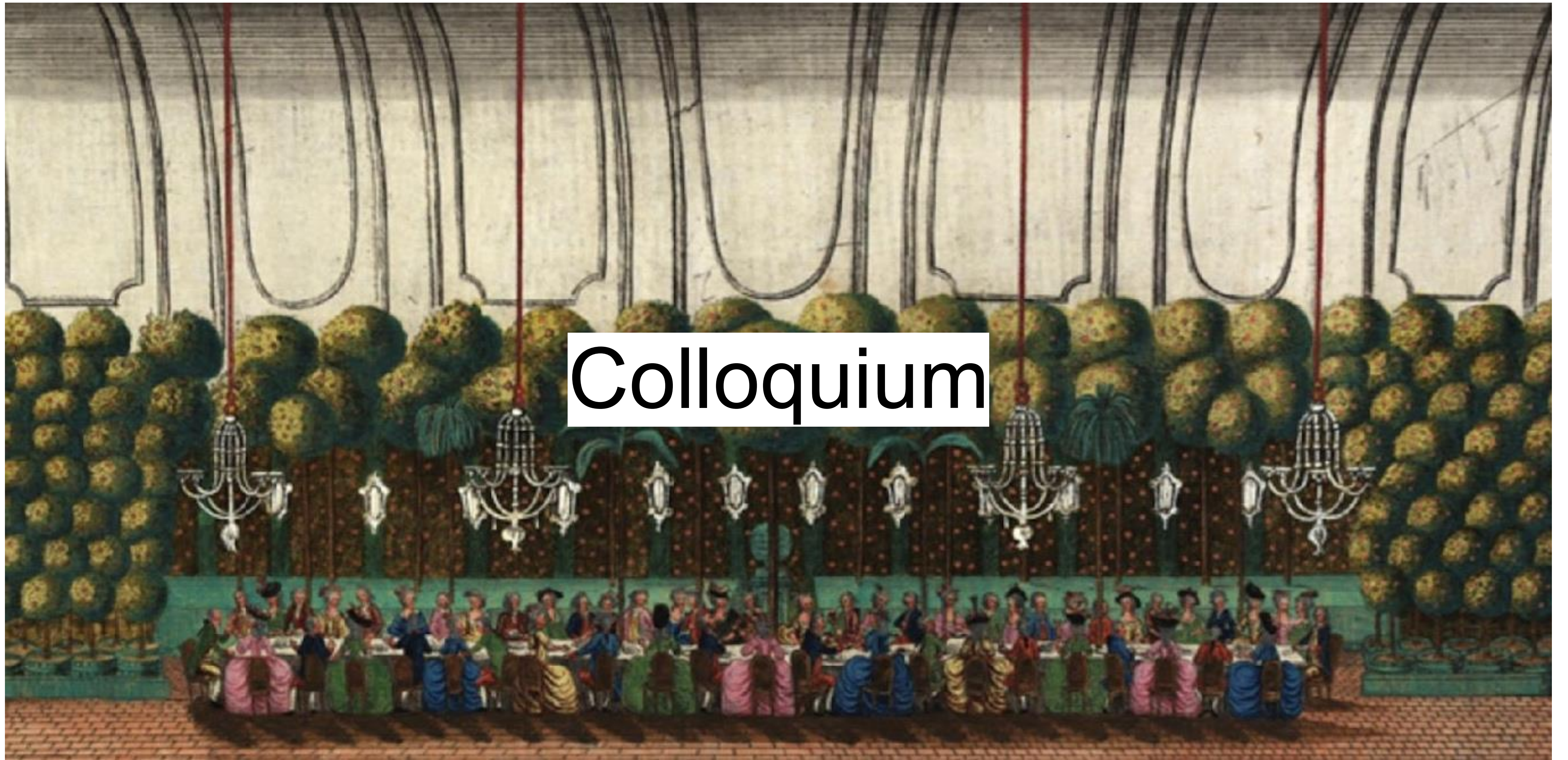


Organisation

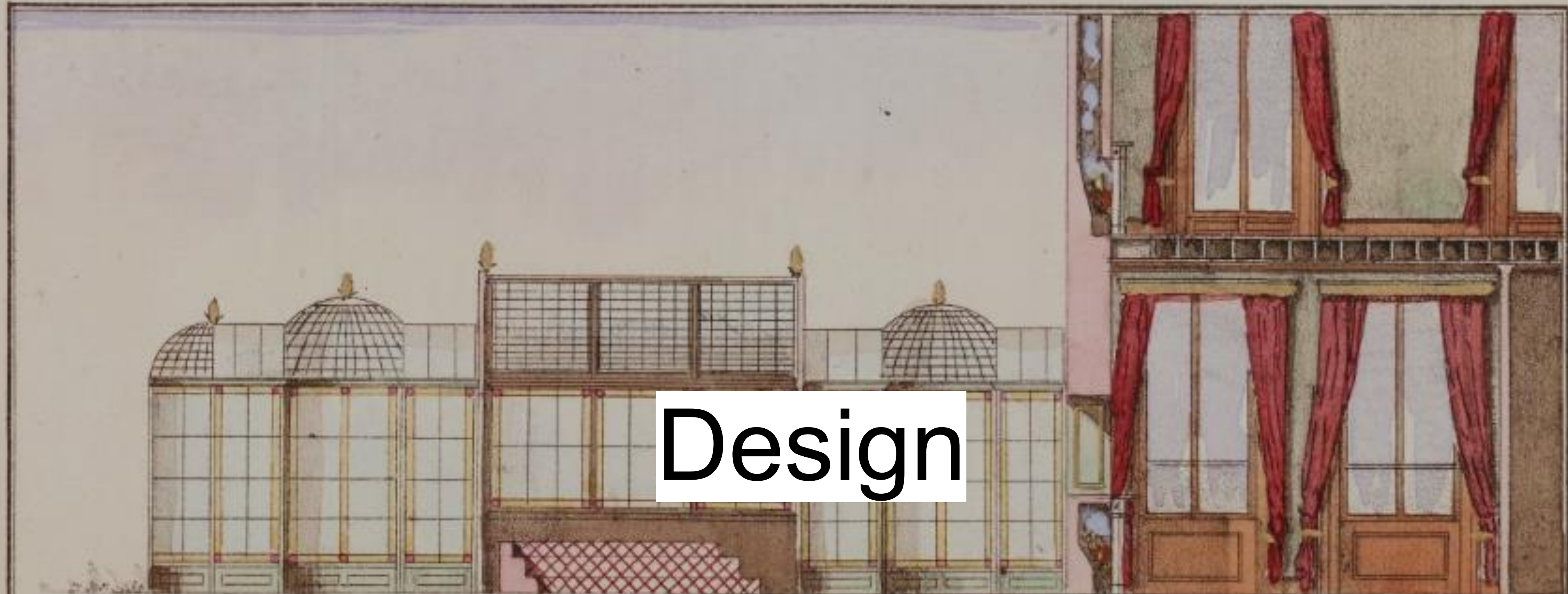


Installation view of Greenhouse Studies, *Sun Shines in Architecture*, Archizoom, Lausanne, 2025. Photograph by Solène Hoffmann.

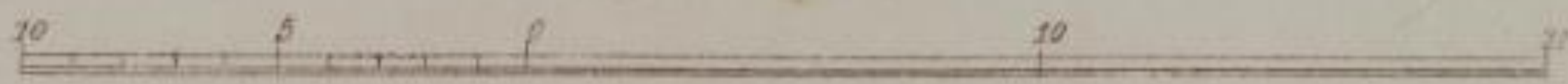
Colloquium



Design



Aviary Conservatory & Flower Stand Covered Way Fire Place Room



W. Butler del.

Joy & Maghe Lith^{rs} to the Queen

SUGGESTION FOR A MORNING OR BREAKFAST ROOM, WITH AN ATTACHED CONSERVATORY AND AVIARY.

COMMUNE DE
CHAVANNES - PRES - RENENS

CPM LA CERISAIE B
CENTRE COMMERCIAL MIGROS

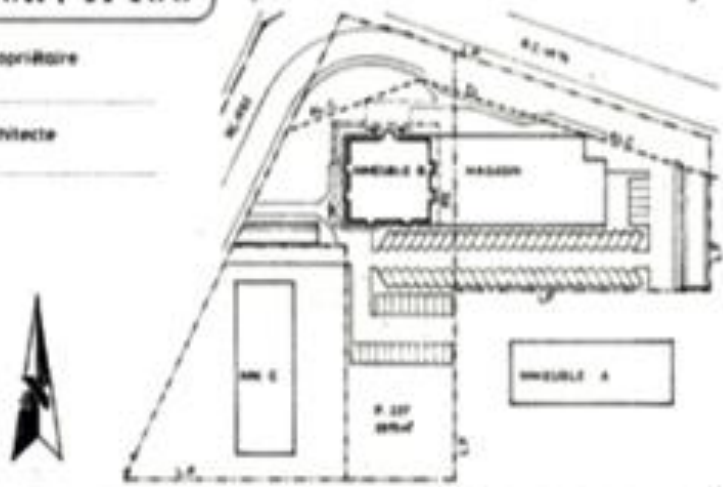
PROJET POUR MISE A L'ENQUETE

HA FACADE NORD

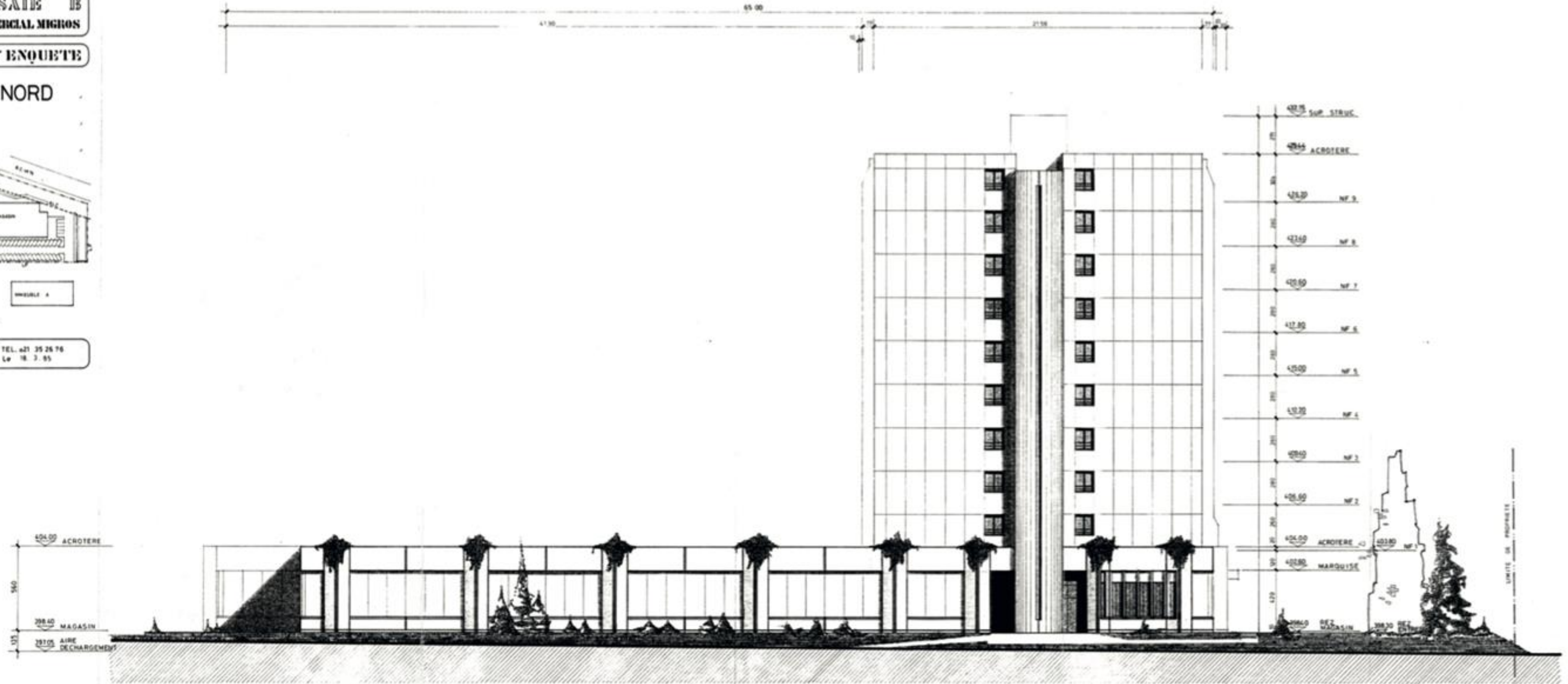
Ech : 1/100

Le Propriétaire

C Architecte



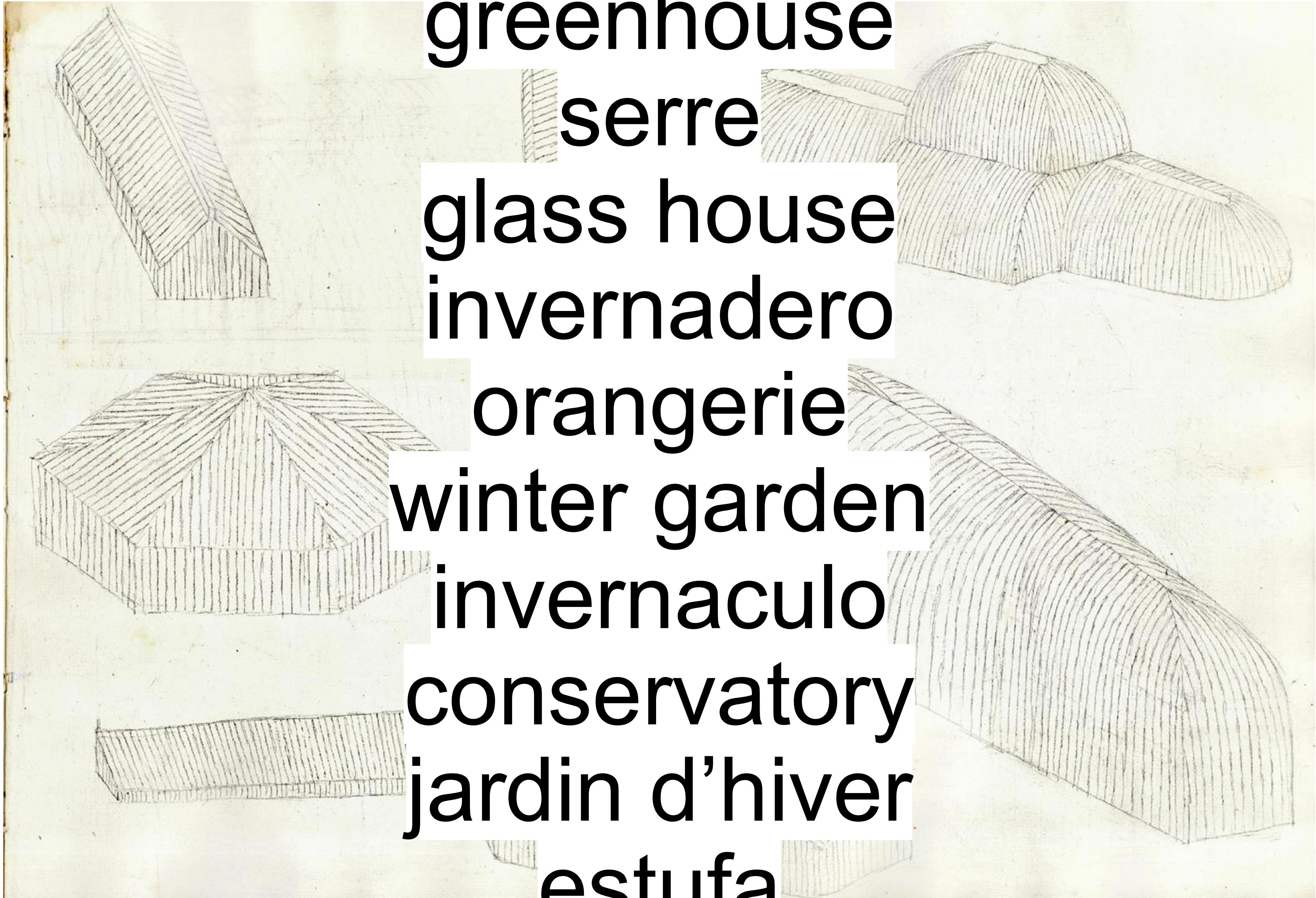
BUREAU ROLAND GONIN ARCHITECTE EPFL SIA TEL. 021 35 26 76
ROUTE DE COSSONAY 192 1220 RENENS Le 18.3.85



FACADE NORD

magasin habitation





greenhouse

serre

glass house

invernadero

orangerie

winter garden

invernaculo

conservatory

jardin d'hiver

estufa



east.laboratory



east@epfl.ch