

Did you say Park?

Exploring health and normality
through territories and imaginaries

ATELIER BA5 & MA1

Fall 2022



The cost of living, DV8 Physical Theatre, 2004
Lloyd Newson

Prof. Paola Viganò

with Noémie Lecoanet, Joanne Nussbaum

SUMMARY (en)

Starting from "Lausanne-Gardens" 2024 project, the design studio proposes a paradigm shift in the notions of urban park and public space. Questioning health, well-being, ecosystems and public space for human and non-human, it explores new narratives for the project of socio-ecological Transition in the City-Territory.

Questioning the evolution of the body in the space, governing the challenges posed by the evolution of a "natural" and public landscape, used by a growing population, will be examined and will become the object of spatial and conceptual investigations at different scales, the city, the landscapes, and the living space. Some specific situations within Lausanne agglomeration will question the idea and form of the contemporary metropolis.

New forms of coexistence - between different species, populations, activities - will then be made possible, building new spaces for lives, based on strategies to open new relationships, connections intensifying, and adapting the inhabited landscape to climate change, as well as the notion of health and body/bodies' well-being that derives from its use.

RESUME (fr)

Partant du projet Lausanne-Jardins 2024, l'atelier propose un changement de paradigme dans la notion de parc urbain et d'espace public. Questionnant les concepts de santé, bien-être, écosystèmes et d'espace public pour les humains et non humains, il explorera le projet de Transition socio-écologique de la ville-territoire.

Questionner l'évolution du corps dans l'espace, gouverner les enjeux posés par l'évolution d'un paysage "naturel" et public, emprunté par une population croissante, et questionner l'idée et la forme de la métropole contemporaine : quelques situations particulières au sein de l'agglomération lausannoise seront interrogées et feront l'objet d'investigations spatiales et conceptuelles à différentes échelles.

De nouvelles formes de coexistence - entre différentes espèces, populations, activités - seront alors rendues possibles, construisant de nouveaux espaces de vie, fondés sur des stratégies d'ouverture, de connexion, de nouvelles relations, intensifiant et adaptant le paysage habité au changement climatique ainsi qu'à une notion de santé et bien-être du corps et des corps qui découlent de son utilisation.

THEORETICAL FRAME

Beyond the opposition center/periphery, the concept of City-Territory allows to read the dispersed contemporary condition as a potential for the construction of a sustainable and innovative urban dimension, where the notion of recycling/reinvestment/territorial care reverses the idea that urbanization is only a wasteful process and considers it, on the contrary, as a "stock" and a reservoir of energy and potential.

In the context of the "Ville-Territoire Alpino-Lémanique", a vast inhabited landscape that stretches along the shores of Lake Geneva, the Workshop will focus on a piece of this metropolis and its landscape: Lausanne. This large cross-border metropolis is currently experiencing strong demographic growth, exerting unprecedented pressure on its ecosystems, particularly about the role they will play in the future and the construction of a new form of habitability.

Here, topographical and hydrographical systems, networks of facilities and infrastructures, agricultural landscapes in transformation, protected areas and parks, heterogeneous residential fabrics have drawn over time specific territorial structures, in some cases weak or discrete, which today need to be profoundly reinterpreted and reimagined. Indeed, the multiple ecosystem services that these structures provide are crucial for the reflection on the ecological and socio-economic transition project.

KEYWORDS

Urban Park, Landscape, City-Landscape, City-Territory, Body, Life, Health, Life Cycles, Ecosystems

LEARNING OUTCOMES

By the end of the course, the student must be able to:

Elaborate a reading of the territory with strong on field appropriation

Assess/Evaluate critically the contemporary urban condition and landscape

Develop scenarios for the socio ecological transition

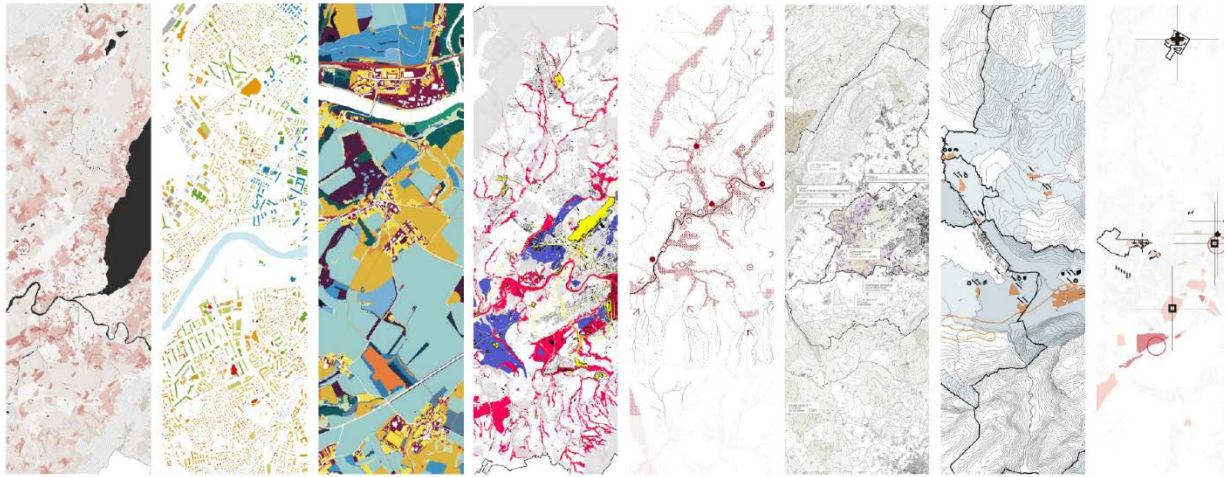
Develop inter-scalar strategies and design explorations

Conceive transcalar prototypes

TEACHING METHODS

The work is organized through a series of "design operations":

- design as descriptive tool: fieldwork, deep reading of territorial figures through mapping and other representations.



- design as conceptual tool: socio-spatial prototypes designed as "concrete descriptions of future situations"



Students will also actively participate in seminars with local experts, researchers, stakeholders.

The Design Studio is led in parallel with the Design Studio Viganò BA5; in some occasions, it will be enriched by lectures and exchange with the Master of Advanced Studies EPFL-ETHZ "Urban and Territorial Design".

EXPECTED STUDENT ACTIVITIES

Projective construction of transcalar urban and landscape projects using videos, maps, architectural drawings, and models. Understanding and interpretation of the proposed bibliography through short presentations.

ASSESSMENT METHODS

The materials produced by the student will be the basis of a presentation evaluated considering:

- the student's contribution to teamwork and individual
- the quality of the different representations and of the project
- the capacity to place the work in a broader context
- the deepening of the proposed literature

BIBLIOGRAPHY

Provided at the beginning of the semester