

# Tali<sup>™</sup> Image-Based Cytometer

Catalog Number T10796

Publication Part Number MAN0003624

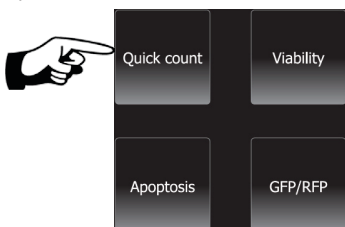
Revision Date 24 March 2011

Instructions for using the Tali<sup>™</sup> Image-Based Cytometer are described below.

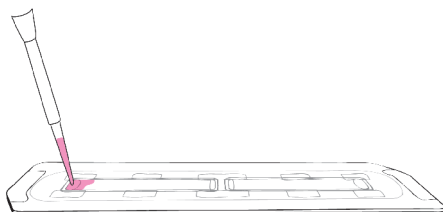
For detailed instructions, refer to the manual supplied with the product or download the manual from [www.invitrogen.com/tali](http://www.invitrogen.com/tali).

## Using the Tali<sup>™</sup> Image-Based Cytometer

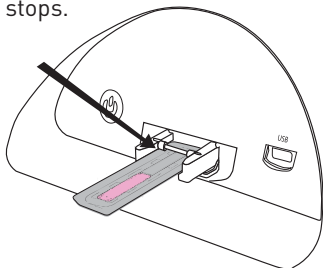
- 1** Choose the assay you wish to perform.



- 2** Load 25  $\mu$ L of the sample into the slide.



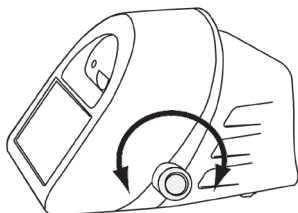
- 3** Insert the slide, sample side facing you, into the instrument until it stops.



- 4** Touch **Press** to insert new sample; the slide will be automatically pulled into the instrument.

**Press to insert new sample**

- 5** Focus the image (see reverse for representative images).



- 6** Touch **Press** to run sample; the slide will automatically eject when the run is complete.

**Press to run sample**

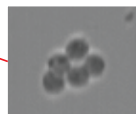
### Intended Use

For research use only. Not intended for any animal or human therapeutic or diagnostic use.

# Focusing the Tali™ Image-Based Cytometer

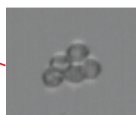
## Correctly focused image

- Uniform dark color throughout cell
- Bright halo around each cell



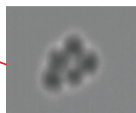
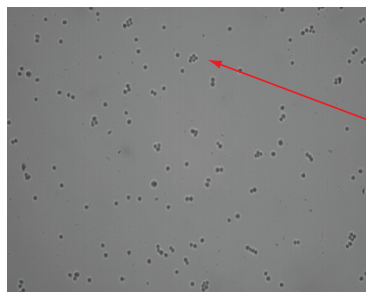
## Incorrect – cells may be overcounted

- Bright center
- Dark perimeter



## Incorrect – cells may be undercounted

- Fuzzy transition between the background and the edges of the cells
- Undefined cell perimeter



## Optics of the Tali™ Image-Based Cytometer

<b>Optics:</b>	3 channels (bright field, green fluorescence, red fluorescence)
<b>Excitation:</b>	Green channel LED: $458 \pm 20$ nm Red channel LED: $530 \pm 20$ nm
<b>Filters:</b>	Green channel: 466/40 EX, 495 LP Di, 525/50 EM Red channel: 543/22 EX, 580 LP Di, 585 LP EM
<b>Camera:</b>	1.3 Mega pixels, 4X objective, 4X or 16X digital zoom

©2011 Life Technologies Corporation. All rights reserved. The trademarks mentioned herein are the property of Life Technologies Corporation or their respective owners.

### Headquarters

5791 Van Allen Way | Carlsbad, CA 92008 USA

Phone +1 760 603 7200 | Toll Free in USA 800 955 6288

For support visit [www.invitrogen.com/support](http://www.invitrogen.com/support) or email [techsupport@invitrogen.com](mailto:techsupport@invitrogen.com)

[www.lifetechnologies.com](http://www.lifetechnologies.com)

