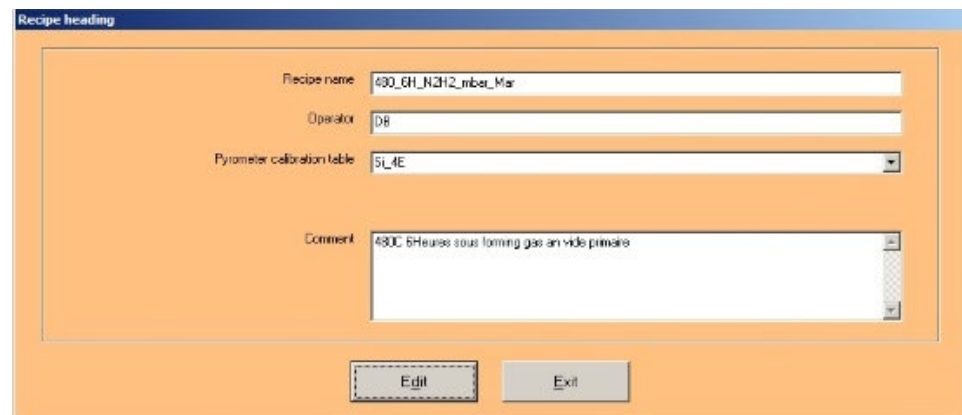
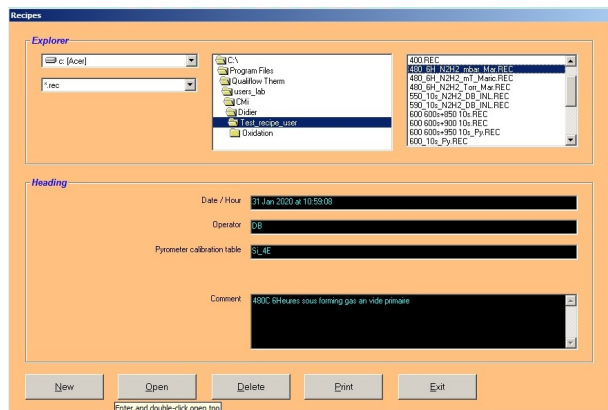


How to create/modify a recipe (1)

- 1) First, click on **Recipe** in the main menu
- 2) Find your directory : Qualiflow_Therm / Users_lab / Your_lab / Your_name
- 3) Open the recipe directory and select a recipe
- 4) Complete the page **Recipe Headedness** with the up to date Pyrometer table Si_4E and comments if needed
- 5) Press **Edit**, the first step of recipe appears (see next page).



How to create/modify a recipe (2)

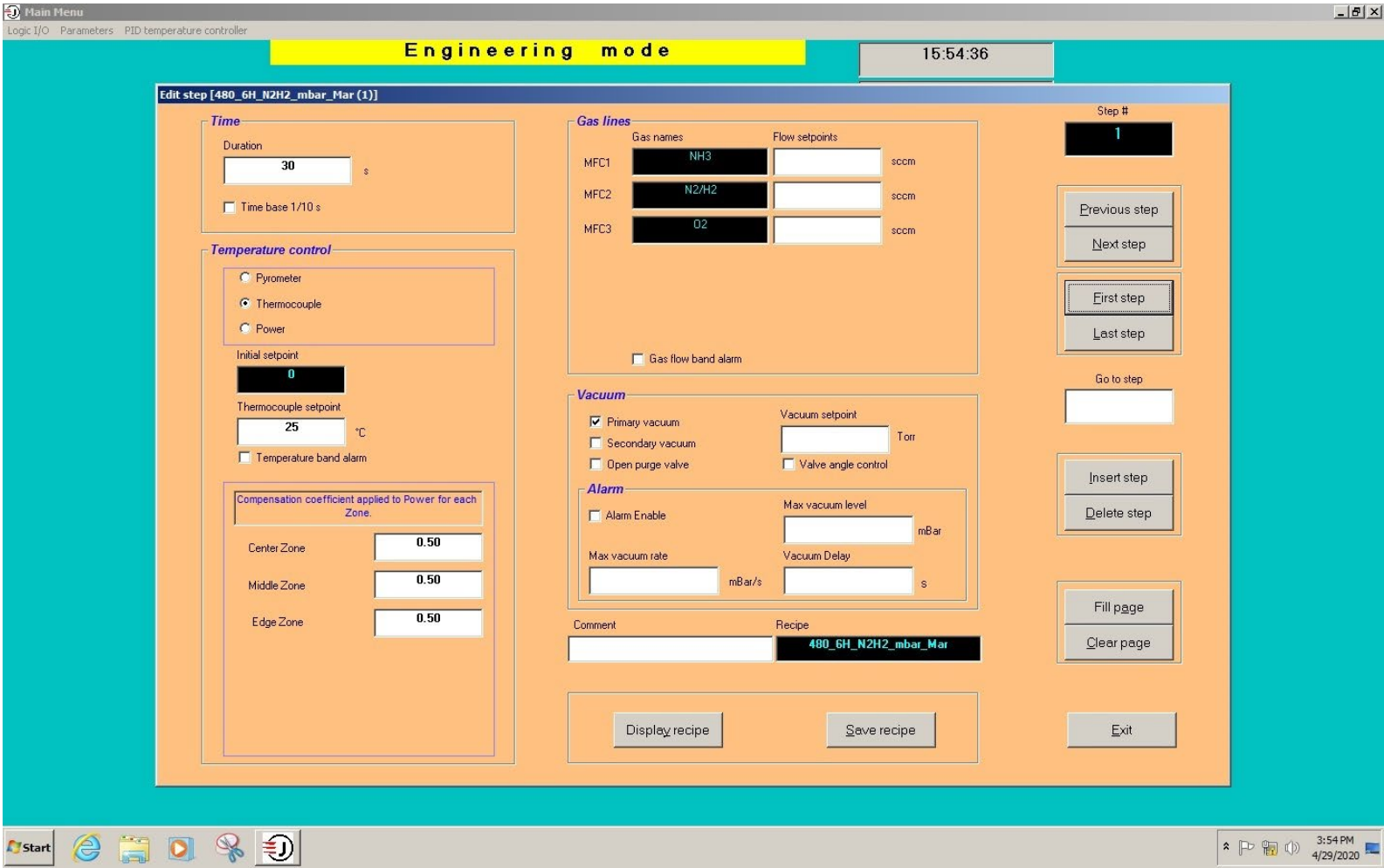
6) The page **Edit Step (recipe(1))** is the first step of your recipe. Enter the process parameters requested (see next page) and click on **Next Step** for the second step etc...

- . Duration (**Time**)
- . MFC1 2 3 flow (**Gas line**) – 50 to 2000 sccm
- . Select the temperature control mode : TC or pyrometer (**Temperature control**)
- . Set the temperature of the step (**Temperature control**)
- . Set the atmosphere : (**Vacuum**)

Once all steps are completed, click on **Save Recipe**:

You can navigate from one step to the other, add steps, remove steps etc ... with the menu on the right of the window.

How to create/modify a recipe (3)



How to create/modify a recipe (4)

NB :

- For the parameters « **Compensation of the power for each zone** »
 - 0.5 up to 500 °C
 - 0.9 up to 1200 °C
- To activate the turbo pump (secondary vacuum), you have to first ask for a primary vacuum during 120 s and then with the next step, ask for a secondary vacuum for 120 s minimum to be able to switch on the turbo pump.
- To fill the chamber with N₂, you have to select **Open purge valve**. The flow is 10 l/min.
- During the ramp up and the annealing steps, it's recommended to switch off the N₂ (**Open purge valve**) to be in static mode. This makes the temperature control easier