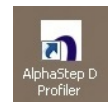


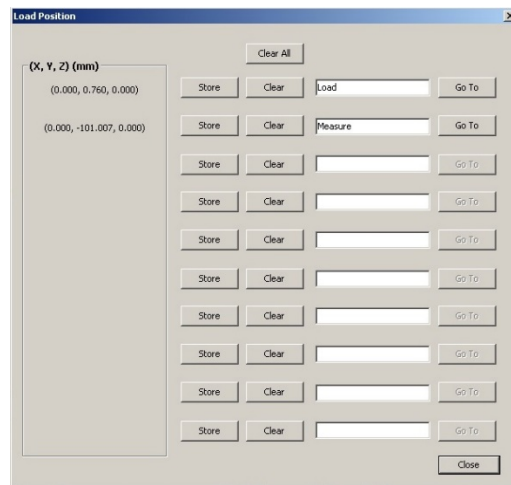
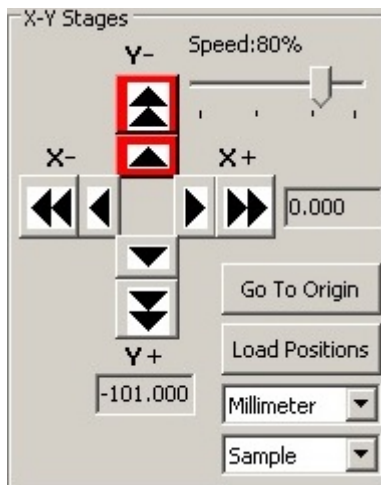
KLA-Tencor D600 - MECHANICAL PROFILOMETER

Quick measurement

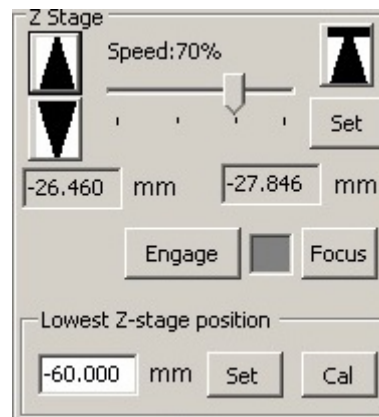
How to do a measurement



1. Open the software “AlphaStep D Profiler”,
2. Put your sample on the chuck in the center part.
3. Click on “**Load position**” in the menu XY Stages and then “**Go to**” corresponding to the line Measure



4. In the Z stage menu, click on the down arrow to move down the tip until you see the surface of your sample and adjust the position of the tip versus your sample with XY arrows of the menu XY Stage.



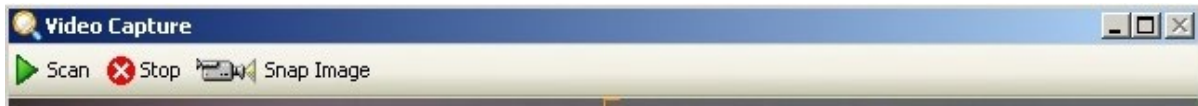
5. Select the measurement recipe in the menu: File/load recipe. Once the recipe is loaded, you can modify the parameters of the measurement:

Scan length
Range

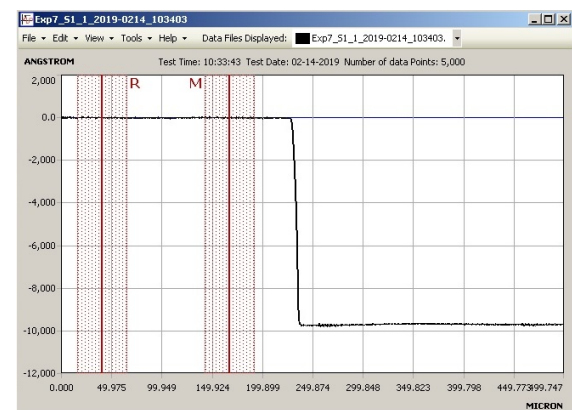
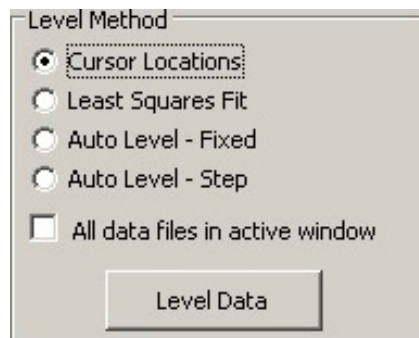
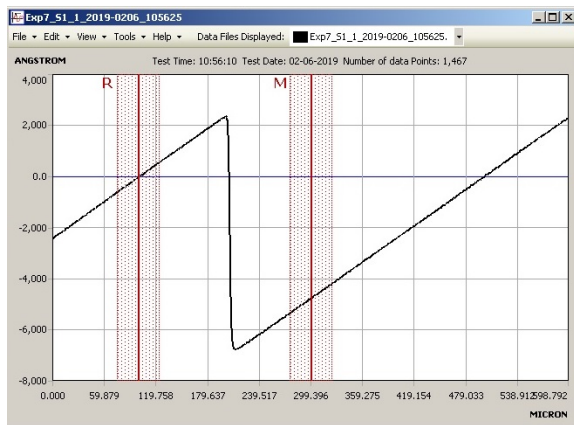
Scan speed
Profile

Stylus force

6. Click on “scan” to start the measurement



7. Once the measurement is done, a new window appears with the raw profile of your sample and two cursors R and M. To make it flat, you have to move them on a part of the profile that you know that it's flat and then in the menu Level Method, click on “Cursor locations”



8. To unload the sample, click on “Control panel” and then on “Load position” in the menu XY stage and then “go to” for the line load.