

Install L-edit on a windows box at CMI

Version of 2017-11-01. Get the latest one at cmi.epfl.ch/photo/files/design/ledit.install.pdf

1. Introduction

This manual explains you how to install the layout editor called “L-Edit” by Tanner EDA tools (now Mentor Graphics Corporation) in the context of the CMI.



It is excessively detailed, so that you can get on your feet without any assistance.

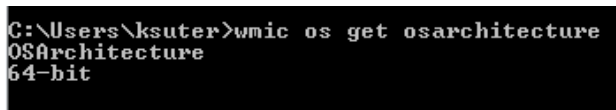
2. Know your windows box's OS

There is a 32bit and a 64bit installer. What does your box need?

type: WindowsKey-R, type in: cmd



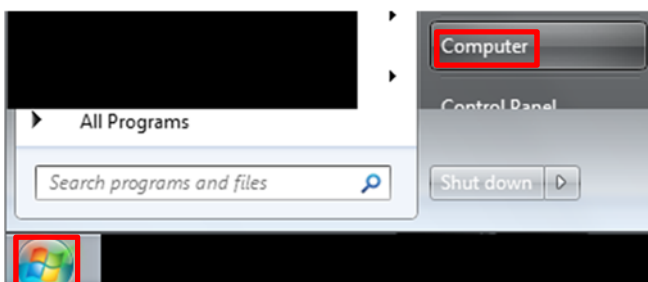
type in terminal: wmic os get osarchitecture



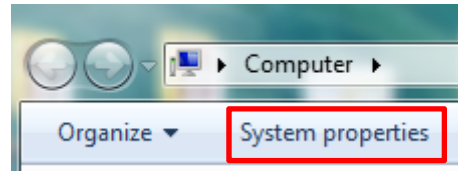
Here the answer is “64-bit” (to state the obvious).

Prefer to use GUI and a mouse? Here is a sequence for windows 7. Each windows version, has a slightly different path. Good luck.

Click “**windows thing**” (lower left), then **Computer**

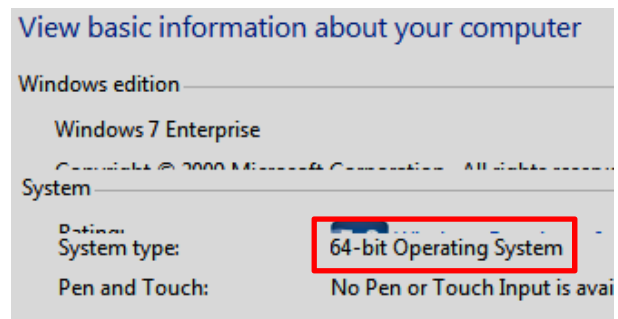


This opens the following window



Click on the tab “System Properties”

Find your 32 or 64bit operating system type:



The answer is again “64-bit” (to state the obvious).

3. Install the software L-Edit

The software is located at

[\\sti1files\cmi-transfert\L-Edit\current.lnk](http://sti1files\cmi-transfert\L-Edit\current.lnk)

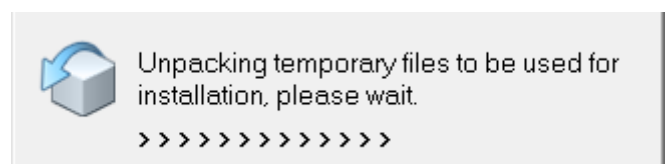
[If windows goes beserk while authenticating [\\sti1files](http://sti1files), prefix your login with the Microsoft domain, i.e. login with “\intranet\myGasparLogin”.]

Above link is for windows explorer, some protocol handlers get it, all others cut above line, paste into address line of windows explorer (windowsKey-E). The “current” link (ms-speak: shortcuts) points to the latest version (changes 4 times/year).

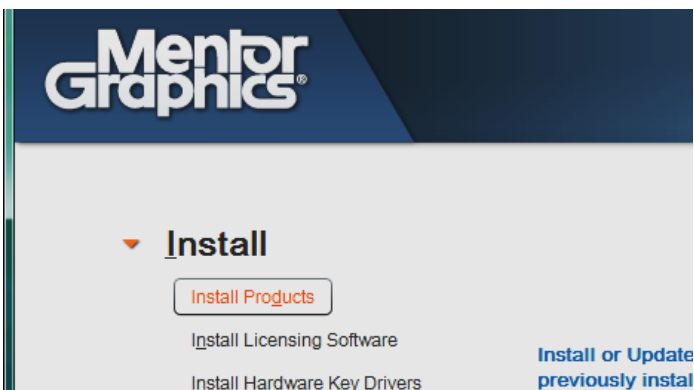
Start the installation binary for your operating system type. Above example was 64bit, therefore:

TannerTools-v2016.2_Update5-Win64.exe

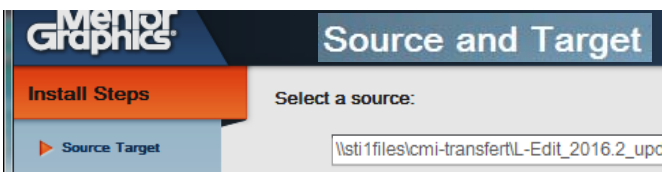
A couple of splash screens later:



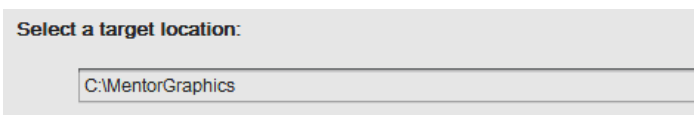
Then you get a window that talks installation:



Click on **"Install Products"**. You arrive at the **"source and target"** window.

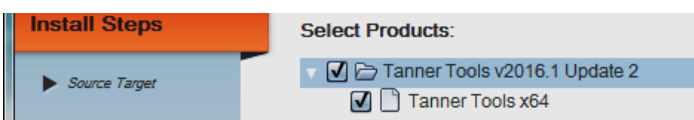


Do not change the source, (version dependent:
\\sti1files\cmi-transfert\LEdit\
tannertools_2016.2_update5\
TannerTools-v2016.2_Update5-Win64.exe)



Change or do not **"target location"**, default is **"C:\MentorGraphics"**.

"Next" brings you to **"product selection"** window, do not change **"selected products"**, in any case it will install all, all as in "S-Edit, T-Spice, Waveform Viewer, L-Edit, Verify, LVS". You need "L-Edit", and we will get rid of the rest after installation.

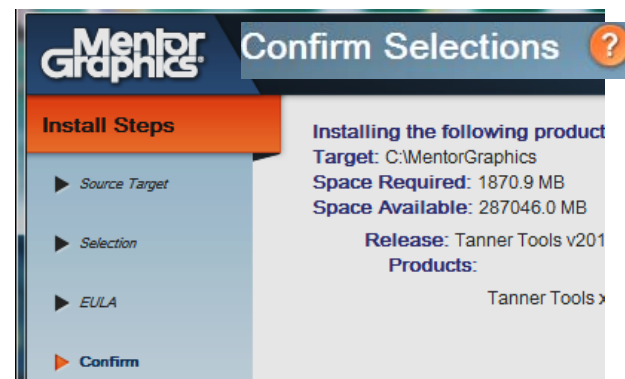


"Next" arrives at **"EULA"**. You never read them. Don't start now. Ignore. Click **"Agree"**.

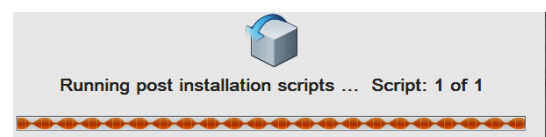
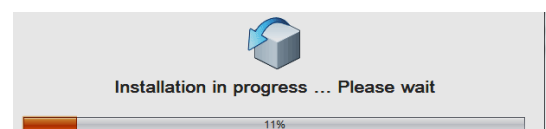


N.B.: The main purpose of all these (EULA) agreements is for companies to shield themselves from legal action. They don't want to accept the default law that's been established by governments, so instead they claim additional safeguards against lawsuits. It would be impossible for companies to negotiate individualized contracts with every single user. Thus they create these blanket agreements. [adapted from http://www.slate.com/articles/technology/technology/2014/11/end_user_license_agreements_does_it_matter_that_we_dont_read_the_fine_print.html]

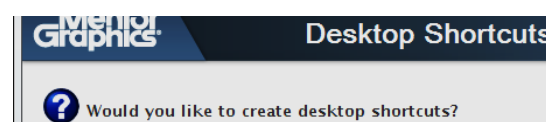
Then arrive at the **"confirm selections"** window, and click **"Install"**.



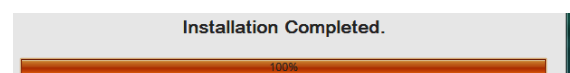
Then a ballet of scripts ensues. How much engineering can go into a progress bar?



"No" to the question Mentor forgot to include under configuration (may be behind windows):



Finally:

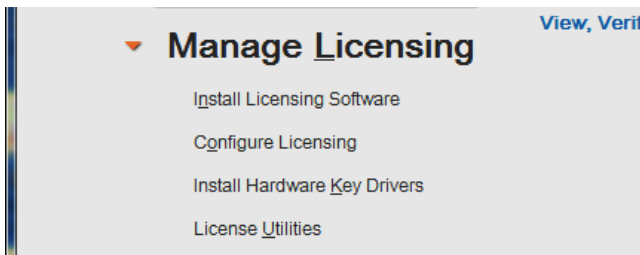


It is over, it is done: click **"Done"**. Wait a minute. Licensing?

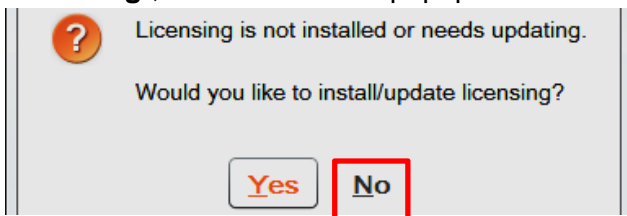
4. Licensing

Well it is not done. Show the tool where CMI hides the license file, no automatic discovery, yet.

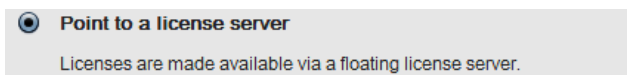
Either continue in the open window, or restart above install software, i.e. **TannerTools-v2016.2_Update4-Win64.exe**, go this time to “Manage Licensing”:



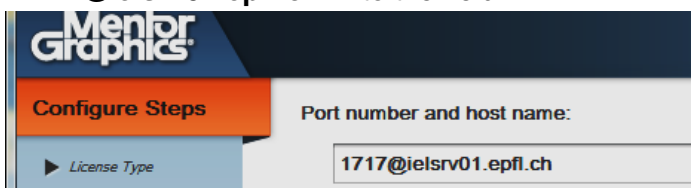
In **Manage licensing**, go to “**Configure Licensing**”, click “No” on the popup:



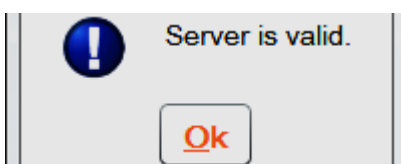
Then select (o) point to a license server, “Next”



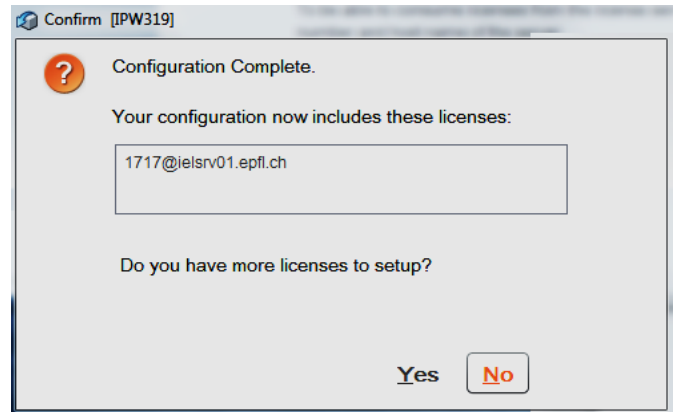
Enter the port number and hostname: “1717@ielsrv01.epfl.ch” into the field:



Hit “test” and “ok” the popup.



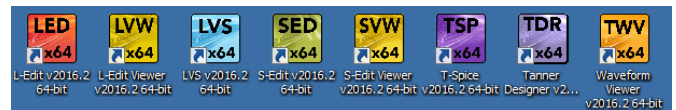
Tool is happy. Hit next



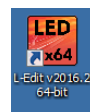
Say **No** to more licenses to set up


Exit the installation software.

You desktop is probably littered with shortcuts:

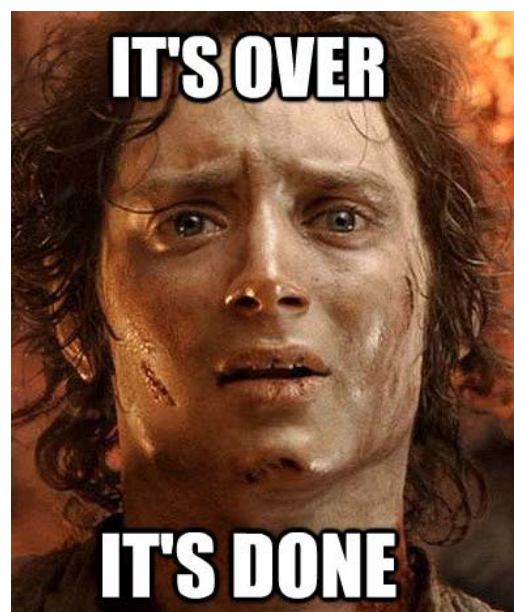


Delete, except if you want a shortcut to L-Edit



Start the software, with the  icon.
Enjoy!

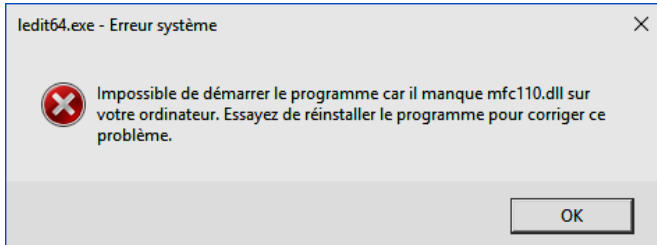
Now it is over, it is done.



5. Known Issue: mfc110.dll

(added 2017-01-10.)

You get following message when starting L-Edit:



The message wants to tell you that **mfc110.dll** is missing, which is nerdspeak for Microsoft Foundation Class library, i.e. **"MFC 11.0.61030"**.

Mentor expects this to be installed on your machine. Check under software for **"Microsoft Visual C++ 2012 update 4 Redistributable (x64 or x86)"**. If it is not there, then install it. You should get it directly from Microsoft, as otherwise you might pick up some malware payload. There is a version in your L-Edit folder too, but this might not always work. Key is **2012 Update 4**.

`vc_redist_visual_c++_2012_update_4_mfc_11.0.61030.x64.exe`

After installation of this VCRedist..., your L-Edit should startup with no problems.

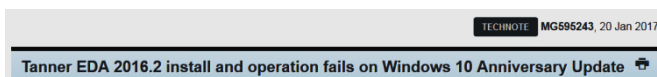
6. Known Issue: mfc140.dll

(added 2017-02-21.)

You start L-Edit, and you get this message:

ledit64.exe - System Error
(X) The program can't start because mfc140.dll is missing from your computer

Mentor says:



SYMPTOMS

If you attempt to install Tanner EDA tools on a Windows 10 system that is up-to-date (as of 2016.Sep.28, presumably with the "Windows 10 Anniversary Update"), The "self install script" has a failure:

ERROR:

Title: Script Failure [IPW213]
Message: The script C:\MentorGraphics_prescript\IXN\Tanner EDA\Tanner Tools v2016.2\64\QuitNotify.ixn\Release64\QuitNotify.ixn\InstallScripts\quitnotify.exe failed. System Error Code -1,073,741,515 The program can't start because hs is missing from your computer. Try reinstalling the program to fix this problem.

Also, if you try to launch L-Edit, errors regarding the Visual C++ DLLs will occur, such as:

ledit64.exe - System Error
(X) The program can't start because mfc140.dll is missing from your computer.

TECHNOTE ID

MG595243

TECHNOTE TYPE

Defect

UPDATED

20 Jan 2017

PRODUCTS

- Tanner EDA Tools

ENVIRONMENT

Installer

v2016.2

Solution

This problem should be corrected as of the "Tanner EDA Tools 2016.2 update 1" release.

The work-around is to first pre-install the latest version of the Microsoft Visual C++ Redistributable package for Visual Studio 2015 (<http://support.microsoft.com/en-us/kb/2977003#bookmark-vs2015>), prior to installing the Tanner EDA tools. This avoids all the errors.

Solution

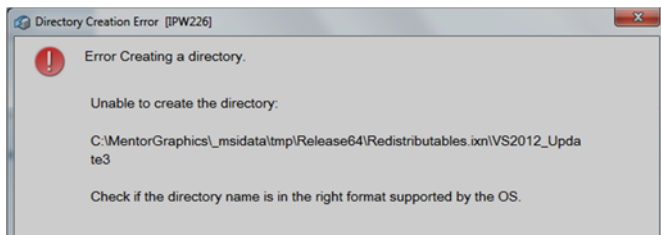
The work-around is to first pre-install the latest version of the Microsoft Visual C++ Redistributable package for Visual Studio 2015 (<http://support.microsoft.com/en-us/kb/2977003#bookmark-vs2015>), prior to installing the Tanner EDA tools. This avoids all the errors.

This is analogous to "Known Issue: mfc110.dll", and since CMI has not an armada of OS version test machines, I take Mentor's word for granted.

7. Known Issue: Unable to create a directory – VS2012_Update3 IPW226

(added 2017-09-14.)

During L-edit installation, just after confirming with “install”, you get this popup:



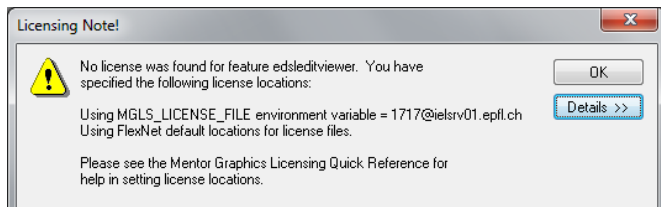
The message seems to have no significance whatsoever. Directories exist. May be an access rights issue. For the time being, **ignore**.

8. Known Issue: No license found for feature edsleditviewer

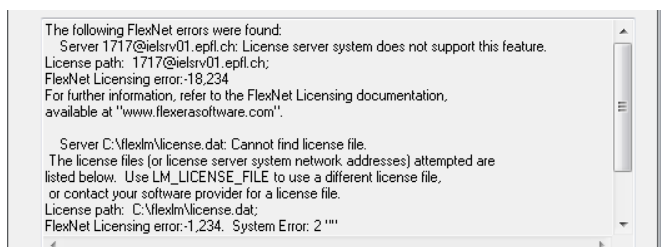
(added 2017-01-10.)

You start L-Edit, and you get this message:

“No license found for feature edsleditviewer”

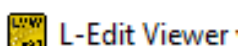


With details:

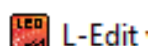


Simple solution:

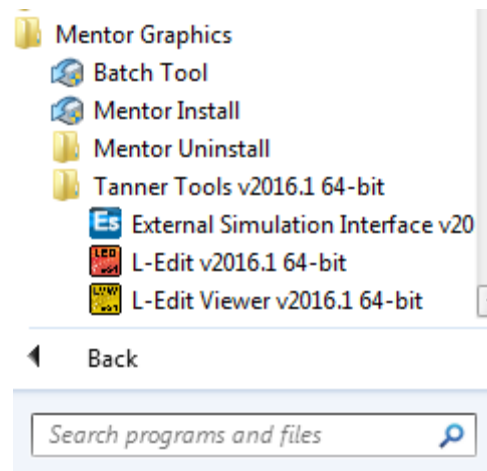
You started **L-Edit-Viewer**



instead of simply **L-Edit**



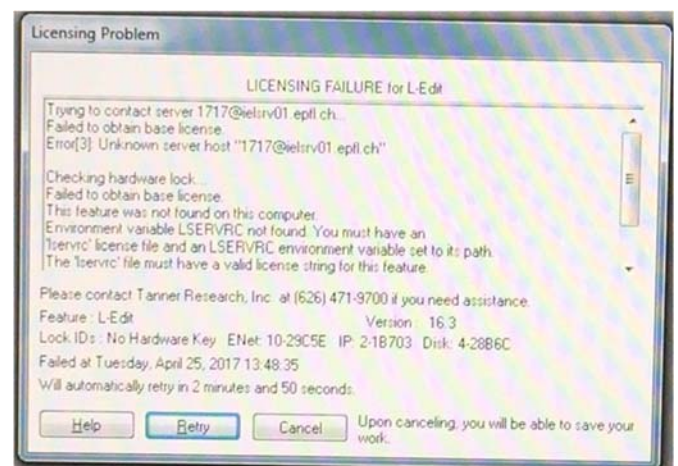
Please choose carefully in the start menu, they look alike, but are two approaches to the problem:



9. Known Issue: Failed to obtain base license

(added 2017-04-26.)

You start L-edit on your pc and get the error message that there is a licensing problem: “Failed to obtain base license”.



You are worried that you have configured the license incorrectly. However, the real problem is that you are using an L-Edit version (Here 16.3) from a time when the L-Edit was still run under the banner of Tanner Research EDA. Now the banner has been changed to Mentor Graphics, and the licensing of the old way cannot interact with the license file/ license server of the new way.

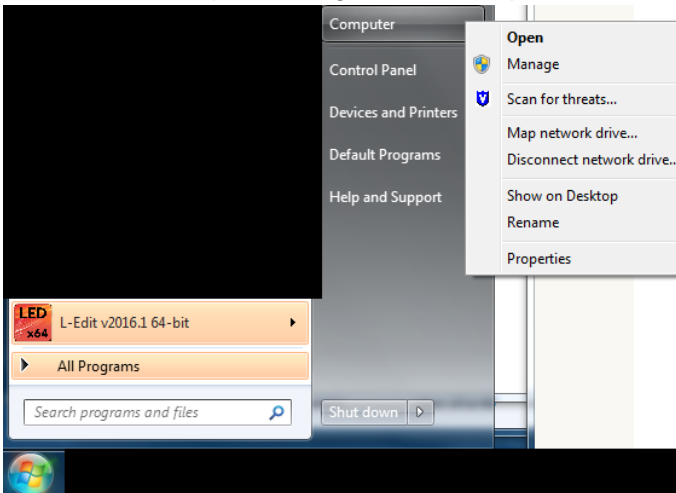
Solution: reinstall the L-Edit latest (Mentor) version (this guide).

10. Known Issue: is license working?

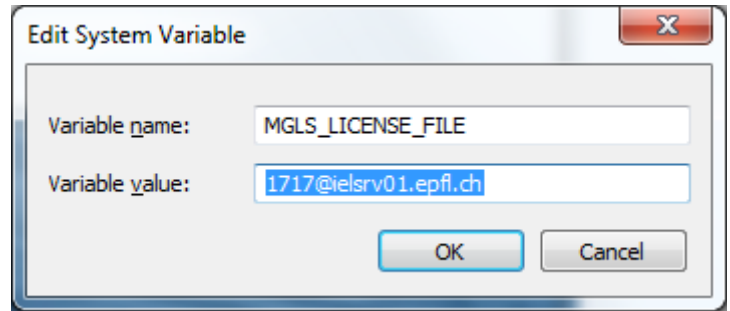
(added 2016-12-06.)

If licensing does not work, try to look at the environment variable. Then call staff.

Windows->Computer->RightClick->Properties

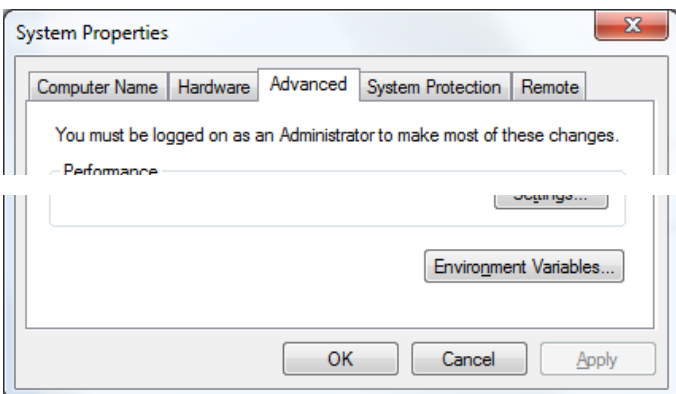


Add variable name: **MGLS_LICENSE_FILE** with variable value: **1717@ielsrv01.epfl.ch**



This should fix the issue. Otherwise call staff, or just restart from scratch.

On the advanced Tab, chose Environment Variables.



Under "System variables", hit "New"

