

BSF ACCESS

Swiss academic chemical screening



• • *from assay development to hit validation* • •

CONTACT

gerardo.turcatti@epfl.ch

+41 (0)21 693 96 66

<http://bsf.epfl.ch>

PROJECT SUBMISSION

- **Step 1**
Informal exchange of information
- **Step 2**
Screening proposal submission (form to download at <http://bsf.epfl.ch>)
- **Step 3**
Evaluation | implementation | validation

CONSULTING | TRAINING EDUCATION

- Project planning, advising, coaching & training
- Yearly summer courses
- Hands-on workshops
- Open-door events
- Visits
- Open to EPFL Master's and PhD programs

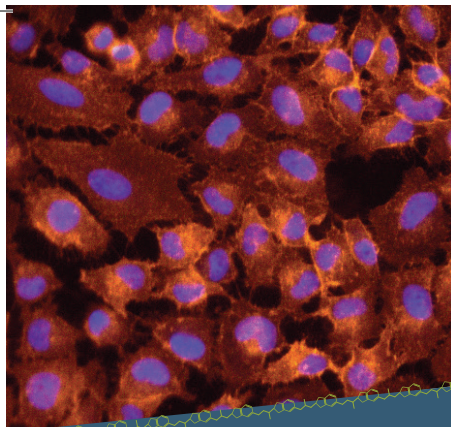
Photos: BSF-ACCESS / Design: N. Chavan

EPFL
BIOMOLECULAR
SCREENING
FACILITY

BSF ACCESS

ACADEMIC SCREENING PLATFORM FOR SWITZERLAND

• • *screening facilities • know-how in chemical genetics • chemical diversity* • •



ASSAYS

In vitro target-based
molecular interaction
assays

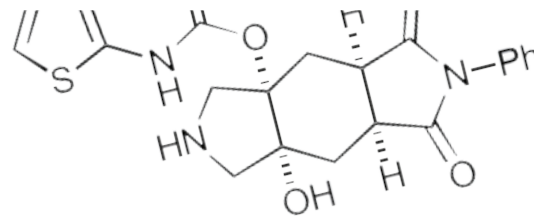
Target or pathway
cell-based assays

Phenotypic assays



OUR MISSION

Empowering the Swiss Academia
to discover the next generation of bio-active molecules



SERVICE PORTFOLIO

Access to unique chemical collections

Compound management

Assay design, development & validation

State-of-the-art high-throughput screening

Data interpretation & validation

Scientific consulting

Training & education

Open laboratory facilities



CHEMICAL COLLECTIONS

100'000 chemicals

**Selected commercial compounds
including**

Chemically diverse sets
Approved drugs
Natural products
Protein-protein interactions
Kinase inhibitors

Swiss chemical collection

About 500 chemicals collaboratively built
by Swiss academia