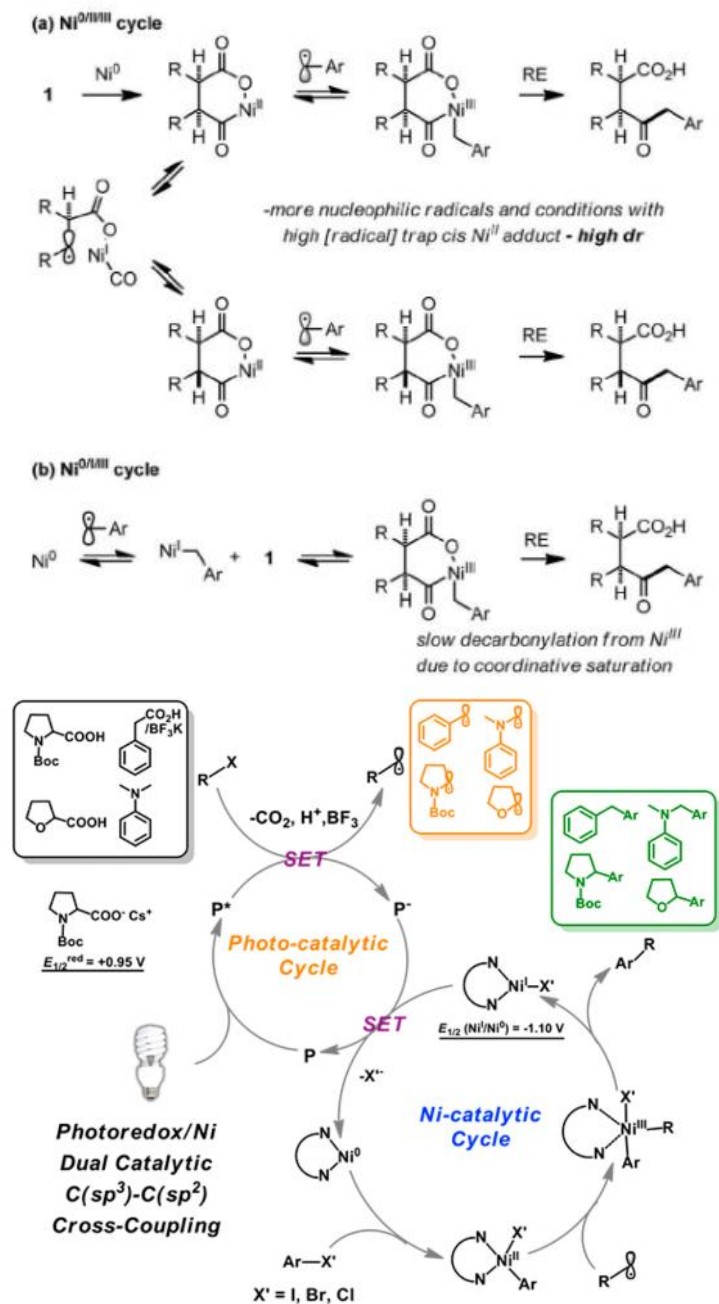
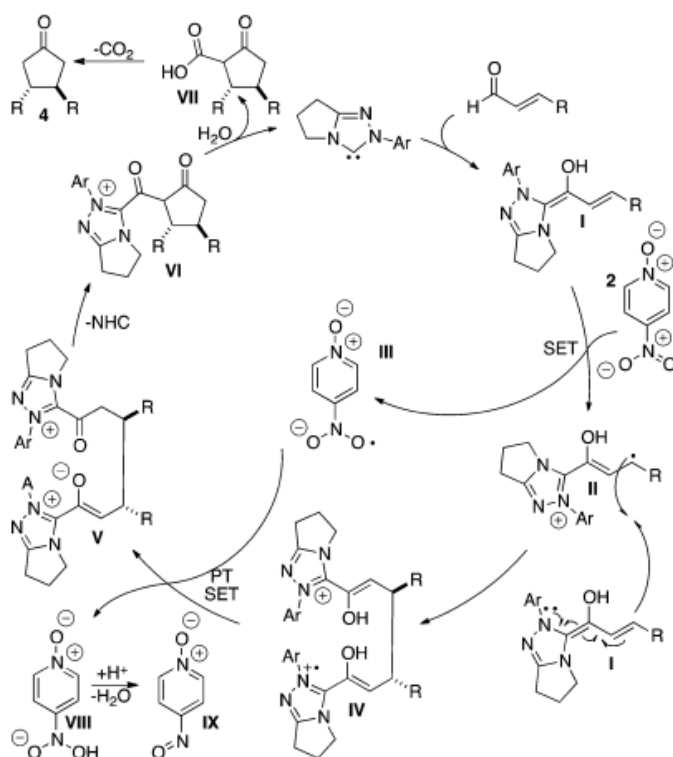


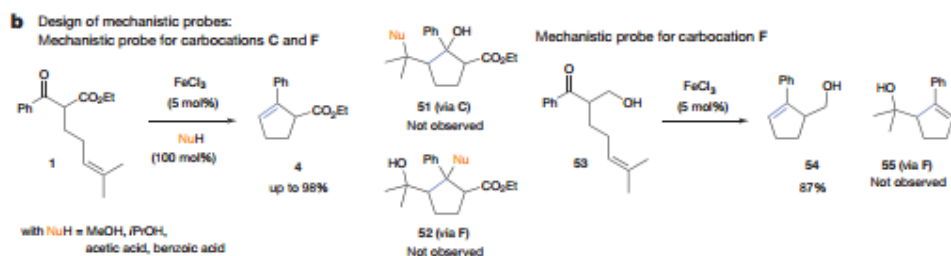
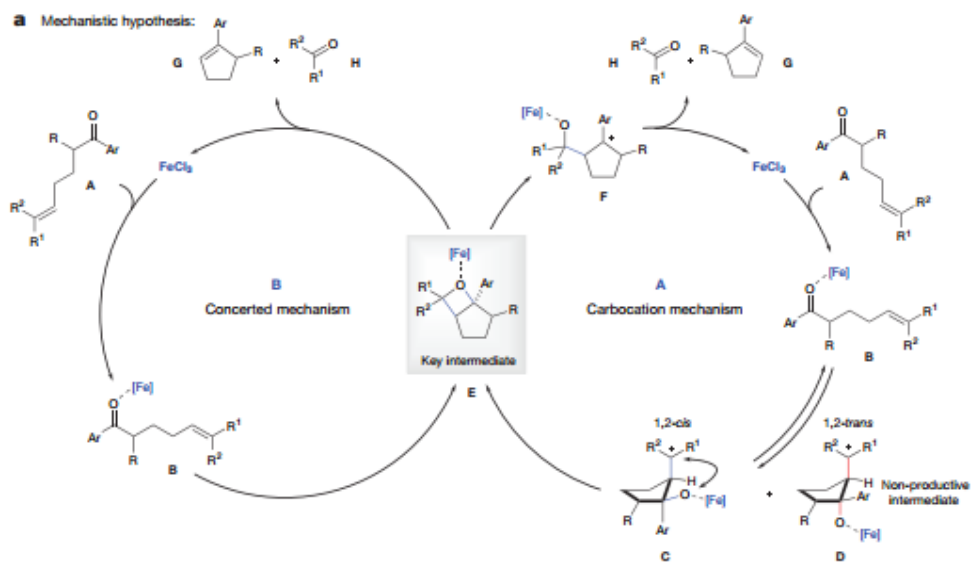
1) *ACIE*, **2017**, *56*, 3679



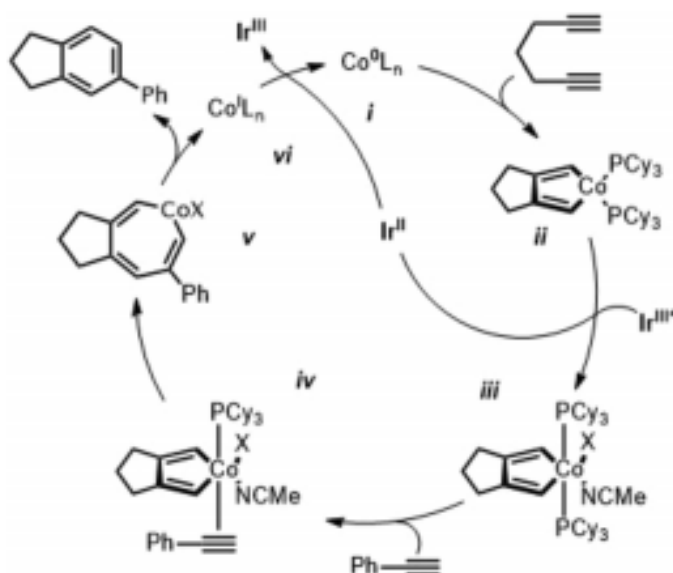
2) *JACS*, **2015**, *137*, 10112



3) *Nature*, 2016, 533, 374

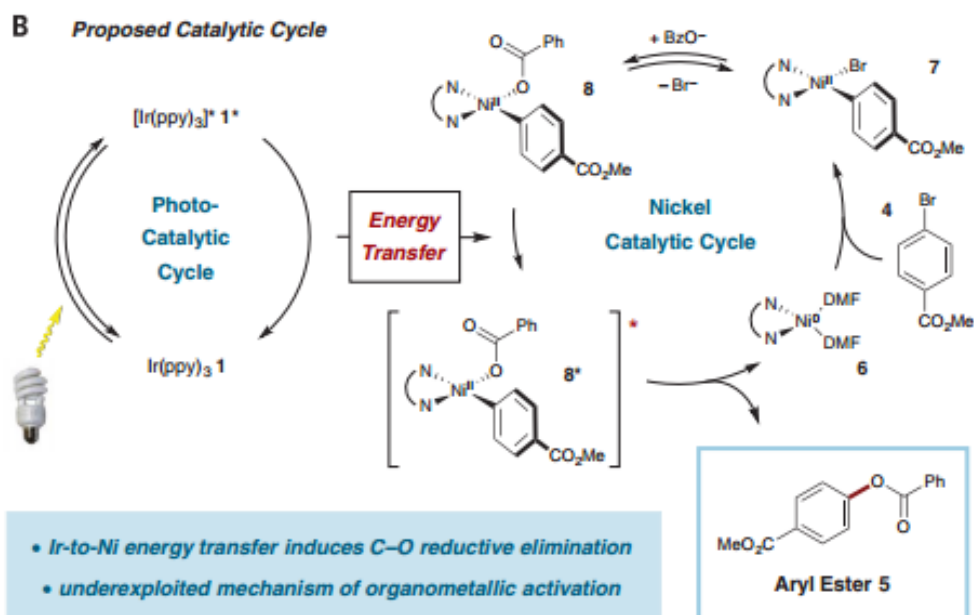


4) *JACS*, **2016**, *198*, 15527



DIPEA first reduces Ir(III) to Ir(II) which in turn reduces Co(II) to Co(I) which then disproportionates to Co(0) (and Co(II)) to start the catalytic cycle. If the amine was omitted, the reaction still proceeded probably using the phosphine as the initial reductant.

5) *Science*, **2017**, *355*, 380



6) *JACS*, **2017**, *139*, 3805