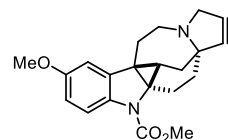
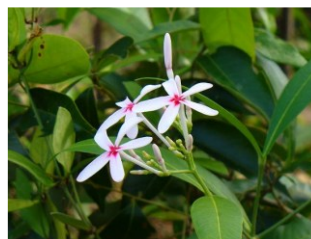


Total Synthesis of (±)-Lundurine B

Nishida: Org. Lett. 2014, 16, 768–771



- hexacyclic framework
- cyclopropane-fused indoline skeleton
- folk medicine biologically active alkaloid
- toxicity toward B16 melanoma cells



Isolated from *Kopsia tenuis*
by Kam and co-workers in 1995

(±)-Lundurine B

