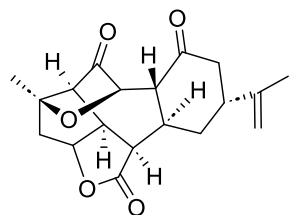


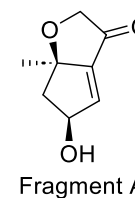
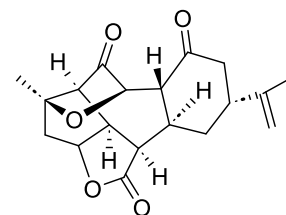
A Convergent Total Synthesis of (+)-Ineleganolide

Benjamin M. Gross, Seo-Jung Han, Scott C. Virgil, and Brian M. Stoltz*
J. Am. Chem. Soc. **2023**, *145*, 7763–7767

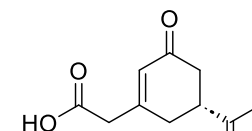


(+) - Ineleganolide

- isolated from the Formosan soft coral *Sinularia inelegans*
- cytotoxic against P-380 leukemia cell lines

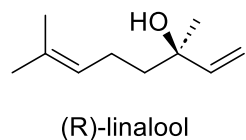


Fragment A

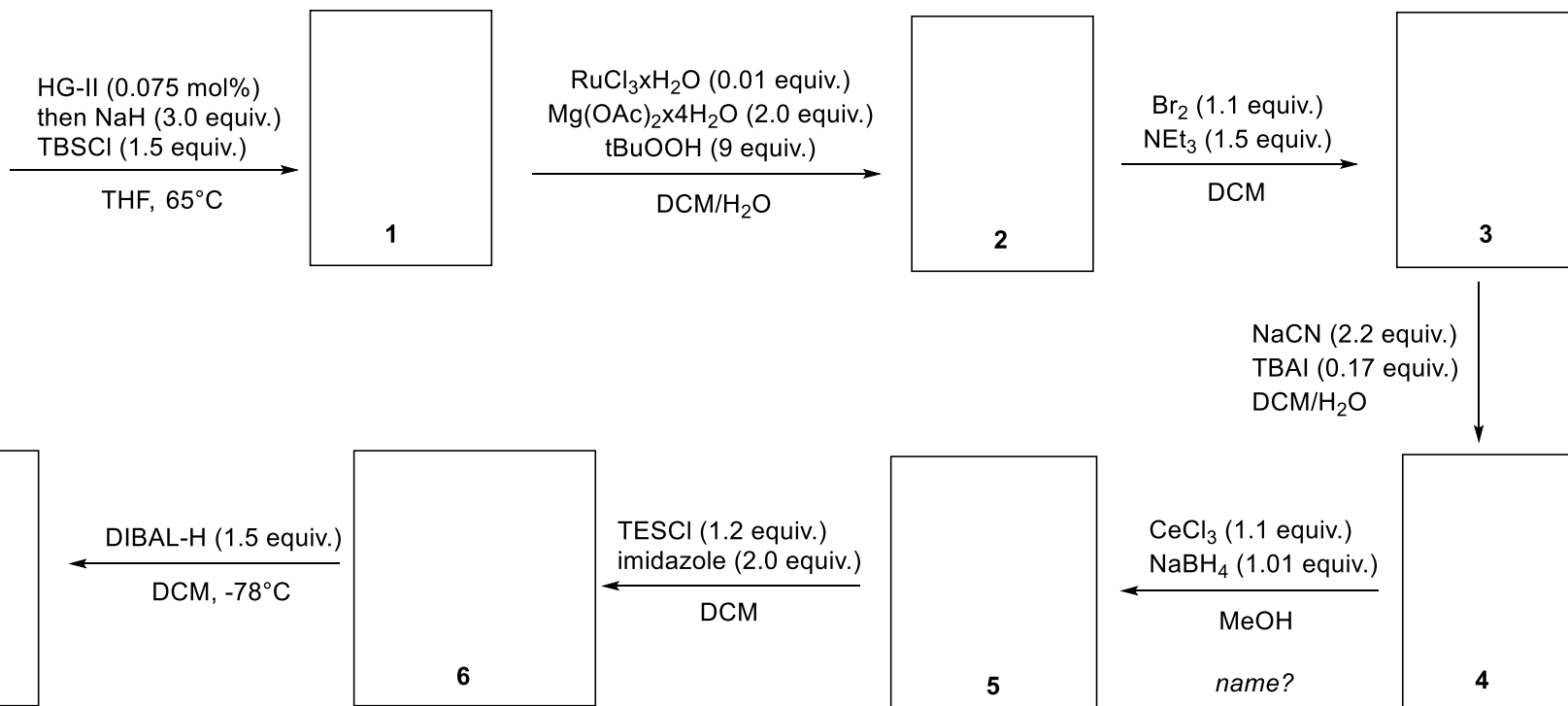


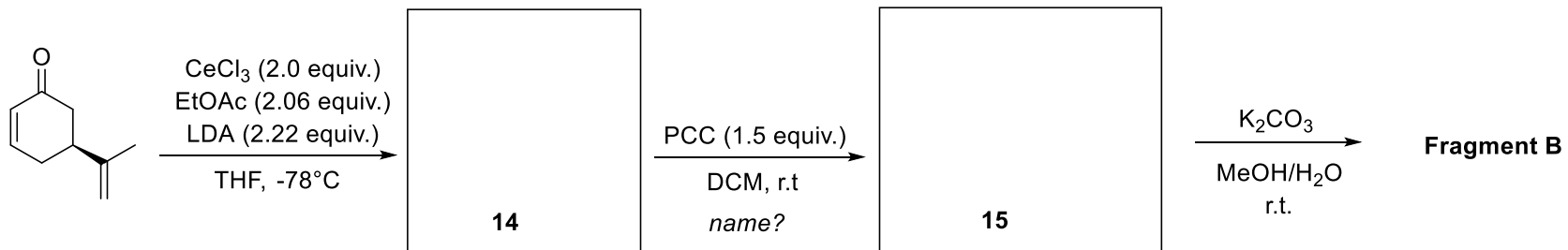
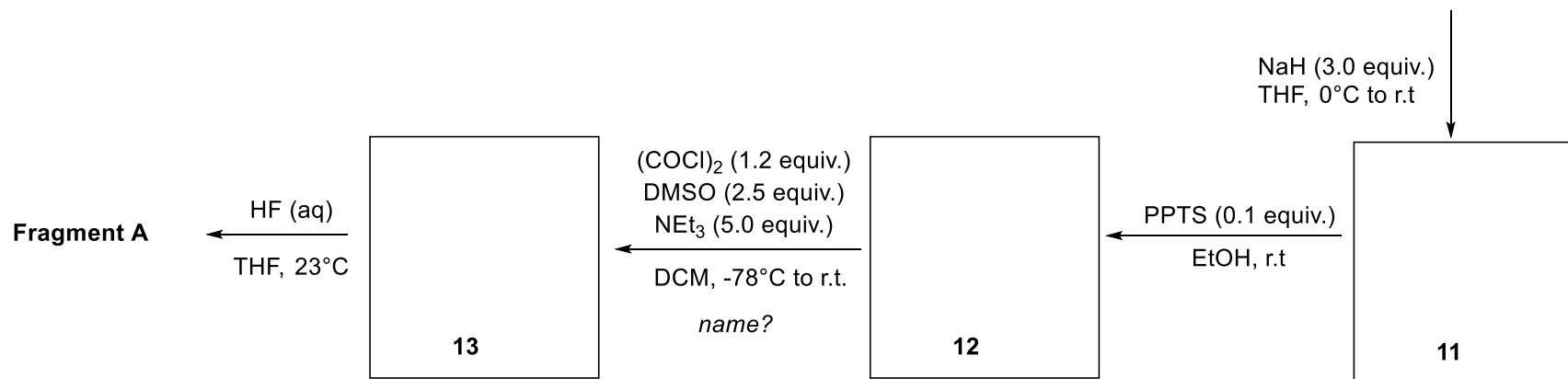
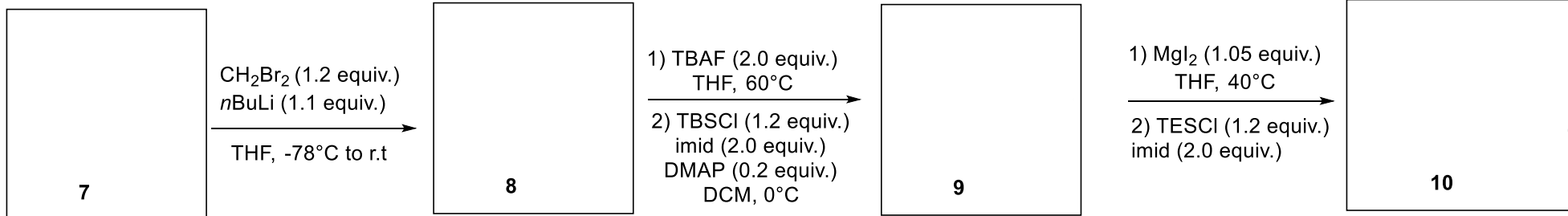
Fragment B

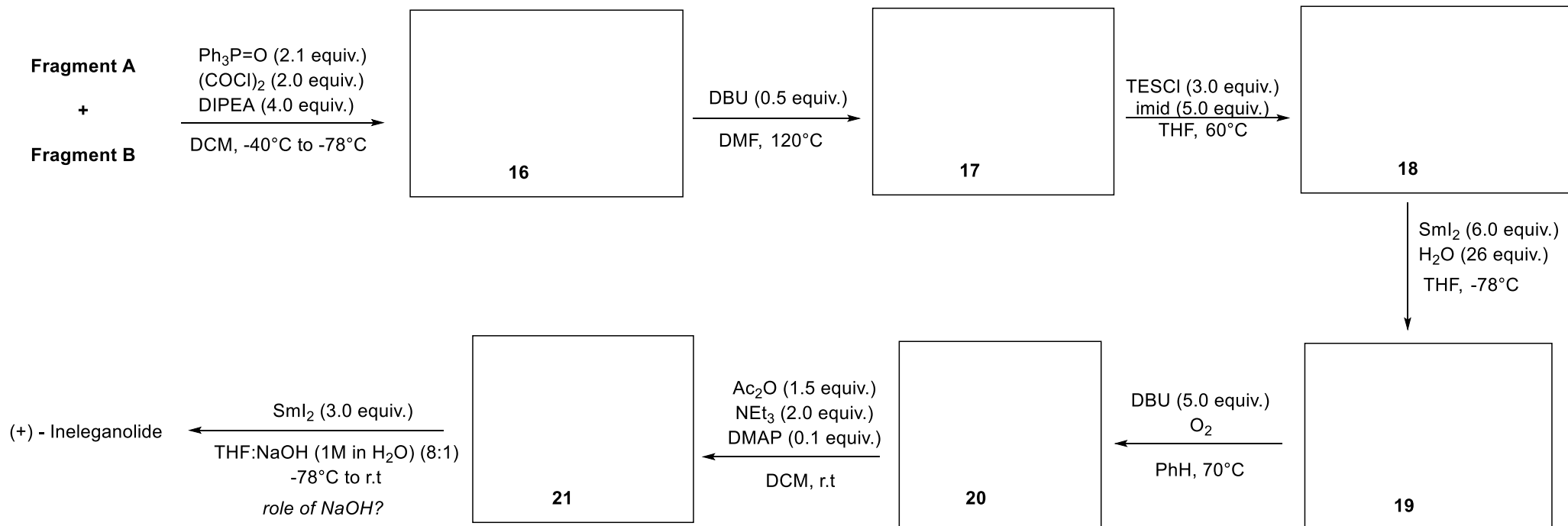
Fragment A



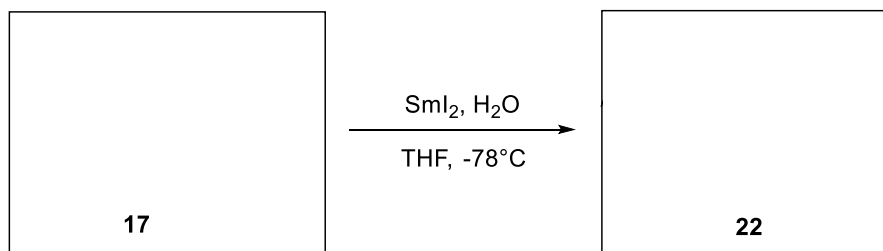
(R)-linalool





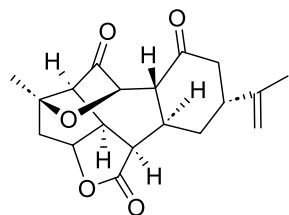


Dessert:



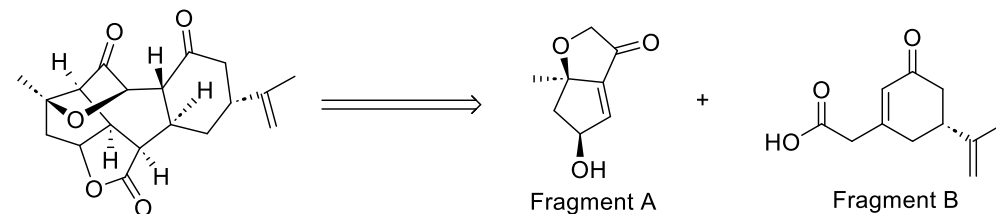
A Convergent Total Synthesis of (+)-Ineleganolide

Benjamin M. Gross, Seo-Jung Han, Scott C. Virgil, and Brian M. Stoltz*
J. Am. Chem. Soc. **2023**, *145*, 7763–7767

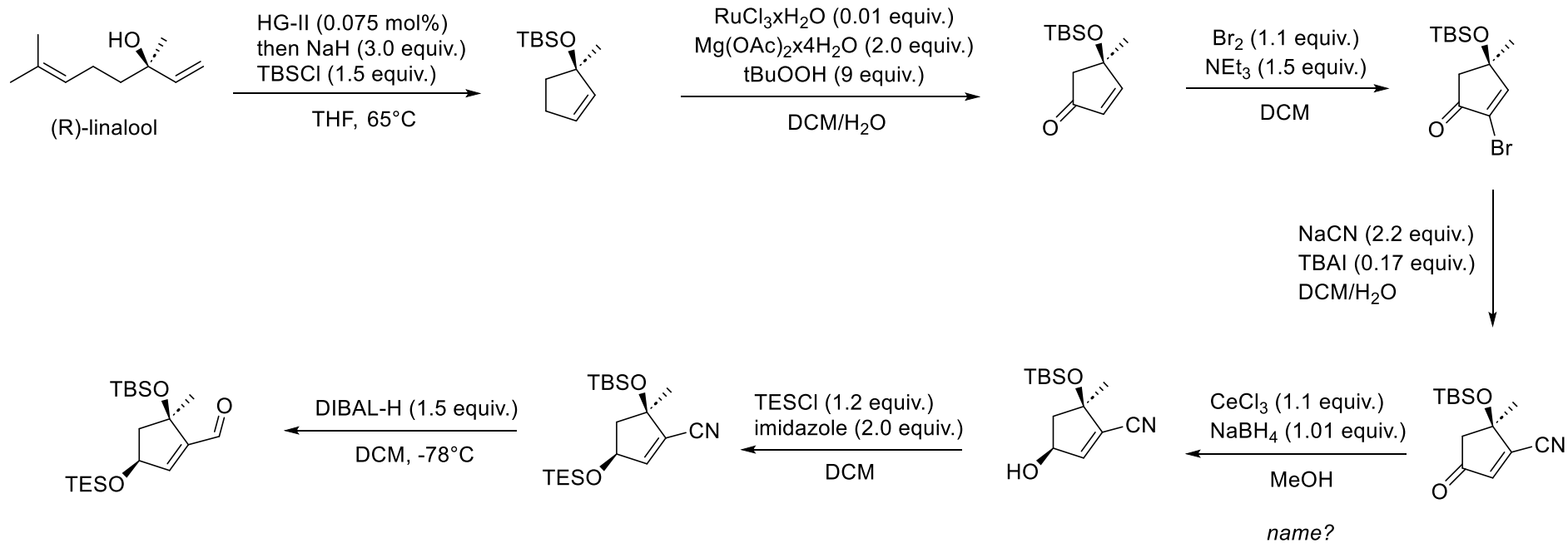


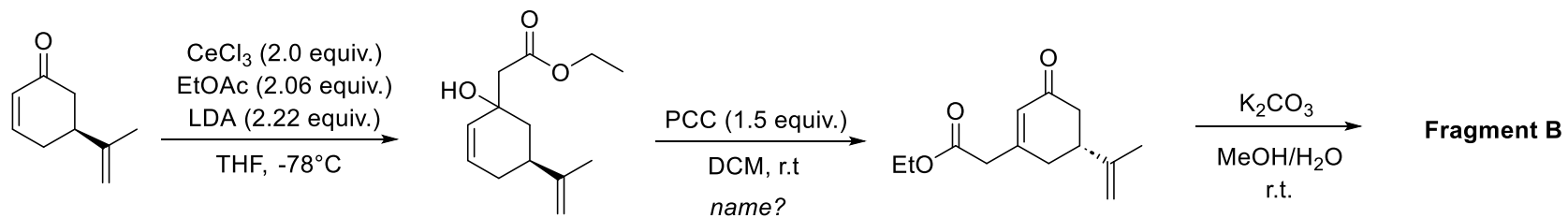
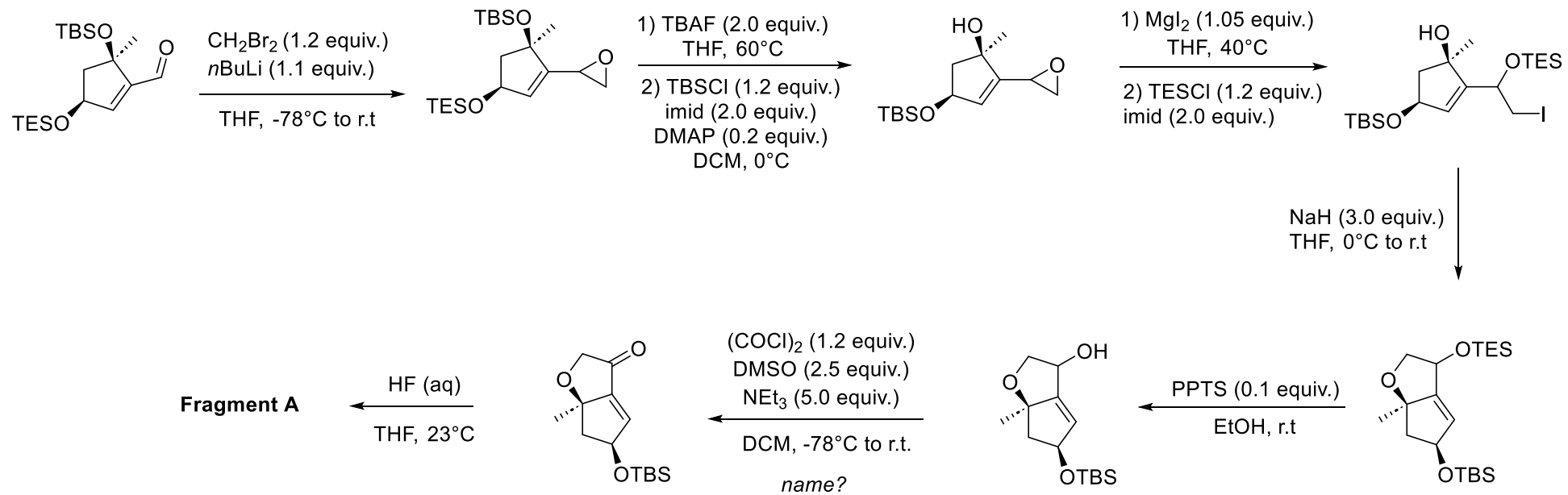
(+) - Ineleganolide

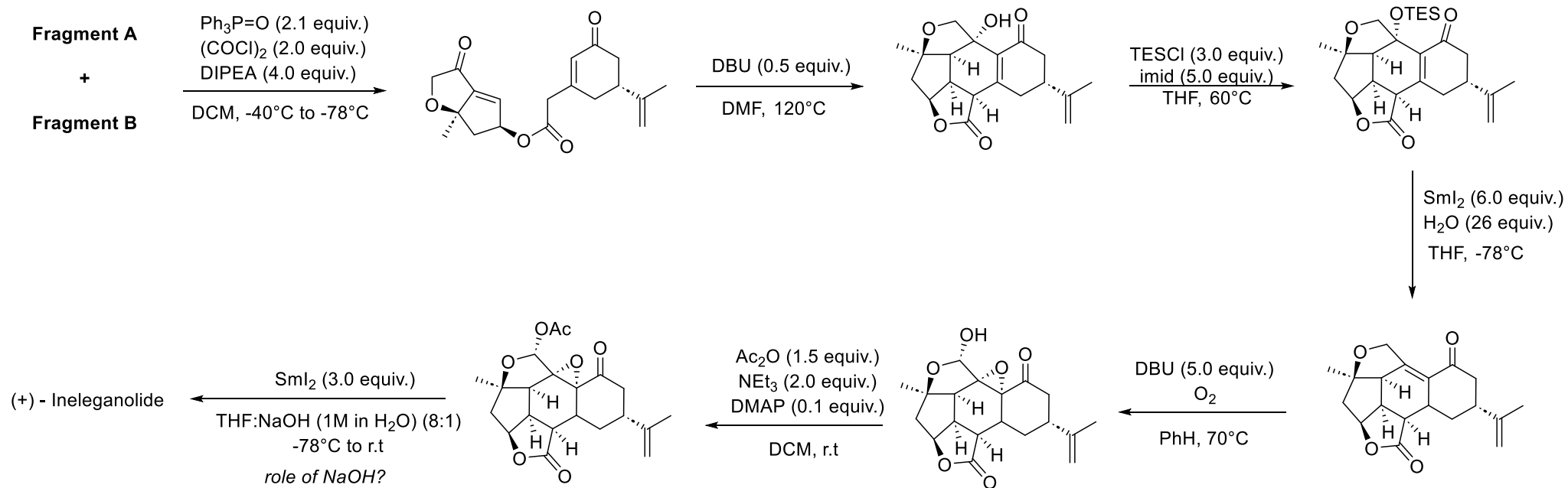
- isolated from the Formosan soft coral *Sinularia inelegans*
- cytotoxic against P-380 leukemia cell lines



Fragment A







Dessert:

