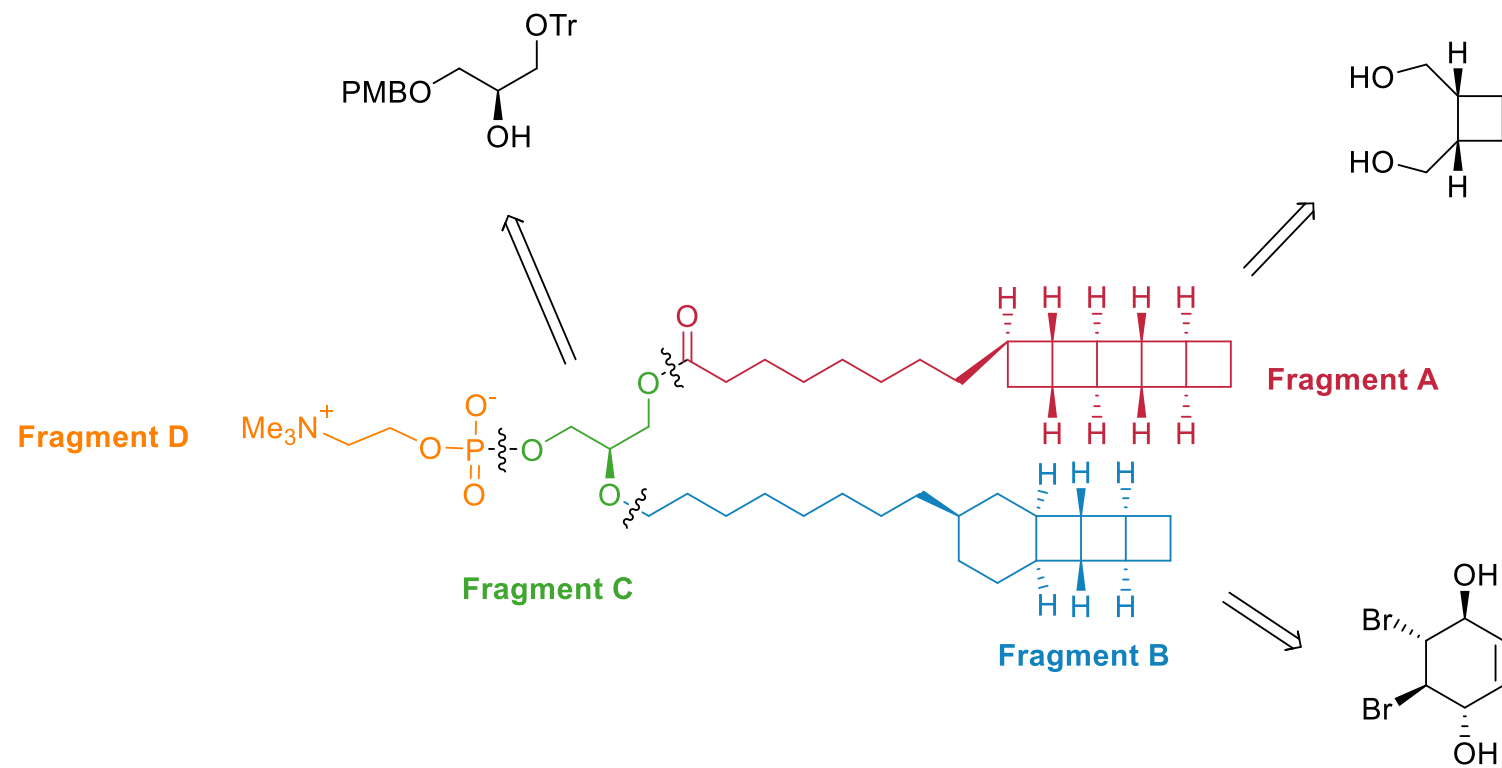


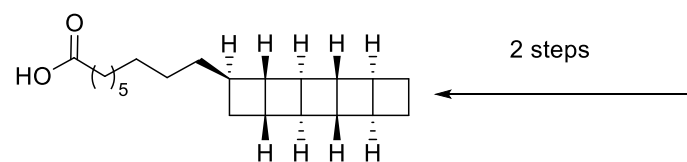
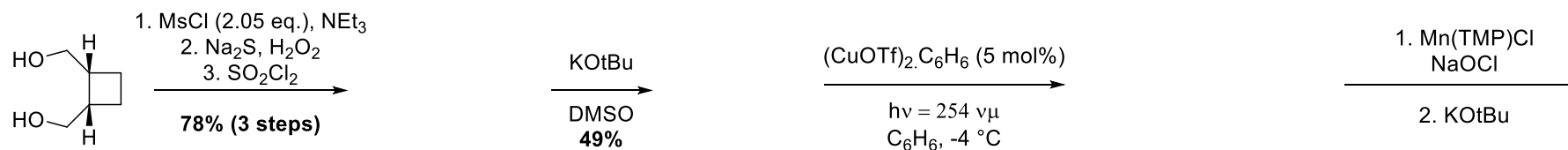
Burns, N. Z. *J. Am. Chem. Soc.* **2016**, *138* (49), 15845–15848

- Produced by anammox bacteria
- First proof of absolute configuration of natural ladderane
- 8 cyclobutanes

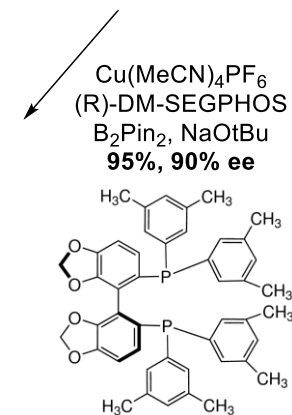
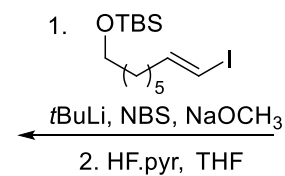
4 fragments: which ones ?



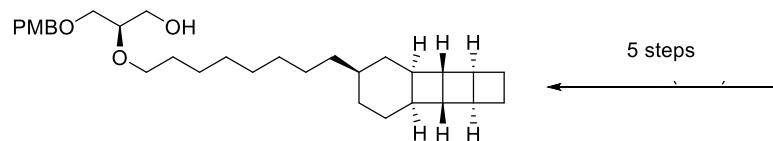
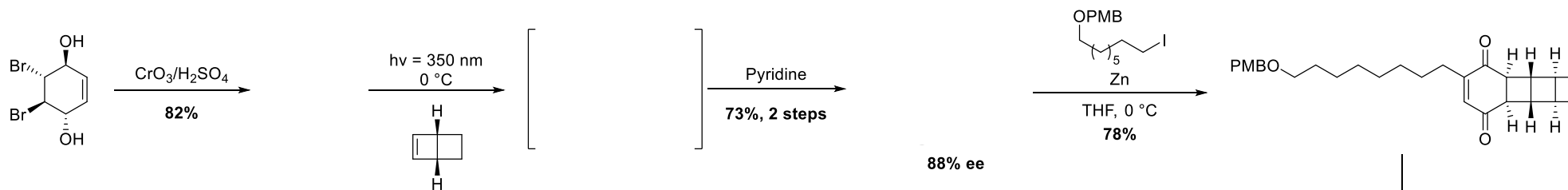
Fragment A



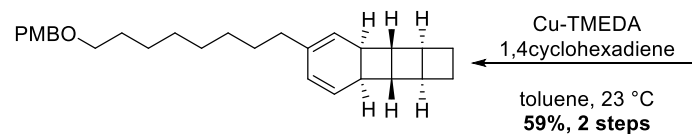
Fragment A



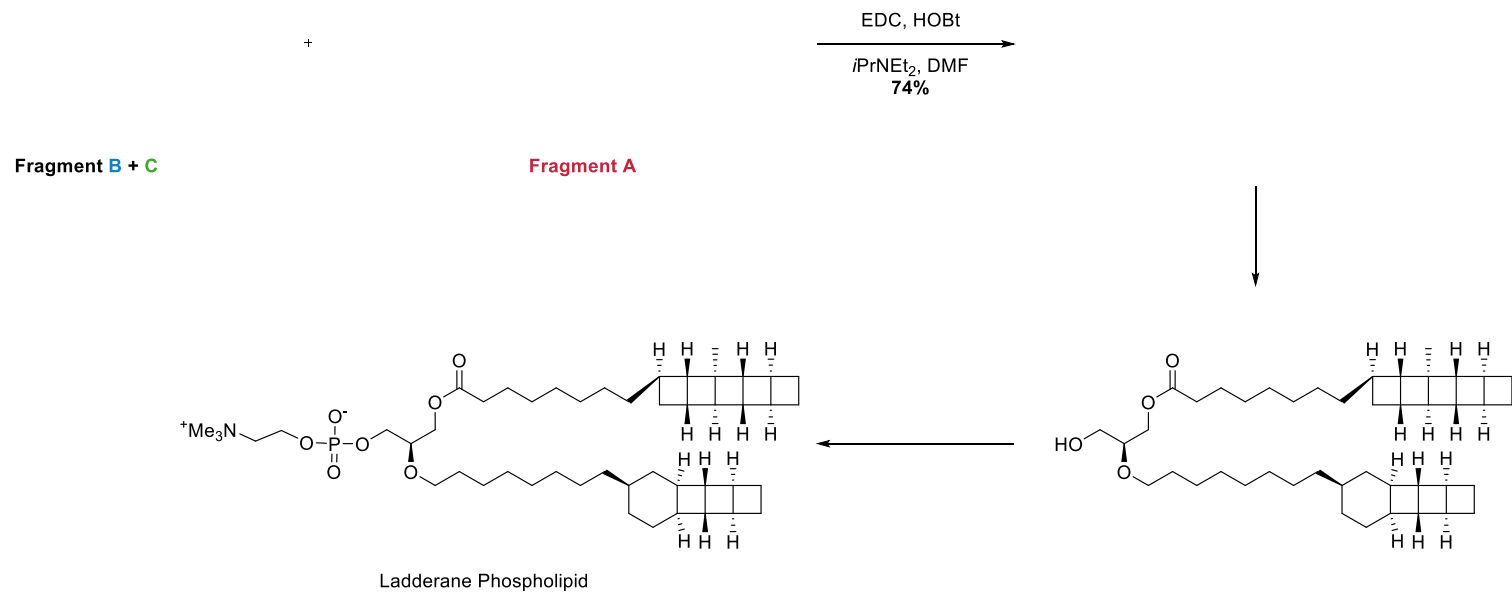
Fragment B



Fragment B + C

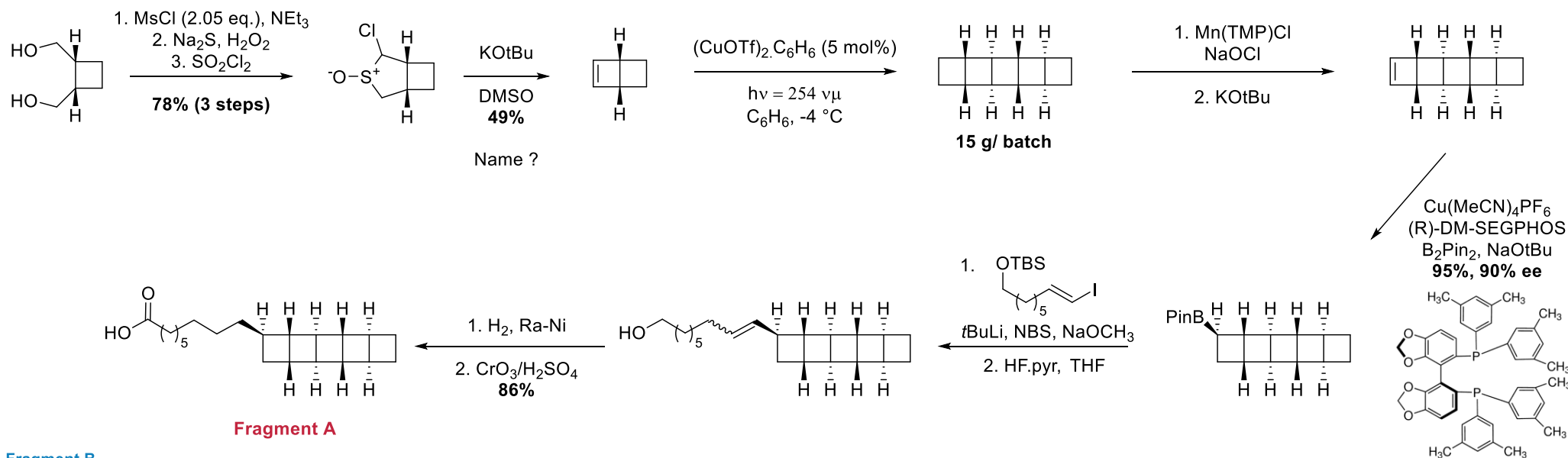


Fragment B



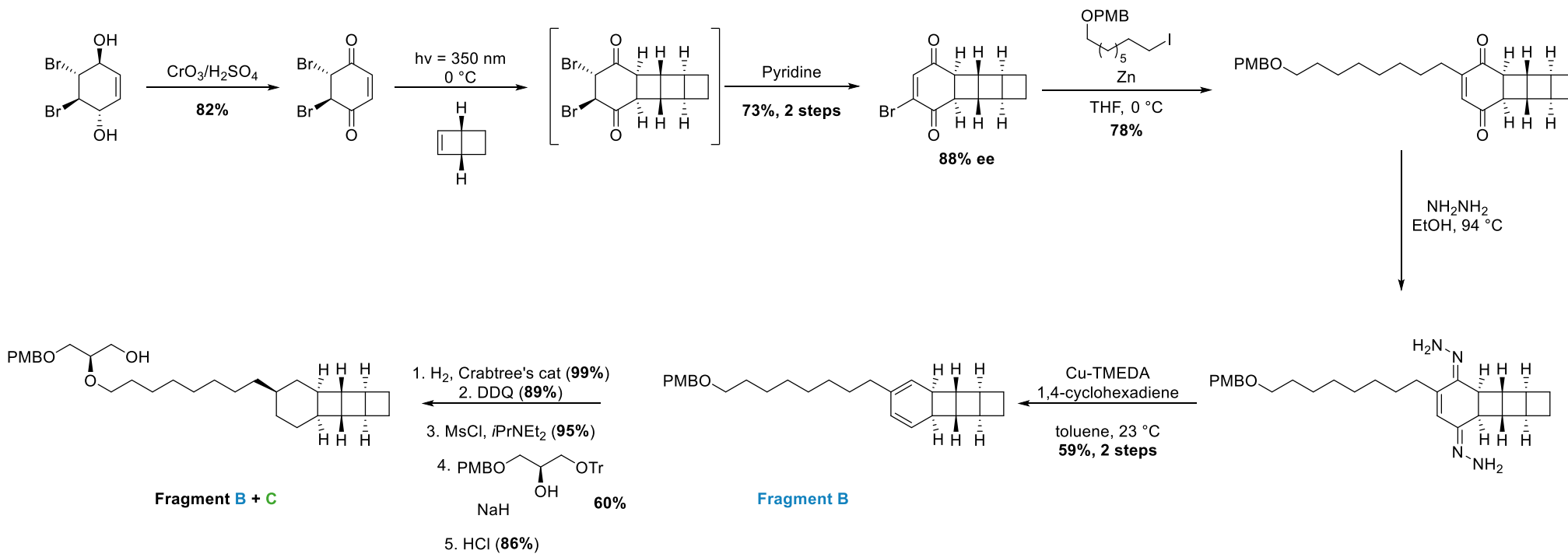
Fragment A

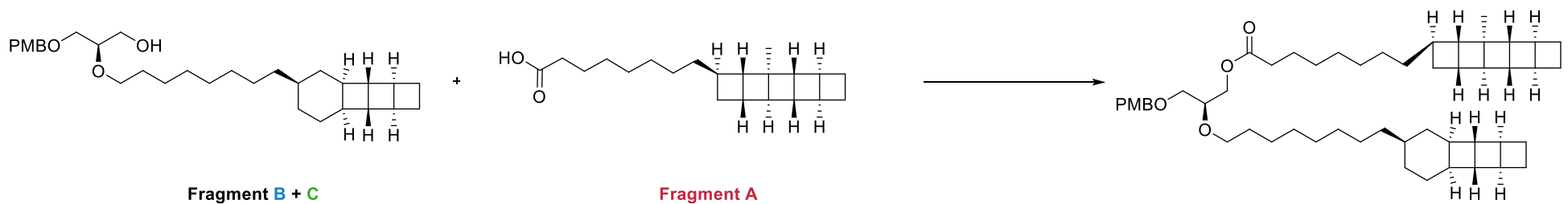
Solutions



Fragment A

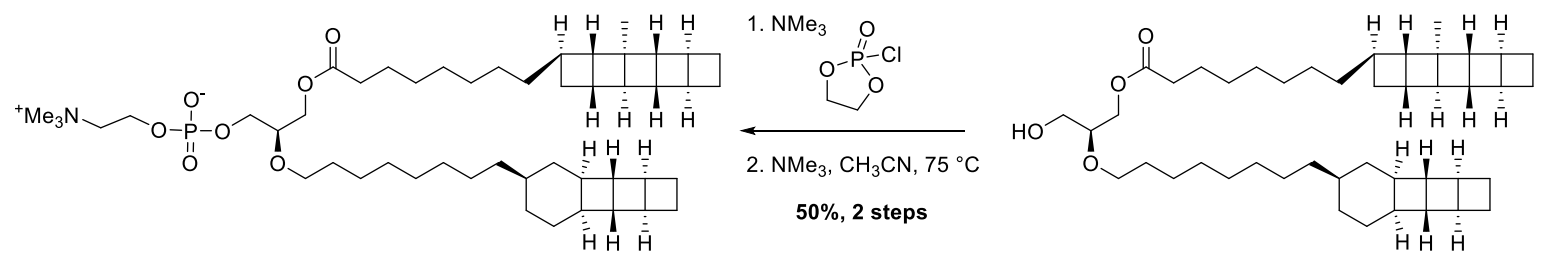
Fragment B





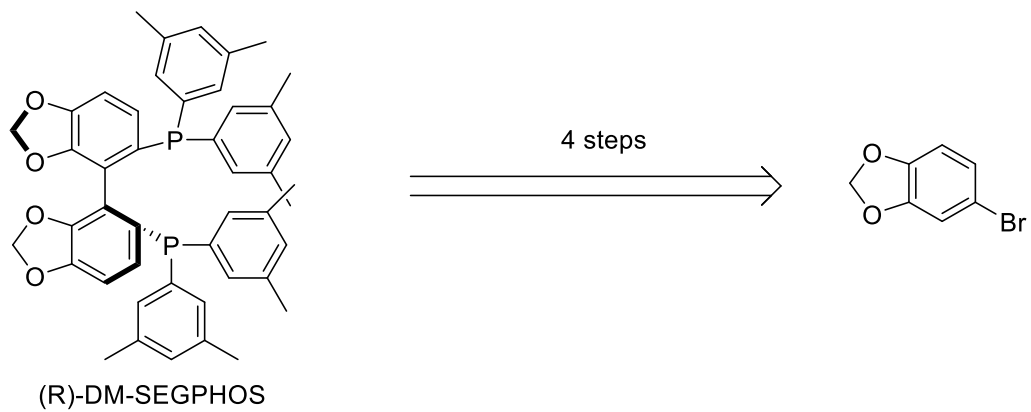
Fragment B + C

Fragment A



Ladderane Phospholipid

If time



(R)-DM-SEGPHOS