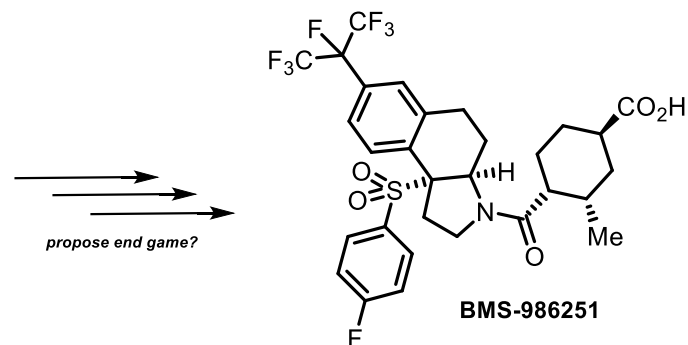
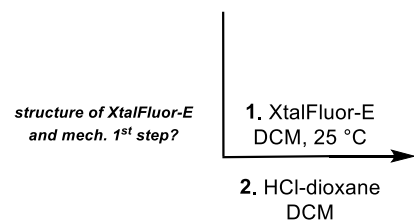
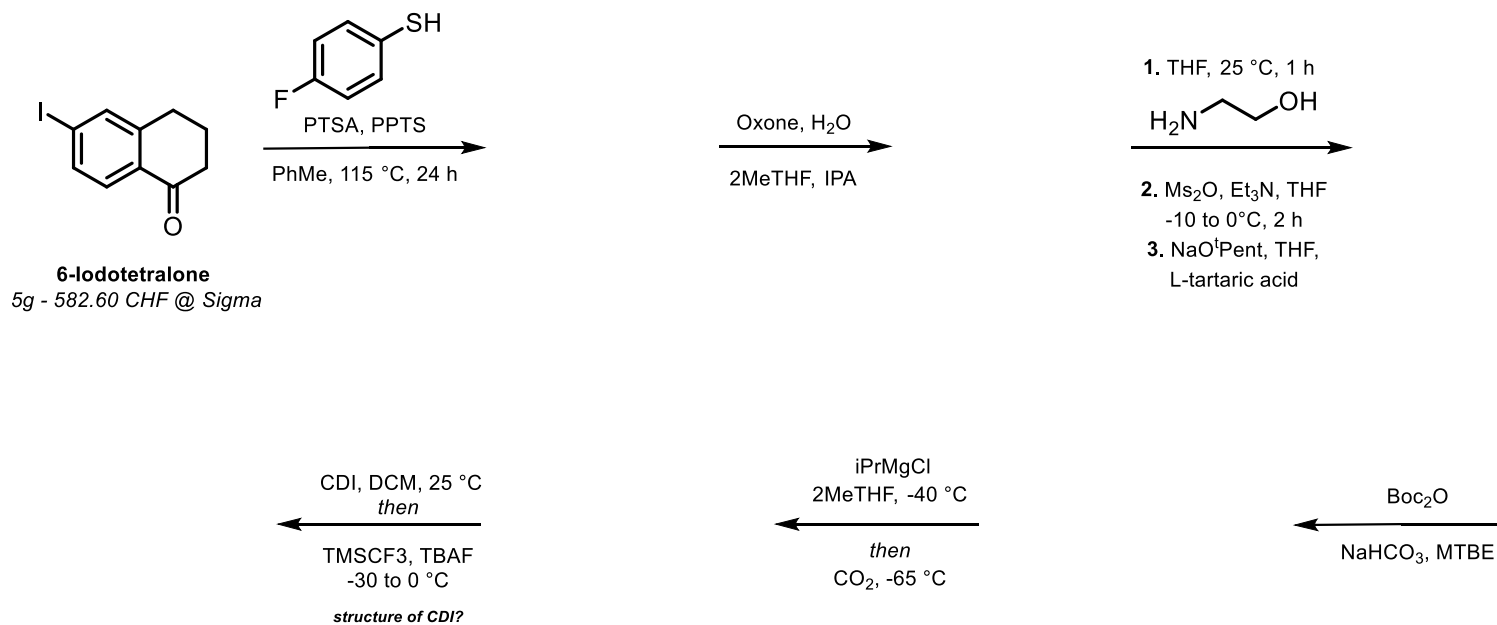


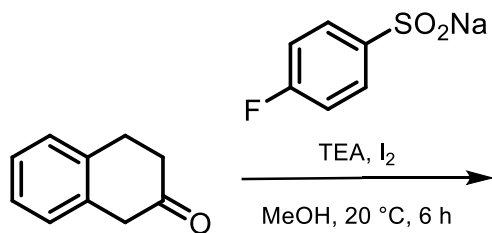
- discovered and developed at BMS (**2019**)
- potent small-molecule RORy1 inverse agonist
- 5 stereocenters
- complex heterocyclic core
- uncommon heptafluoroisopropyl group
- polyfunctionalised cyclohexyl ring

*Org. Process Res. Dev.* **2021**, DOI: 10.1021/acs.oprd.1c00338.

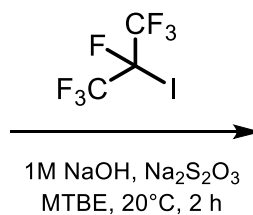
**Initial route to Intermediate A**



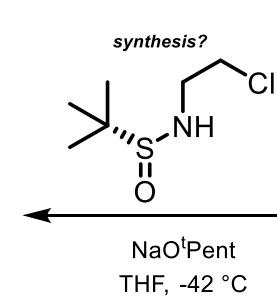
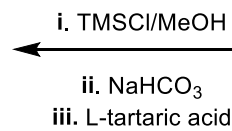
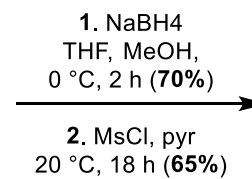
**New asymmetric route to Intermediate A**

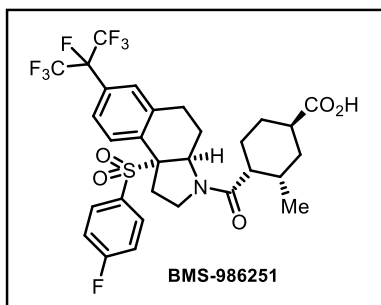


**beta-tetralone**  
5g - 73.40 CHF @ Sigma



*mechanism?*

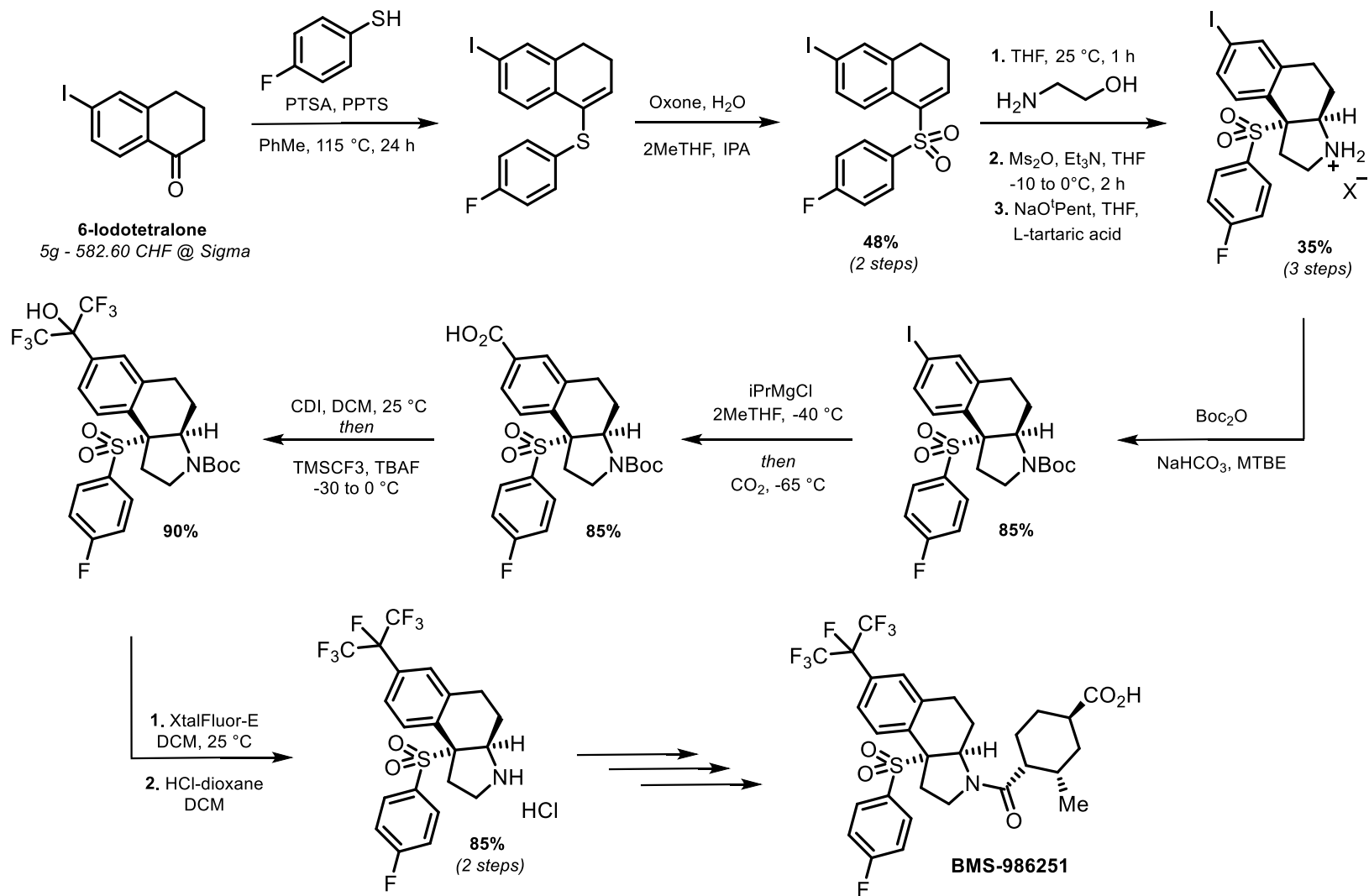




- discovered and developed at BMS (**2019**)
- potent small-molecule ROR $\gamma$ 1 inverse agonist
- 5 stereocenters
- complex heterocyclic core
- uncommon heptafluoroisopropyl group
- polyfunctionalised cyclohexyl ring

## Solutions

### Initial route to Intermediate A



**New asymmetric route to Intermediate A**

