

Pateamine A

Derived from a New Zealand sponge of the Mycale genus

A potent and selective inhibitor of the eukaryotic initiation factor

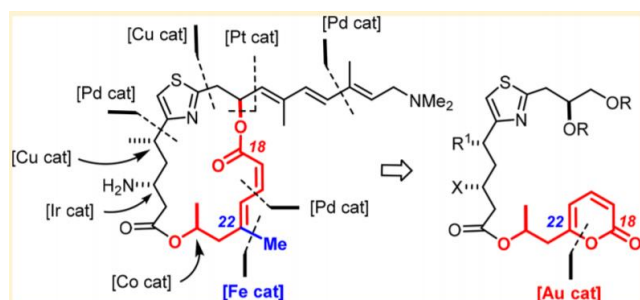
4A (eIF4A)

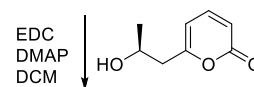
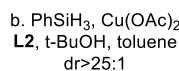
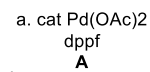
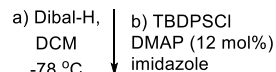
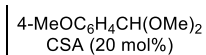
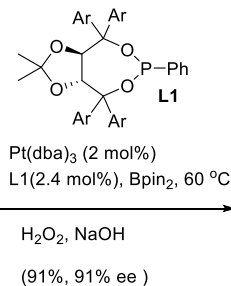
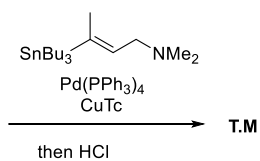
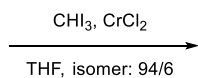
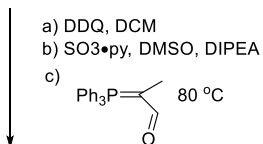
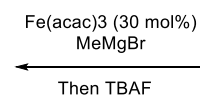
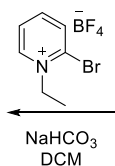
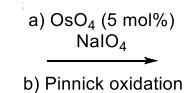
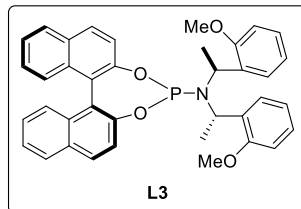
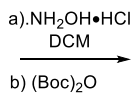
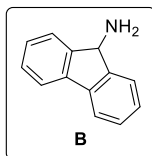
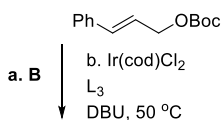
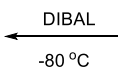
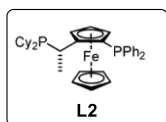
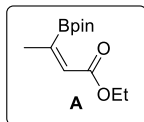
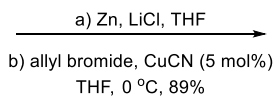
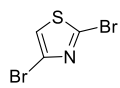
Reported route: *J. Am. Chem. Soc.* **1998**, *120*, 12237. *J. Am. Chem. Soc.* **2004**, *126*, 10582.

Synthesis based on chiral auxiliaries overall yield $\leq 0.09\%$ and $\leq 0.19\%$.

Alois Fürstner and co-workers: *J. Am. Chem. Soc.* **2018**, *140*, 10514.

Overall 5.3% yield, no use of chiral auxiliaries.





Solutions

