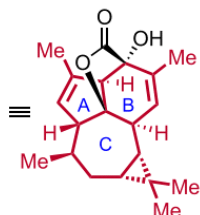


(+)-Euphorikanin A (1)



5/6/7/3-fused skeleton

• 1st TS of (+)-euphorikanin A

• plant family of spurge (*Euphorbiaceae*)

• isolated in **2016**, novel diterpenoid from the roots of *Euphorbia kansui*

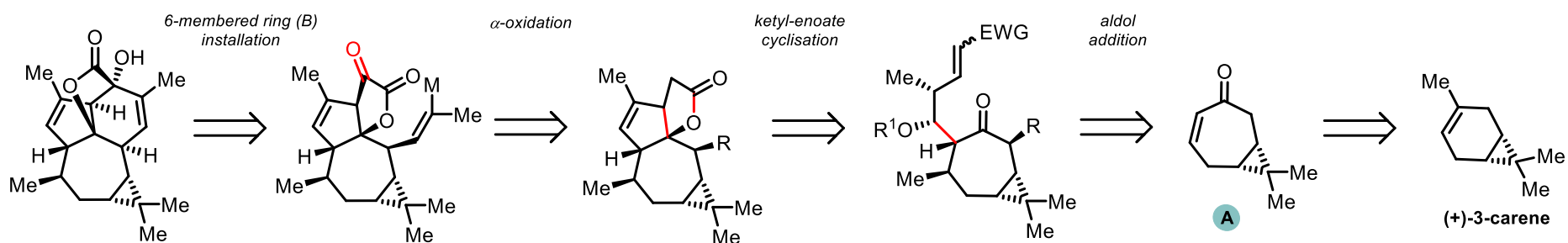
• root extracts widely used in traditional Chinese medicine

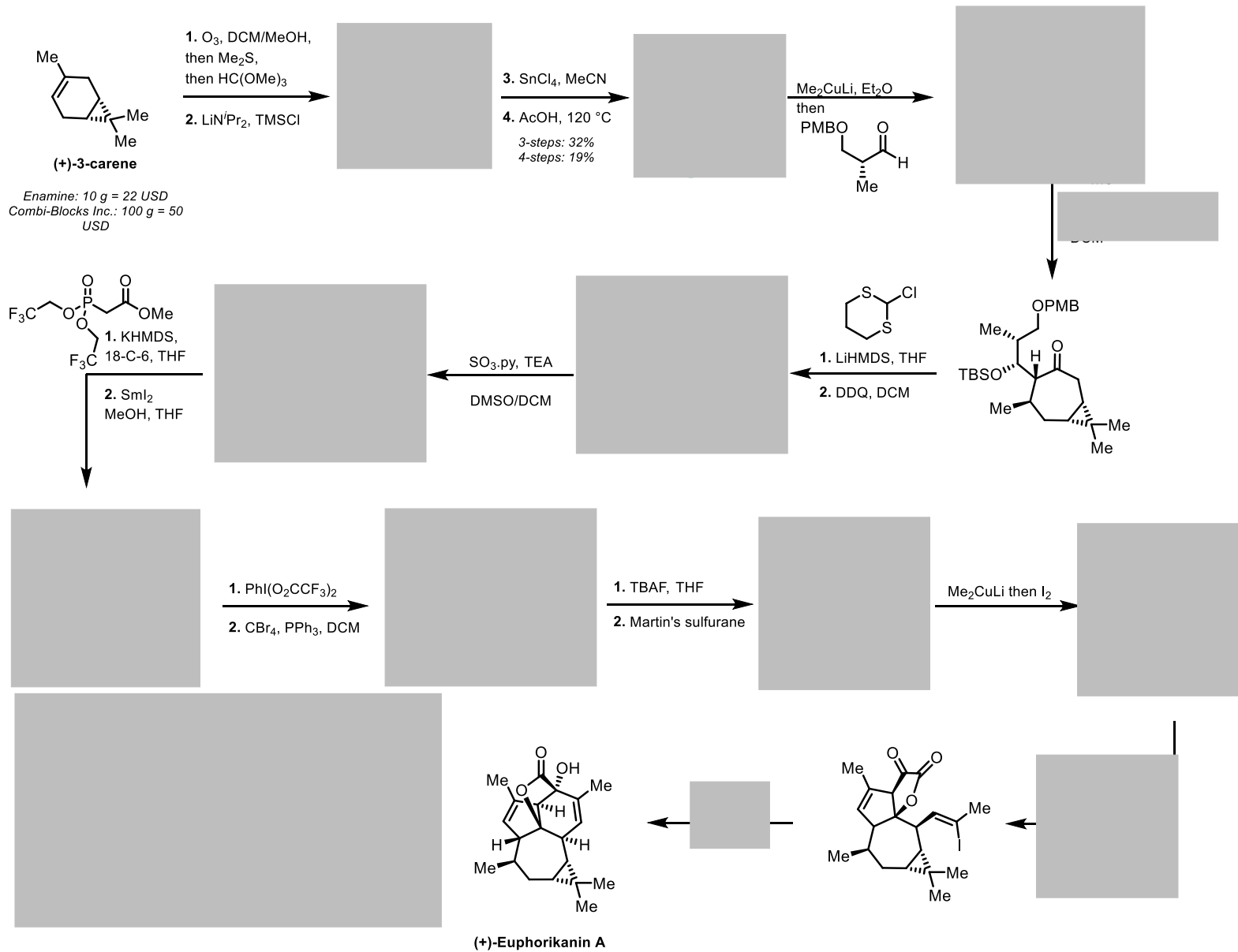
• cytotoxicity against two human tumor cell lines

Carreira *et al.* *J. Am. Chem. Soc.* **2021**, 143, 8261.

• potential new treatments for HIV

Retrosynthetic analysis:





Solutions

