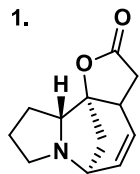


GM 07.04.2015

1.



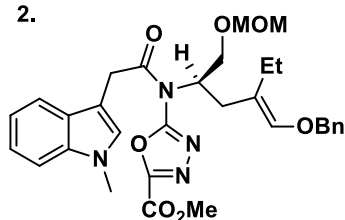
(-) norsecurinine

1. mCPBA, MeOH.
2. xylene, reflux.
3. mCPBA, DCM.
4. (-) norsecurinine,
toluene reflux

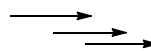
(-)-flueggine A

Angew. Chem. Int. Ed. **2013**, 52,620-624

2.



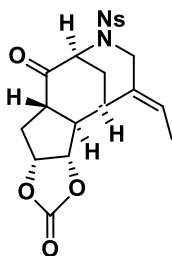
1. xylene, 150°C.
2. NaCNBH₃.

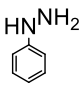


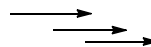
Vindoline

JACS, **2010**, 132, 3685-3687

3.



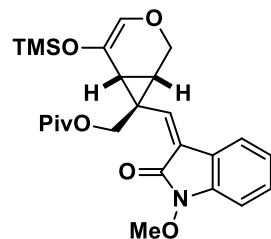
1. TFA, DCE, 
2. NaOH, H₂O.
3. NaIO₄.



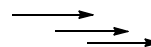
Picrinine

JACS, **2014**, 136, 4504-4507

4.



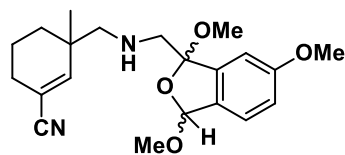
1. TBAF, AcOH,
70°C, toluene.



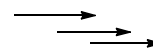
Gelsemoxonine

JACS, **2011**, 133, 17634-17637

5.



1. 10% TFA.
2. THF, 180°C.



Nominine

JACS, **2006**, 128, 8734-8735