



**Swiss SKA Day  
May 18, 2016**

**Welcome to Ecole Polytechnique  
Fédérale de Lausanne**

**EPFL**

**Karl Aberer, Vice-president for Information Systems**

# EPFL History

1968 – Act on the Federal  
Institutes of Technology

## 1853



Maison Bischoff  
rue Saint-Pierre  
In Lausanne

## 1946



Ancien Hôtel Savoy  
29-33 avenue de Cour  
In Lausanne

## Today



Ecublens-Dorigny



Ecole spéciale  
de Lausanne

## EPUL

## EPFL

Students	11	399
Faculty		

1,293	9,921 (2014)
56	338 (2014)

# EPFL today

## Campus (2014)

9,921 students, of whom 2,032 PhD students

338 faculty

4,508 staff (scientific & technical)

## Spending (2014)

CHF 645M from State budget

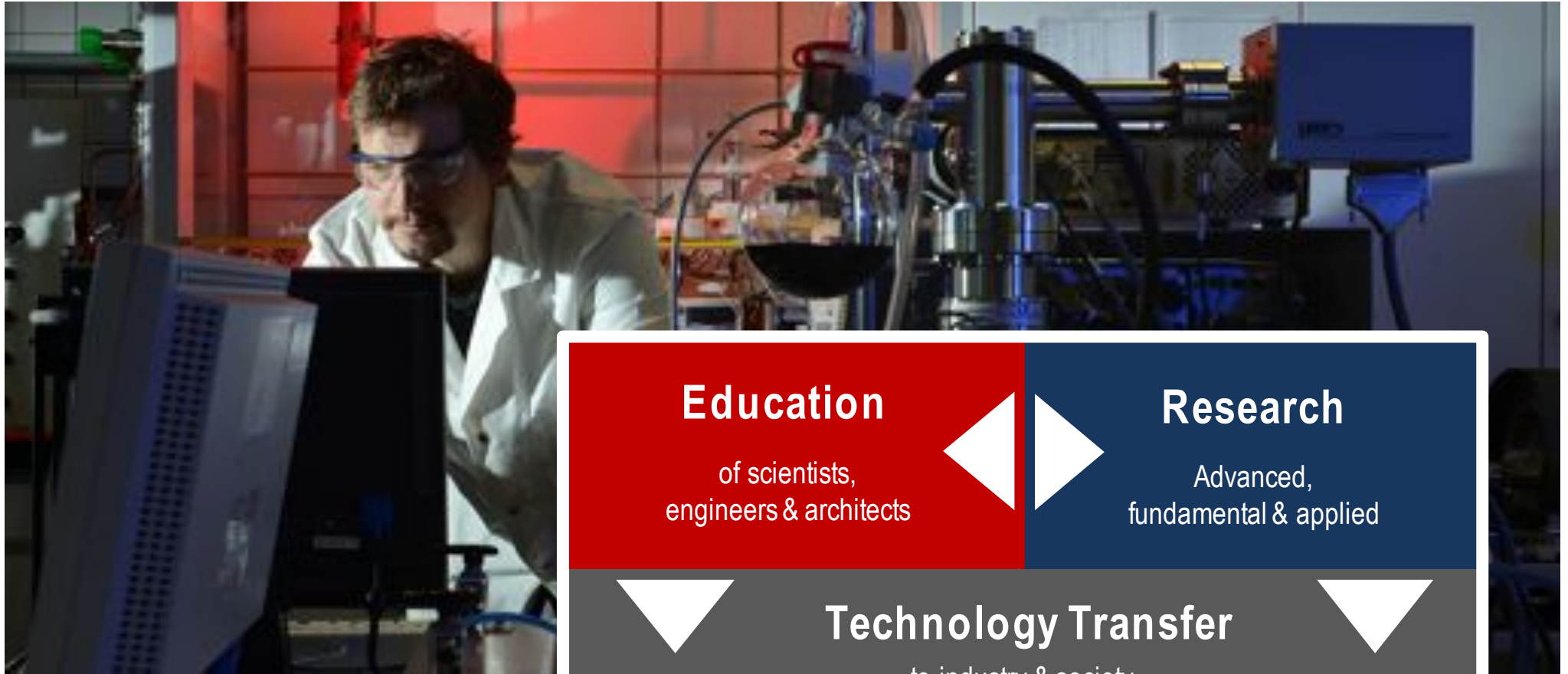
CHF 251M other funding (EU, SNSF, private...)

Total: CHF 896M





# EPFL's three missions according to the Federal Act



## Education

of scientists,  
engineers & architects

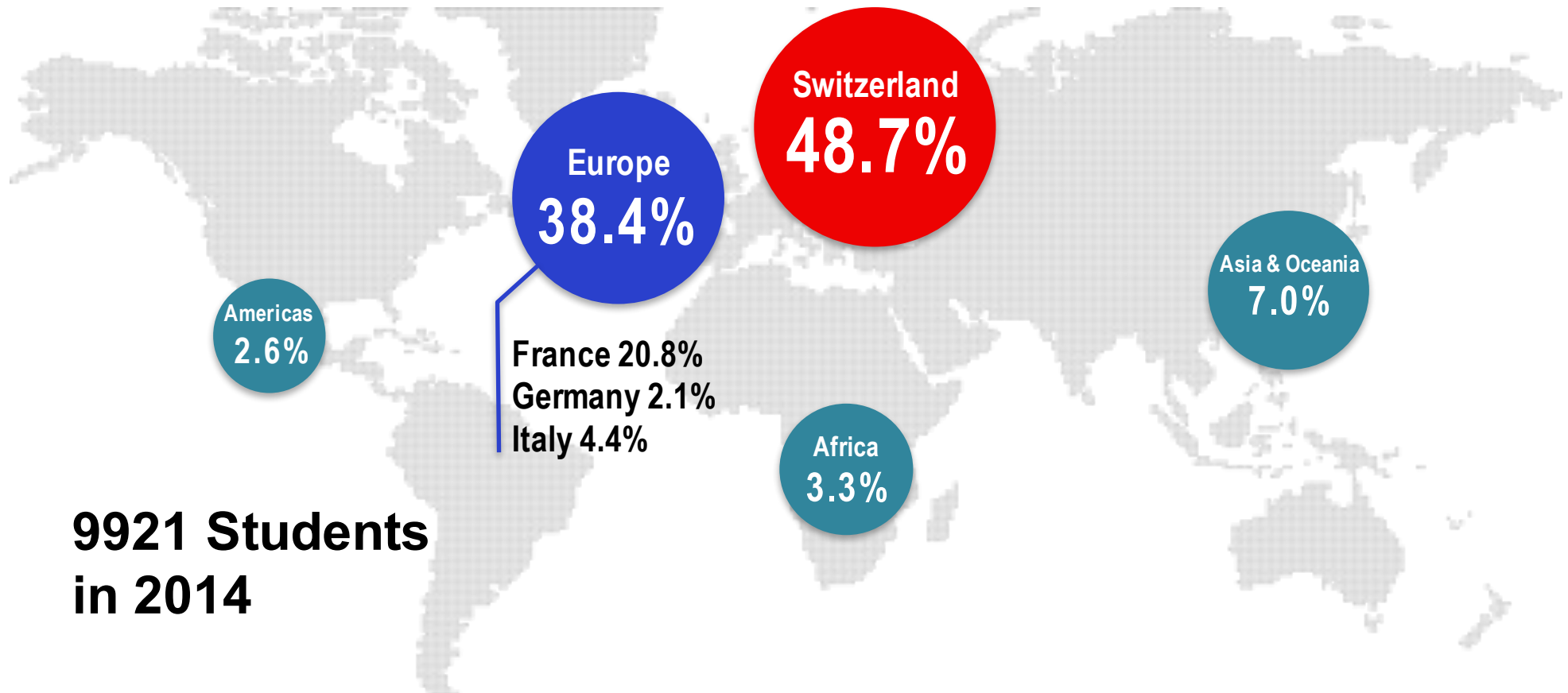
## Research

Advanced,  
fundamental & applied

## Technology Transfer

to industry & society

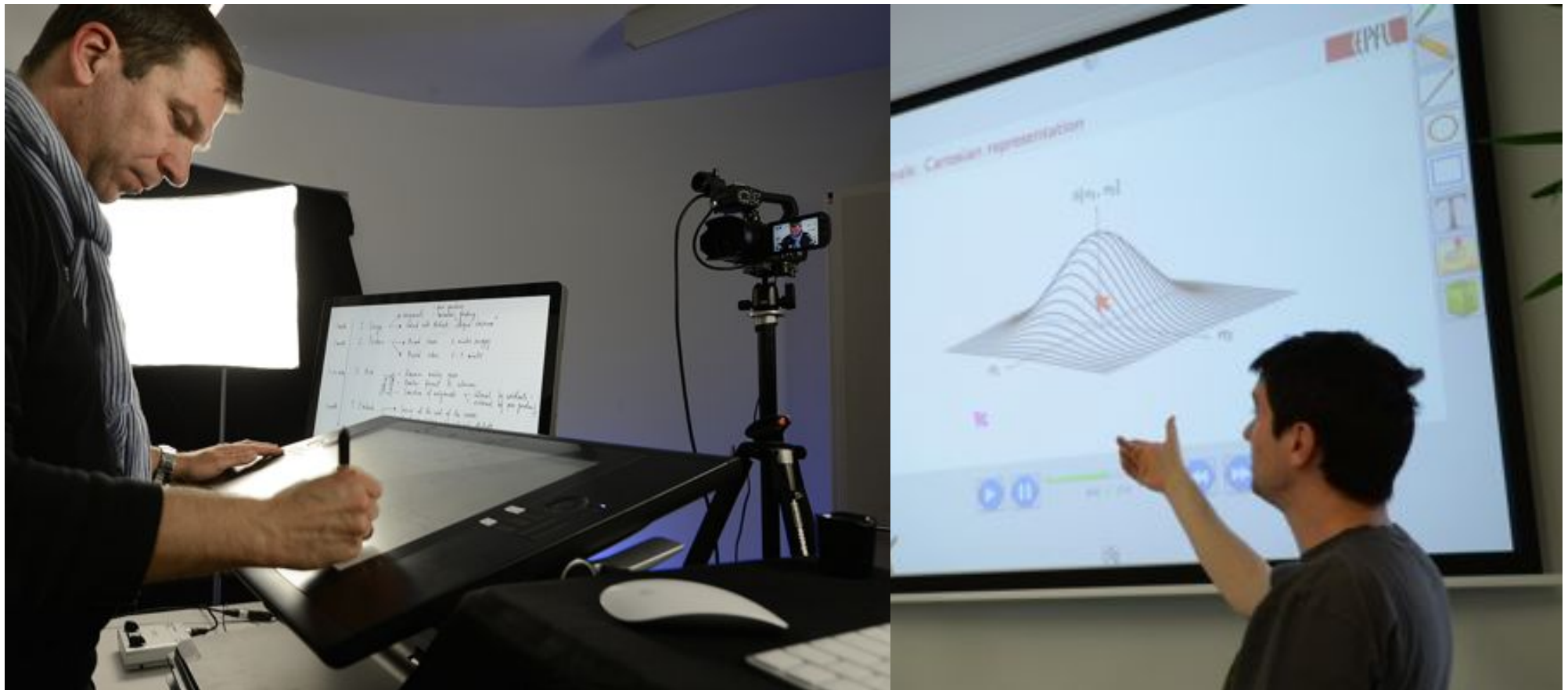
# Origin of Students (Bachelor+Master+PhD)



**9921 Students  
in 2014**

# MOOCs (Massive Open Online Courses)

September 2012 – February 2016 : 1'173'888 registered participants in 186 countries  
58'077 users passed EPFL MOOCs with statement of accomplishment



# Rankings 2015

THE under 50: 1<sup>er</sup>



EPFL: best young university in the world

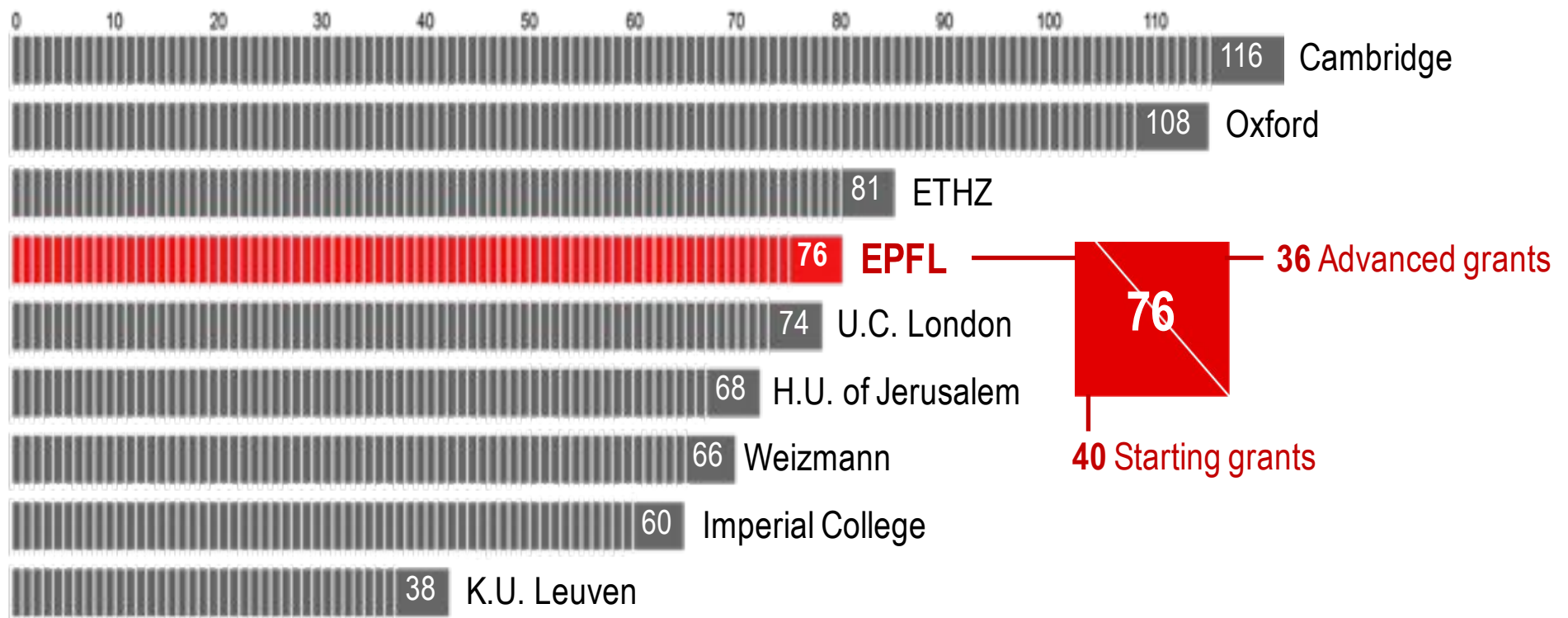
## EUROPE

## MONDE

QS	Eng. & Technology	5	Eng. & Technology	17
	Global performance	6		14
THE (2014)	Eng. & Technology	5	Eng. & Technology	12
	Global performance	8		34
Shanghai	Eng./Tech. & Computer Science	3	Eng./Tech. & Computer Science	14
	Global performance	37		103
Leiden	PP (top-10%) indicator	2	PP (top-10%) indicator	15

# European Recognition - ERC Grants (European Research Council)

## EPFL 4<sup>th</sup> in Europe, cumulative data for 2007-2013

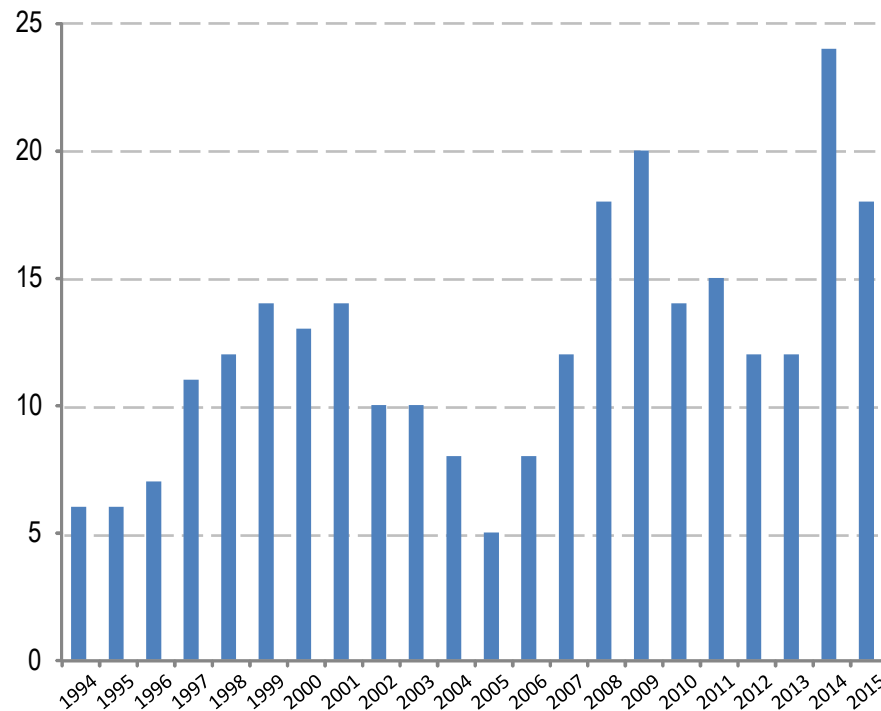




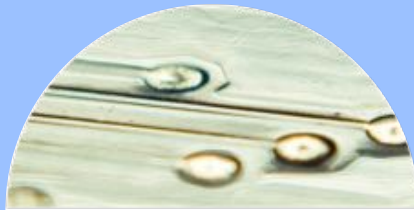
# Development of EPFL start-up

217 start-up

created between 2000 and 2015

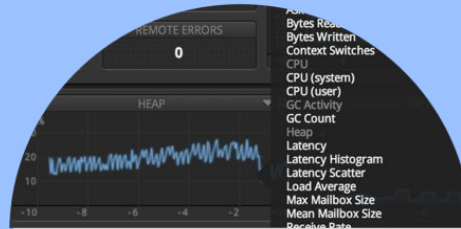


# A culture of start-ups – a few EPFL success stories



## KANDOU TECHNOLOGIES

Ultra-fast electronic buses  
**\$10M** from private investors  
Founded in 2011



## TYPESAFE

Scala Language used by Twitter,  
**\$21M** since May 2011 with US VCs  
Founded in 2010



## ALEVA

Electrodes for neurosurgery  
Raised **CHF14M** with Swiss  
Venture Capital  
Founded in 2008



## SIRI

EPFL Licence,  
Acquisition by Apple in May 2011  
Founded in 2008 in Silicon Valley



## NEXTHINK

Software for businesses  
More than **CHF16M** with Swiss and French VCs  
More than 60 employees  
Founded in 2004



## SENSIMED

Active lenses for glaucoma prevention  
Raised **CHF45M** with Swiss & German VCs  
Founded in 2003

# EPFL Innovation Park

INFORMATION TECHNOLOGY  
FINANCE  
COMPUTING



HEALTH  
NUTRITION



ENGINEERING, TRANSPORT,  
MATERIALS



... and over 110 start-ups





# Big Data and Digital Science



# Challenges for Universities

---

## Education

*Digital revolution in education:* massive open online courses (MOOCs), data-driven education

*Educating for the Digital Revolution:* new profiles needed: Data Scientists, Digital Medicine, Cyber-Security etc.

## Research

*Big Data for Research (data-driven science):* affecting all disciplines (Humanities, Health, Environment)

*Research for Big Data:* cloud computing, machine learning, cyber-security

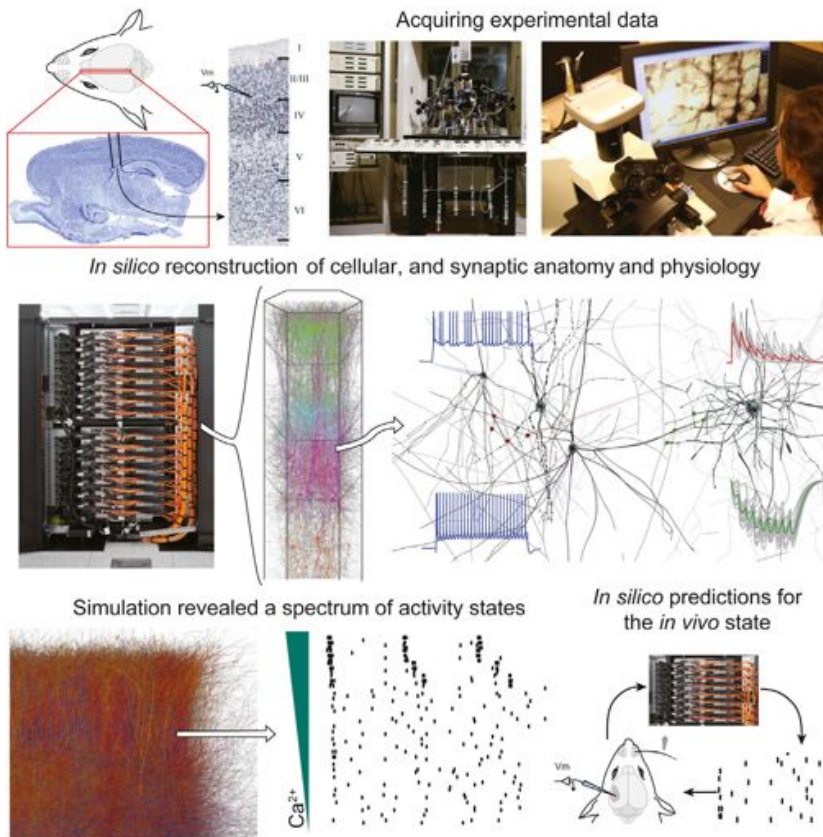
## Impact

## Needs

# Strategic Projects in Data-Driven Science

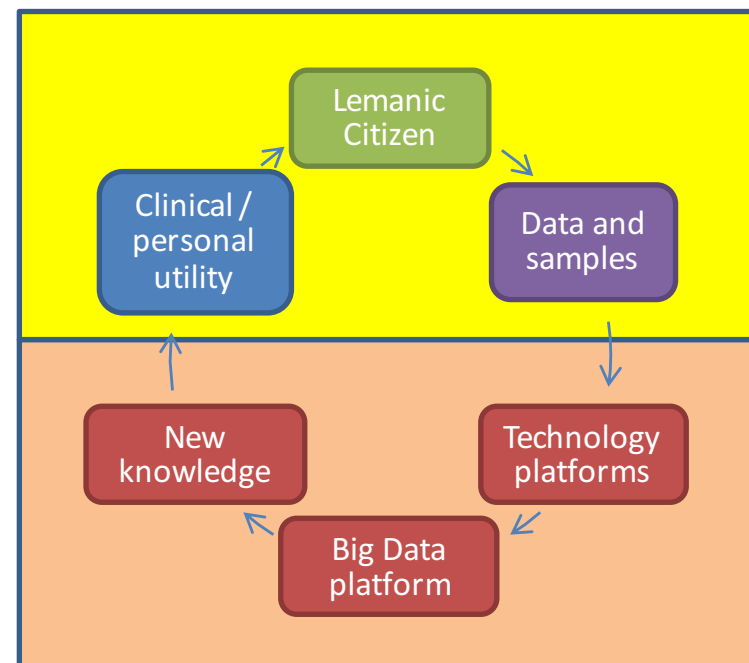
## Human Brain Project

- EU FET Flagship project
- 1 billion € budget
- Consortium: 400 researchers, 113 institutions from 24 countries



## Health 2030: The Lemanic Center for Personalized and Digital Health

- Sequencing 10'000 genomes
- Combine with factors influencing personal health: from environment to media
- Data-driven clinical research and personalized health care
- Important privacy problems with medical and genomic data



# Research for Big Data



## EcoCloud Research Center on Energy-efficient Cloud Computing

- **Mission**

- Holistic approach to **Green-IT**
- Mobile phone energy efficiency in Datacenters!
- Maximizing value from data
- 16 faculty, 50 researchers
- \$3M/year budget

**Microsoft**

**EAT•N**

*Powering Business Worldwide*



**swisscom**

**CREDIT SUISSE**

**ORACLE®**

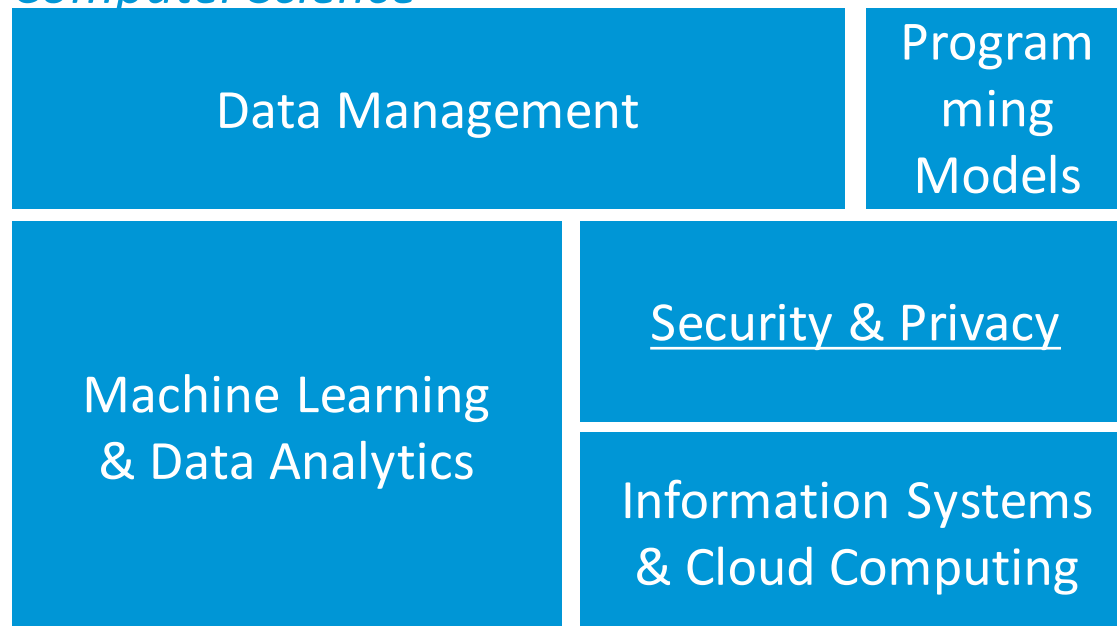
# Swiss Data Science Center

---

## Initiative of the ETH Board

- Support for developing digital science in different research disciplines
- 60 Mio investment for 2017- 2020
- Data science education at master level

### *Computer Science*



### *Mathematics*





# Enjoy the Conference and the Campus!

