

Projet Oronte: Gestion des ressources en eau / Bassin versant

e-Atlas of the Orontes basin



Quelques enjeux importants

- Surexploitation des eaux
- Changement climatique
- Démographie
- Question transfrontalière

- many results of the first phase
- dispersed data sets and knowledge
- identified management issues

- Climatic scenarios
- Hydro(geo)logical hypotheses
- Management scenarios

The Atlas ?

to be developed as...

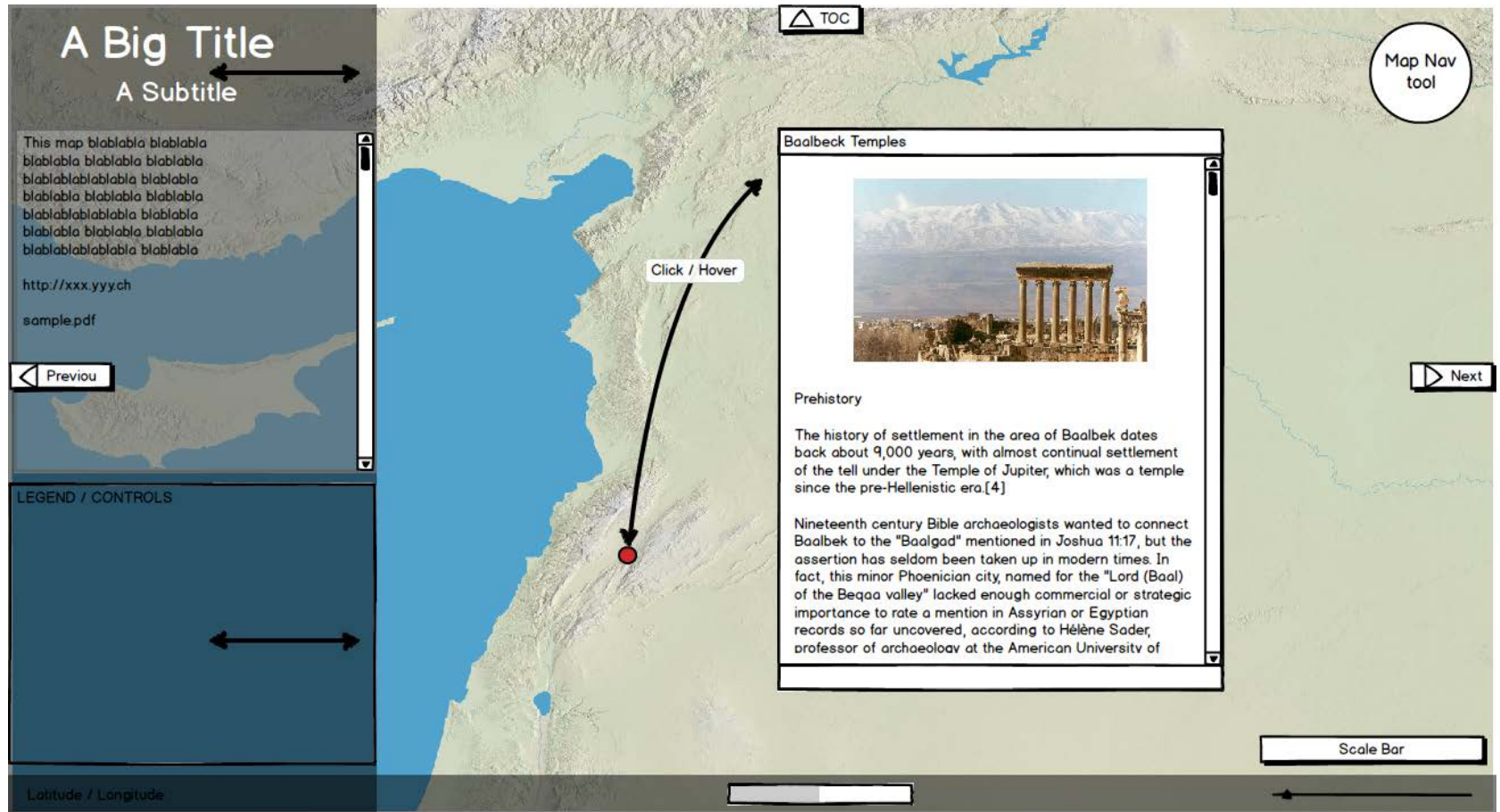
Systemic model of the Oronte River (« schema »)

- subcomponents
 - segments
 - surface / groundwater
 - quantity / quality
- interdependancies
- uncertainties
 - climate
 - measurements
 - socio-political situation

- Visualizing data
- exploring data
- publishing data

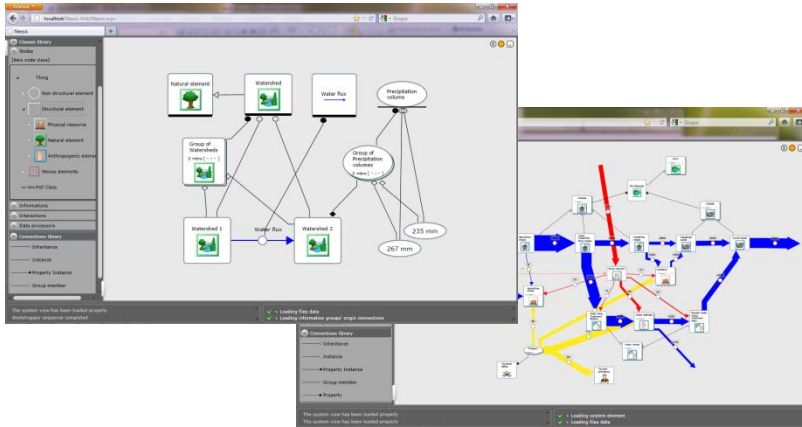
- Scientific conclusions → what might happen ?
- Recommendations → what might be done ?
 - monitoring needs ...
 - further investigations...

Interface de base...



... à compléter avec d'autres interfaces de visualisation

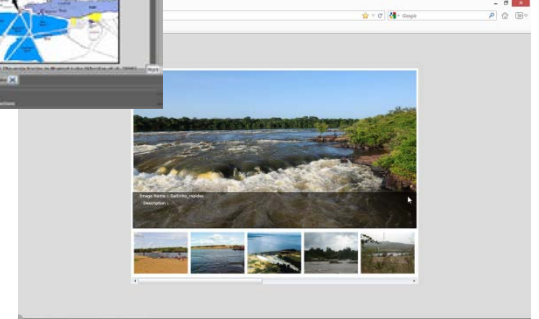
Représentations schématiques



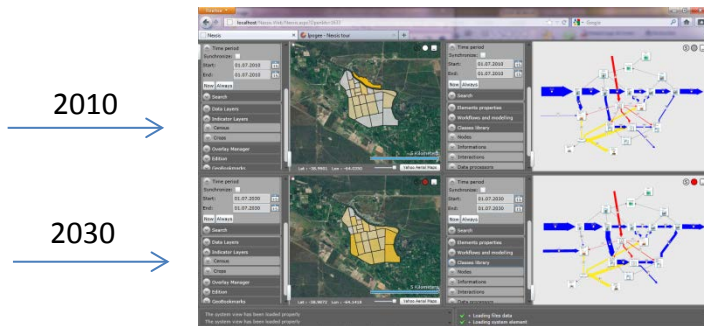
Représentations composites



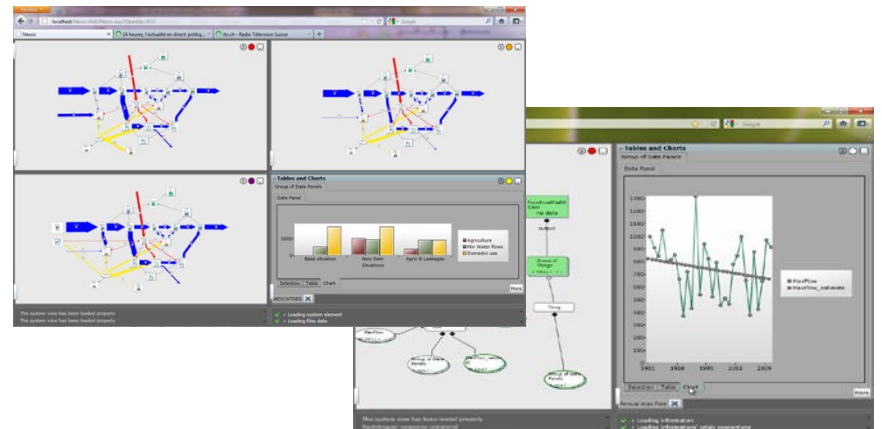
Albums



Représentations diachroniques



Définition et évaluation de scénarios



C'est tout..., merci !

Firefox localhost/Nexis.Web/Nexis.aspx

Nexis

Classes library

Nodes

[New node class]

- Thing
 - Non-structural element
 - Structural element
 - Physical resource
 - Natural element
 - Anthropogenic element
 - Nexis elements

no data Poll Class

Informations

Interactions

Data processors

Connections library

- Inheritance
- Instance
- Property Instance
- Group member

The system view has been loaded properly
Bootstrapper sequence completed

- + Loading files data
- + Loading information groups' origin connections

The diagram illustrates a conceptual model with the following elements and relationships:

- Classes Library:**
 - Thing
 - Non-structural element
 - Structural element
 - Physical resource
 - Natural element
 - Anthropogenic element
 - Nexis elements

- no data Poll Class
- Informations
- Interactions
- Data processors
- Connections library
- Inheritance
- Instance
- Property Instance
- Group member

The main diagram shows the following relationships:

- Natural element** (represented by a tree icon) is a subclass of **Watershed** (represented by a landscape icon).
- Watershed** is a superclass of **Watershed 1** and **Watershed 2**.
- Water flux** (represented by a box with a blue arrow) is a relationship between **Watershed 1** and **Watershed 2**.
- Precipitation volume** (represented by an oval) is a relationship between **Watershed 1** and **Watershed 2**.
- Group of Watersheds** (represented by a box with a landscape icon and "2 mbrs [- : -]") is a group containing **Watershed 1** and **Watershed 2**.
- Group of Precipitation volumes** (represented by an oval with "2 mbrs [- : -]") is a group containing **267 mm** and **235 mm**.