

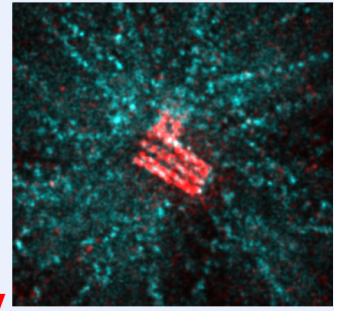
PhD or Post-doctoral position

**Centriole fate during zebrafish
muscle formation**

Gönczy laboratory

**Swiss Federal Institute of Technology
(EPFL)**

Lausanne, Switzerland



We invite an outstanding PhD or post-doctoral candidate to join our vibrant international team of scientists to push the boundaries of knowledge in cell and developmental biology. In this project, in collaboration with the lab of Andy Oates, you will use live imaging to monitor the fate –and uncover the function- of centrioles and centrosomes during zebrafish muscle formation, and complement this approach with human iPSC cells.

The Gönczy lab uses functional genomics, cell biology, biophysics, chemical biology and cryo-electron microscopy to uncover cellular principles and molecular mechanisms underlying centriole biology and asymmetric cell division. More information about our work can be found at <https://www.epfl.ch/labs/gonczy-lab/>.

If you are creative, driven, trained in the life sciences or an allied field, including computational biology or physics, please send your application, including a motivation letter and the name of three referees to pierre.gonczy@epfl.ch. PhD candidates will also apply through the doctoral program.

The EPFL School of Life Sciences is an interdisciplinary research community that fosters interactions with other disciplines on campus, including Engineering, Physics, Chemistry and Computer Sciences (see www.epfl.ch for more information).

