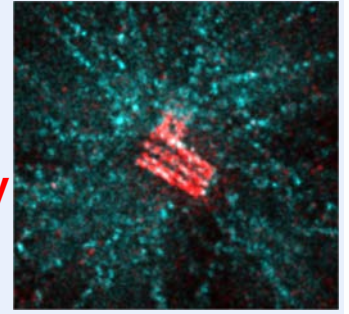


Post-doctoral or PhD position

**Gönczy laboratory
Swiss Federal Institute of Technology
(EPFL)
Lausanne, Switzerland**



We invite an outstanding post-doctoral or PhD candidate to join our vibrant international team of scientists to push the boundaries of knowledge in centriole biology. The centriole organelle is critical for forming cilia and exhibits a signature nine-fold radial symmetric arrangement of microtubules. We discovered components that are essential for centriole assembly across evolution. We deploy a multidisciplinary approach, including functional genomics, cell biology, biophysics, chemical biology and cryo-electron microscopy to uncover the principles by which these components govern organelle biogenesis and function in diverse systems. More information about our work and research interests can be found at <https://www.epfl.ch/labs/gonczy-lab/>.

If you are creative, driven, trained in cell and developmental biology or an allied field such as chemistry, computational biology or physics, and would like to help solving long standing questions in cell and developmental biology, please send your application, including a motivation letter and the name of three referees to pierre.gonczy@epfl.ch. PhD candidates will also apply through the doctoral program.

The EPFL School of Life Sciences is an interdisciplinary research community that fosters interactions with other disciplines on campus, including Engineering, Physics, Chemistry and Computer Sciences (see www.epfl.ch for more information). English is the working language and salaries are competitive.

