



2024-2025 / sem I

2023-2024 / sem I

A matter of gender: Women's Centre in South Sudan

Paolo TOMBESI, Riccardo VANNUCCI

The atelier is devoted to a Women's Centre in South Sudan.

A region affected by chronic poverty and political instability, sub-Saharan Africa is also exposed to climate change and its social and environmental consequences. The studio will thus be used as an opportunity to reflect on architects' ability to provide responses to extreme situations and remote contexts at social, environmental, and economic level.

The functional programme includes an outpatient clinic focusing on women's health (maternity preparation, reproductive health, gender-based violence) and training and education activities.

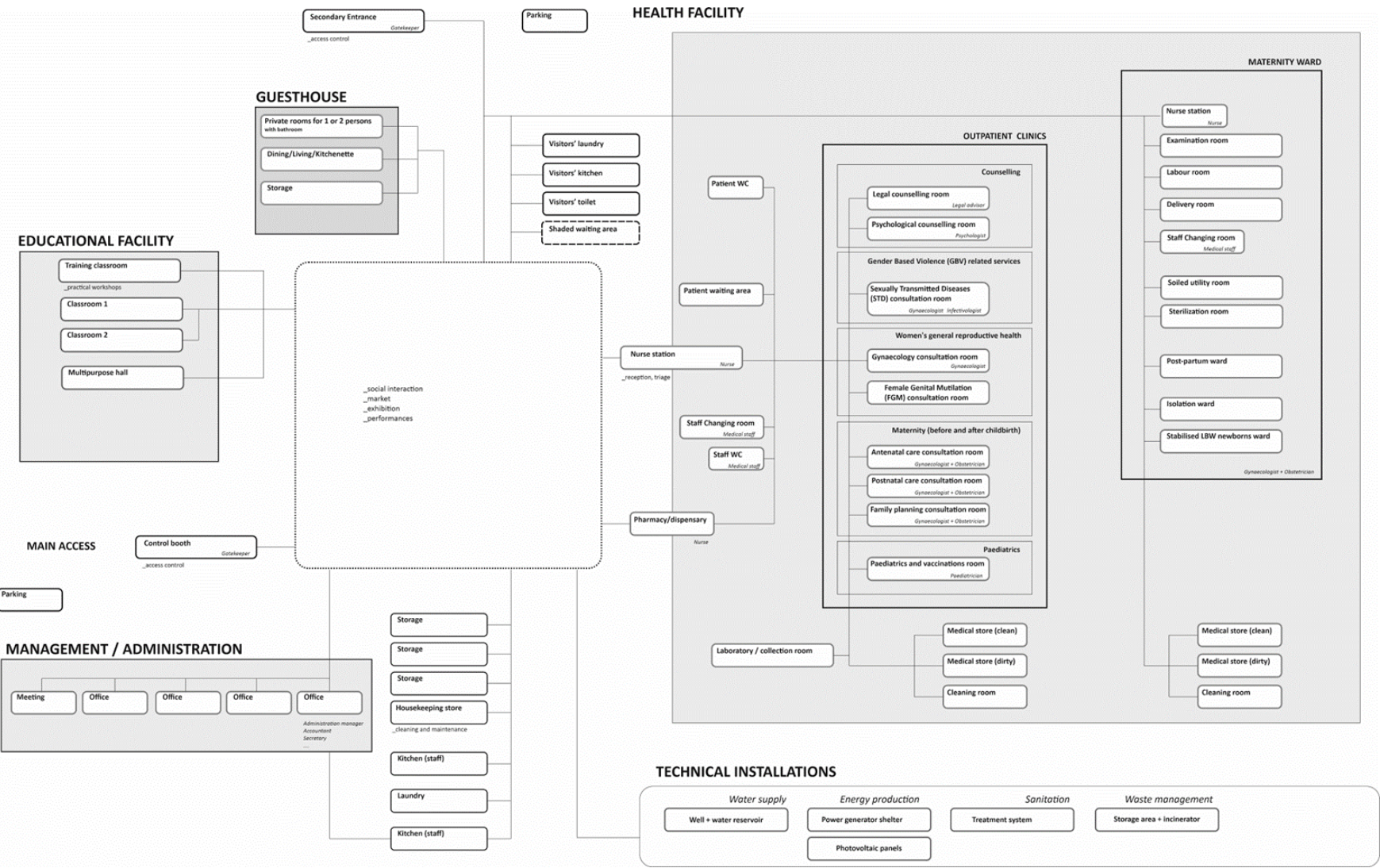
The exercise is placed in a real context and is intended as centred on the relationship between ethical commitment and the limits of disciplinary/professional instrumentation, in circumstances that are, by definition, foreign, and remote, not only geographically, from the student's reality.

The student is actively confronted with many of the issues central to the debate today, not only architectural: responsible use of resources, inclusiveness, impact of climate change, participation, transcultural relations. The close relationship with reality implies the need to measure, literally, the project in terms of economic feasibility and overall sustainability.

FAR FROM HOME

FAR



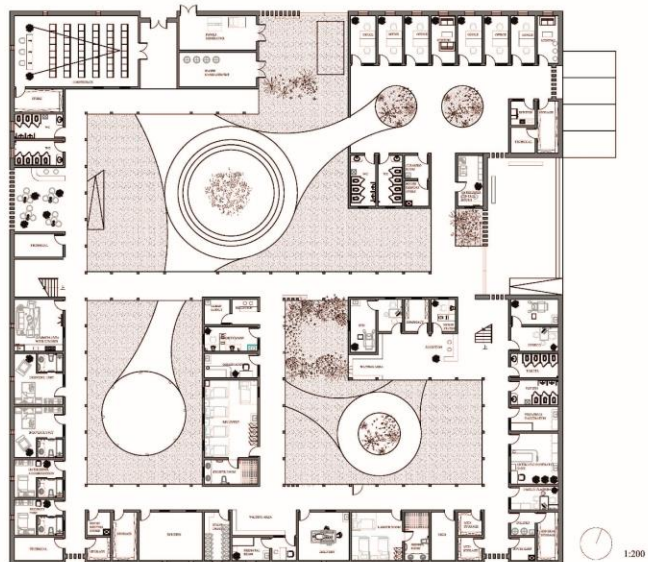
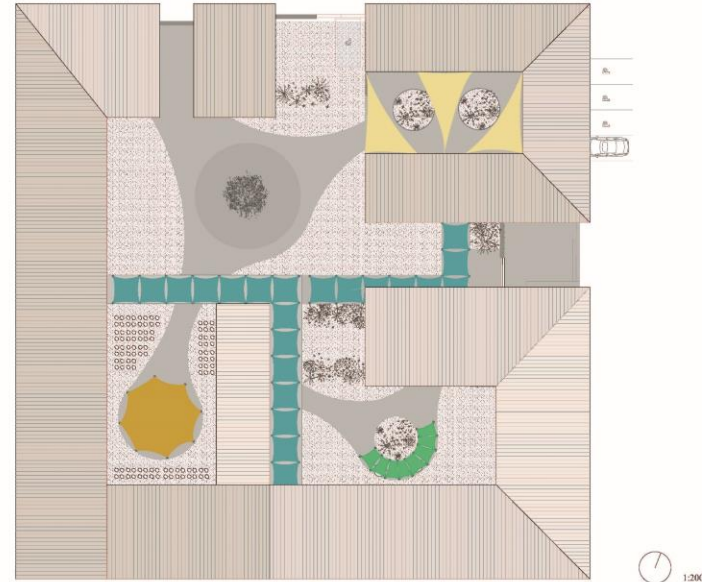


projets

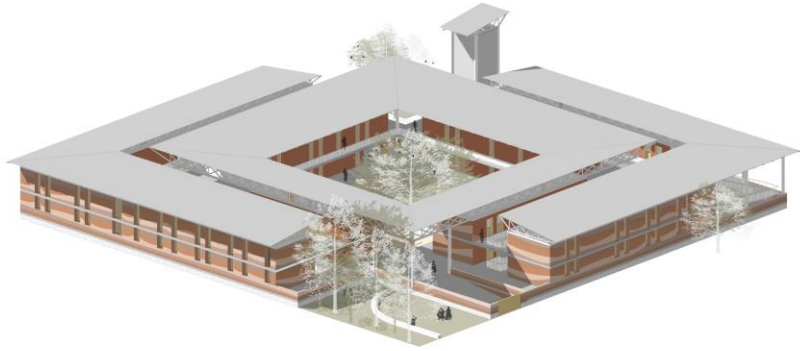
SITE PLAN



A matter of gender: Women's Centre in South Sudan



ICONOLOGY



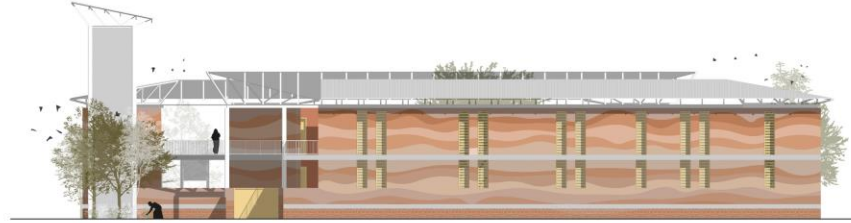
Axonometry : 1/250

02a

A matter of gender: Women's Centre in South Sudan



Façade East: 1/150



Façade West : 1/150

02b



Section BB': 1/150



Section AA': 1/150



02c

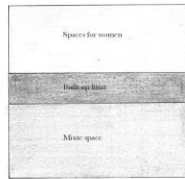


Façade South : 1/150

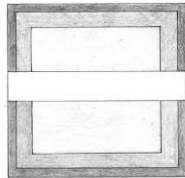


Façade North : 1/150

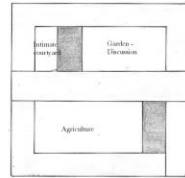
02d



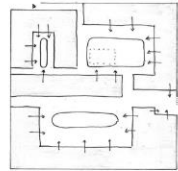
Materialising the separation



Muraille de service

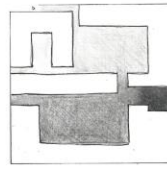


Prioritising courses



Community

The layout of the buildings makes it possible to create several courtyards, towards which the interiors are oriented. In this way, the courtyard structure the circulation. There is always a view of and access to these outdoor spaces.

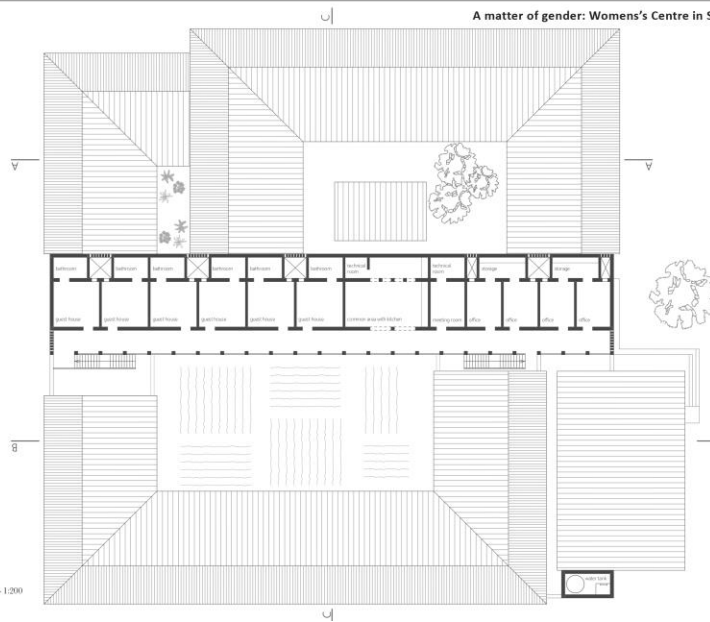


Security

This diagram represents the feeling of safety experienced by the user of the centre. From the darkest to the lightest, from the most public to the most private/intimate, the centre functions as a graduation of the feeling of safety throughout the journey.

01a

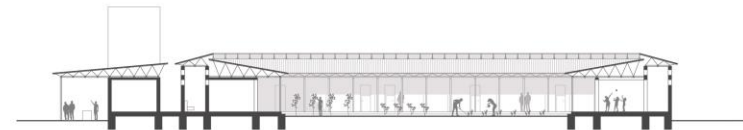
First Floor Plan - 1/200



01b



Coupe A-A 1/200

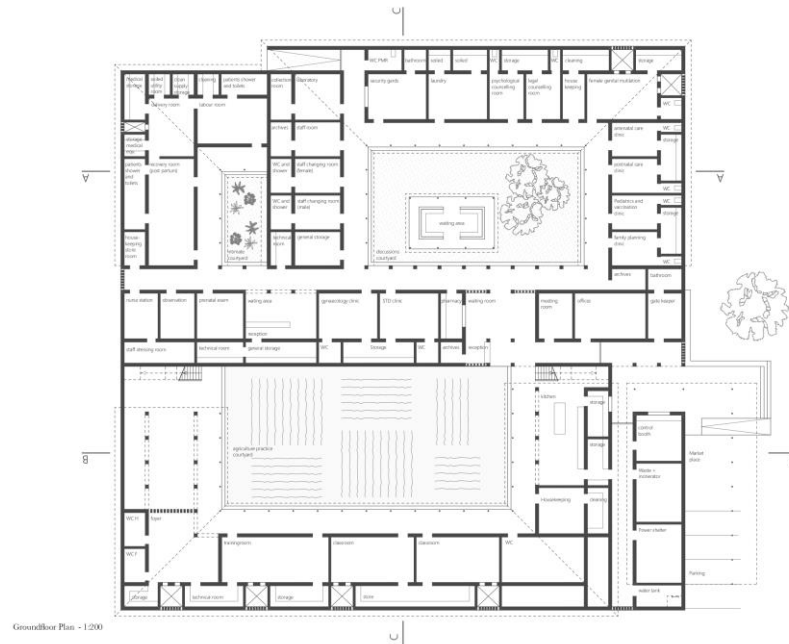


Coupe B-B 1/200



Coupe C-C 1/200

01c



Groundfloor Plan - 1/200

01d