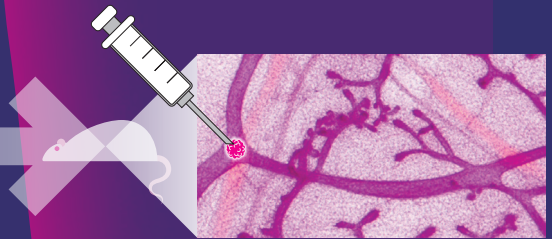


# Preclinical and Personalized Breast Cancer Research

Workshop: October 10<sup>th</sup>-12<sup>th</sup> 2022  
EPFL, Lausanne, Switzerland



There is an urgent need to use more relevant preclinical models for translation of breast cancer research, drug development, and assessment of personalized response to treatment. In particular, for hormone receptor positive breast cancers, experimental and preclinical models are poor. This 3 days workshop teaches how breast cancer can be studied using intraductal xenografts, which recapitulate to a large extent the human disease in its many forms (Sflomos George et al., 2016 Cancer Cell, Fiche Maryse et al., 2019 Journal of Pathology, Scabia Valentina et al., 2022 Nat Com.). The course provides practical demonstrations and hands-on sessions, complemented by seminars from international experts.

Director: Cathrin Brisken

#### External Speakers:

Fariba Behbod, University of Kansas Medical Center  
Isabelle Desbaillets, Head of the Animal Welfare Office, Bern  
Julia Schueler, Charles River-Freiburg  
Khalil Zaman, Breast Center, Lausanne University Hospital (CHUV)  
Maryse Fiche, International Cancer Prevention Institute (ICPI)  
Patrick Aouad, Jules Gonin Eye Hospital, University of Lausanne (UNIL)  
Richard Iggo, University of Bordeaux, France

Tutors: Andrea Agnoletto, Ayyakkannu Ayyanan, Daria Matvienko, George Sflomos, Giovanna Ambrosini, Hazel Quinn, Laura Battista, Maryse Fiche and Yueyun Zhang

Program and Registration: <https://www.epfl.ch/labs/brisken-lab/PreclinicalModelCourse>

