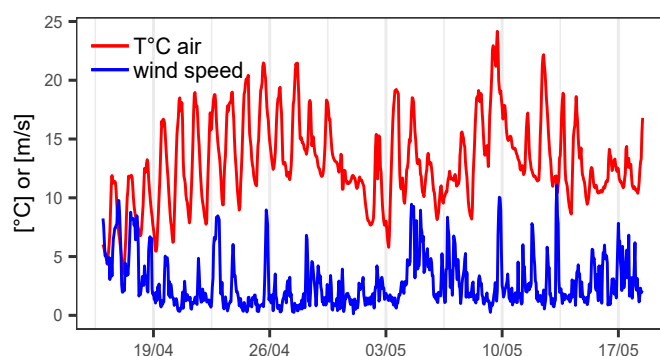
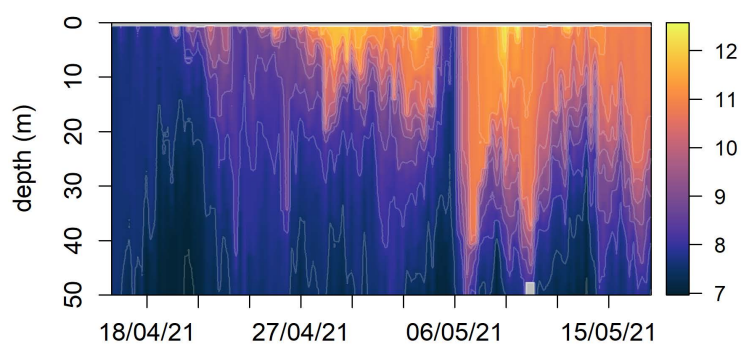


*This is what I have seen*

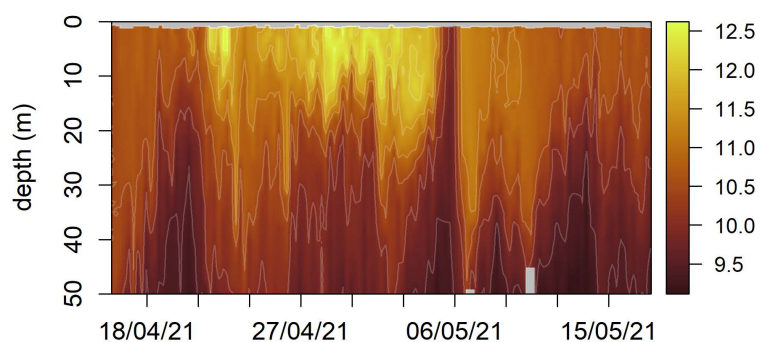
16/04/2021 - 18/05/2021

letter #22

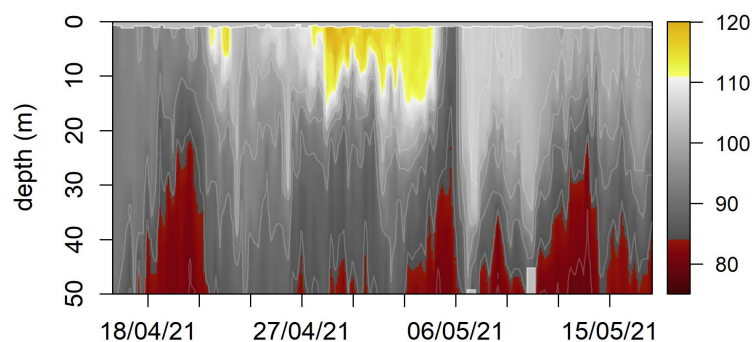
**Temperature** [°C]



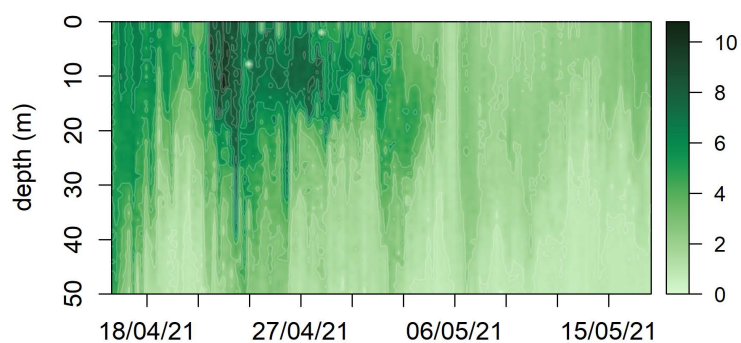
**O2** [mg/L]



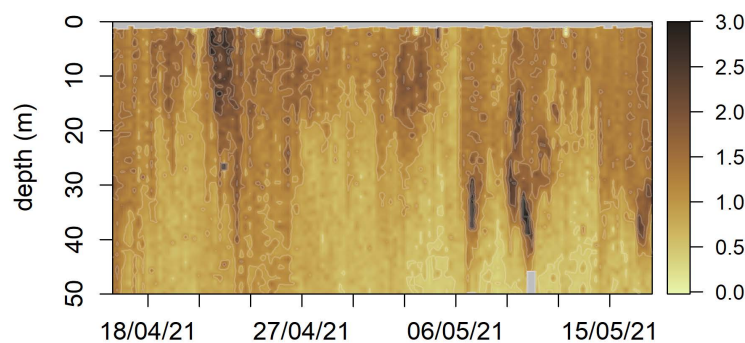
**O2sat** [%]



**Chl.a** [ug/L]



**backscattering (700nm)** [1.e-2 m-1]



**Dear Humans,**

Things change fast. Until 3rd of May, it was warmer, more stratified, greener with more phytoplankton. After the strong mixing/upwelling on May 4th, it's been turbulent, and clearly Chl-a doesn't want to go back up.

the Thetis.