

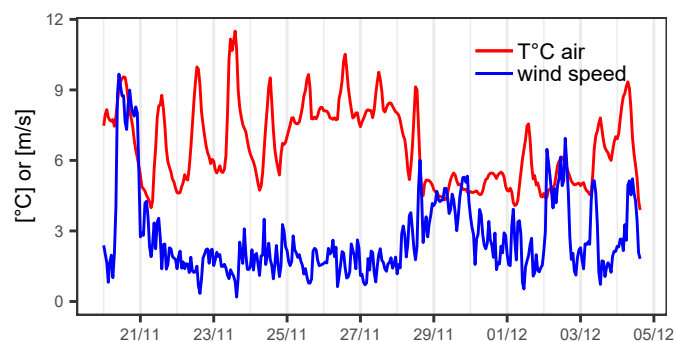
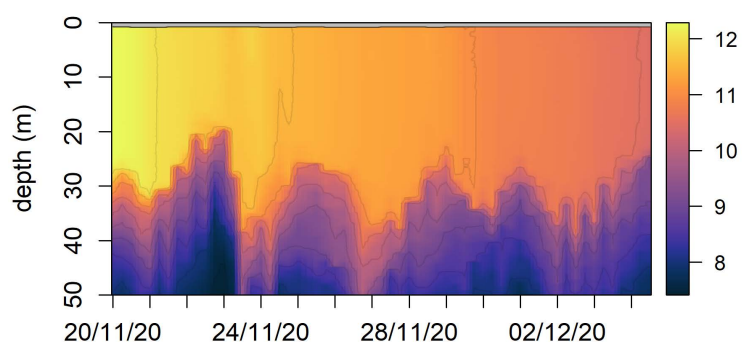
*This is what I have seen*

20/11/2020 - 04/12/2020

letter #20

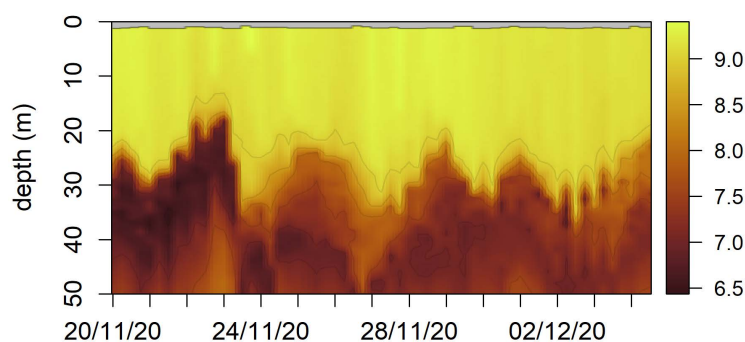
Temperature

[°C]



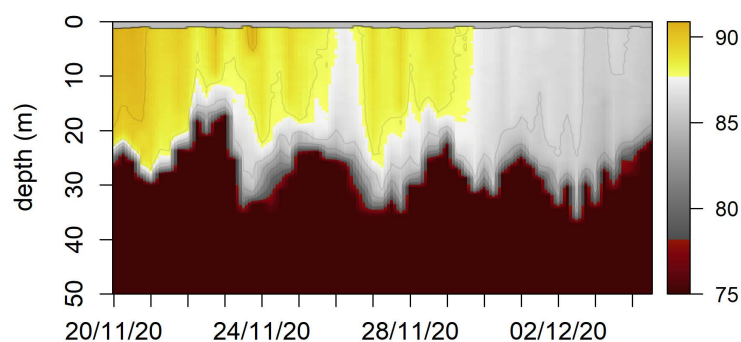
O<sub>2</sub>

[mg/L]



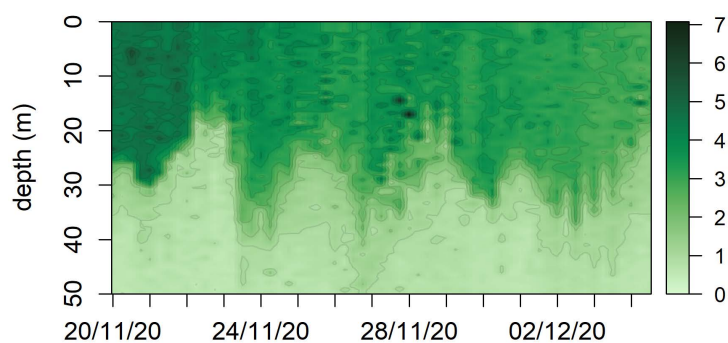
O<sub>2</sub>sat

[%]



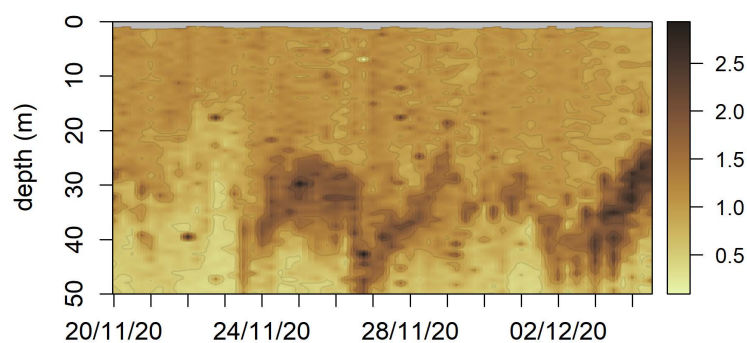
Chl.a

[µg/L]



backscattering (700nm)

[1.e-2 m-1]



**Dear Humans,**

This time it seems this late bloom is fading away.

I'm wondering: could it be accumulated detritus now visible near the thermocline? You know better, I'm just a robot in the end.

the Thetis.