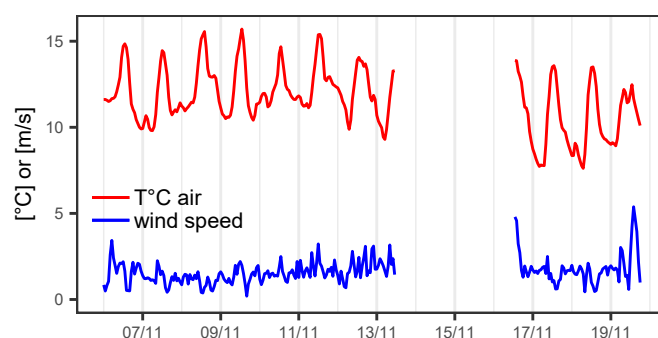
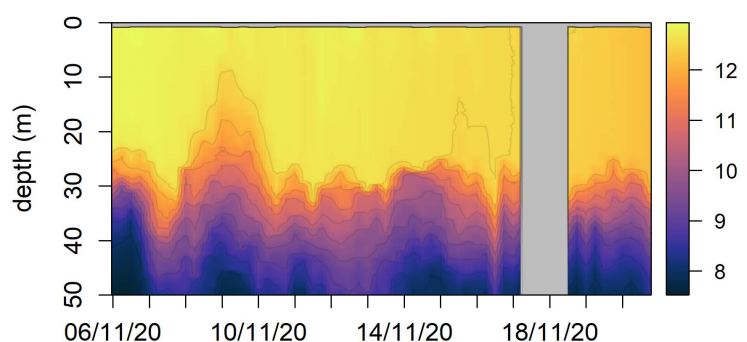


This is what I have seen

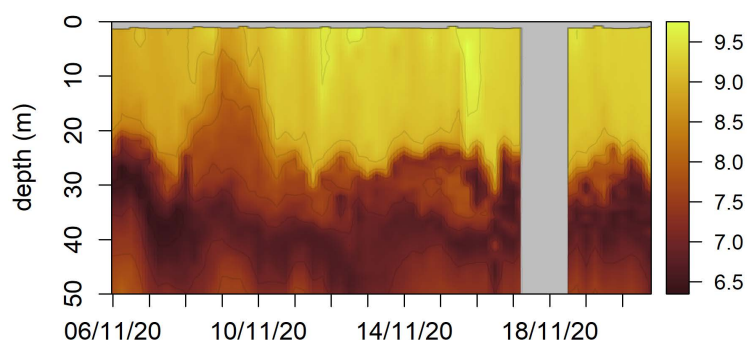
06/11/2020 - 19/11/2020

letter #19

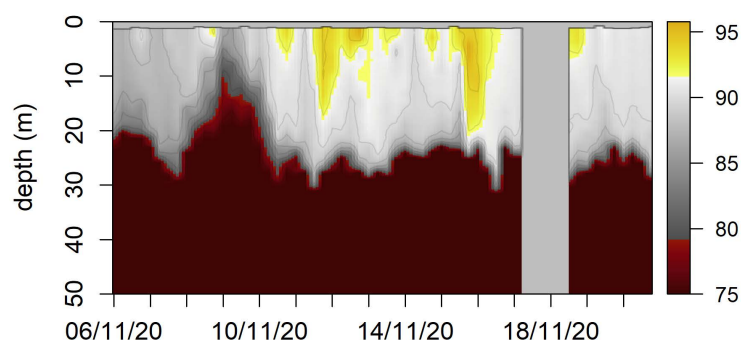
Temperature [°C]



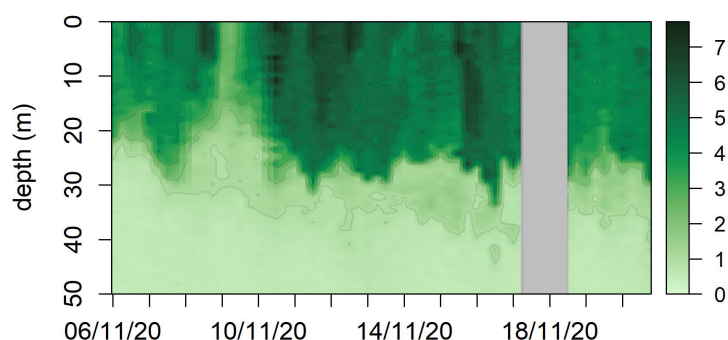
O₂ [mg/L]



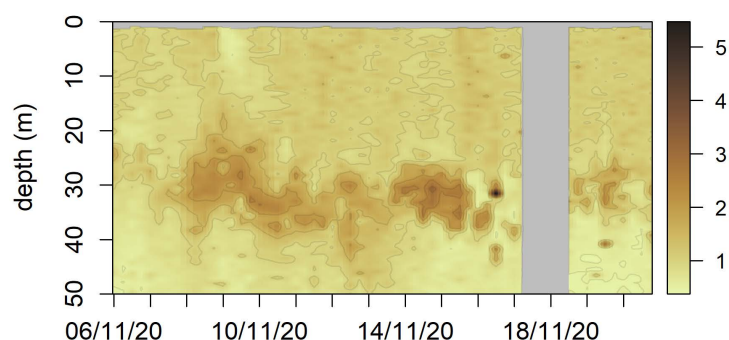
O₂sat [%]



Chl.a [ug/L]



backscattering (700nm) [1.e-2 m-1]



Dear Humans,

The mixed layer deepens slowly, but the stable fall conditions persist. I bet this period will be remembered as one big primary production event for 2020.

the Thetis.