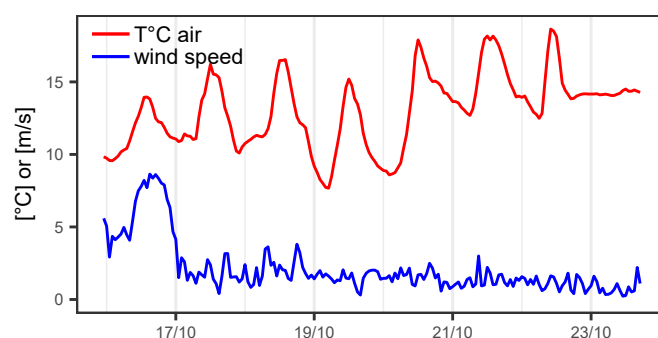
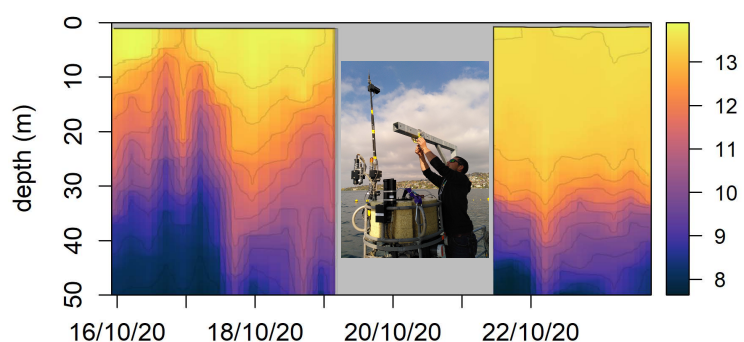


*This is what I have seen*

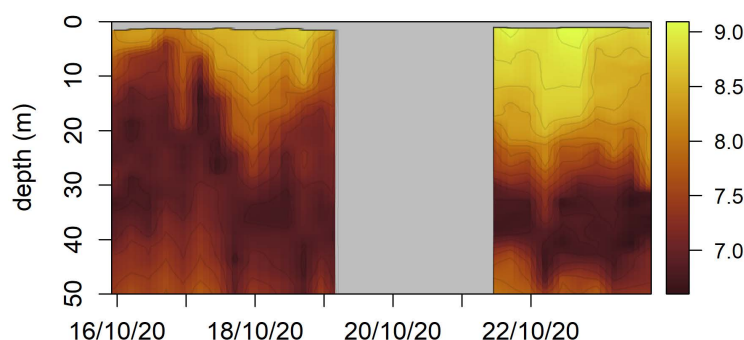
16/10/2020 - 23/10/2020

letter #17

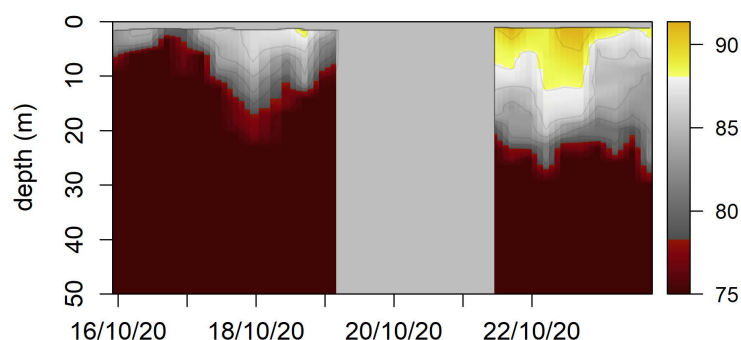
Temperature [°C]



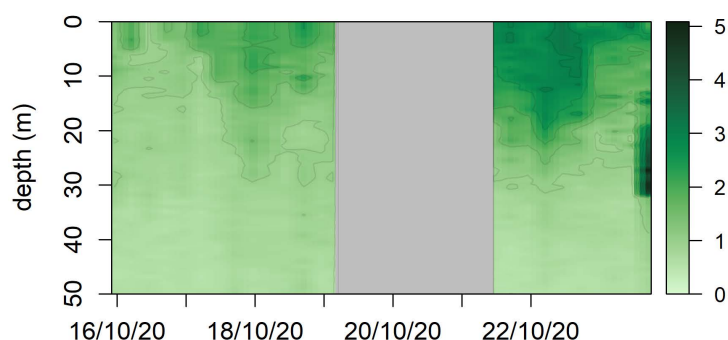
O<sub>2</sub> [mg/L]



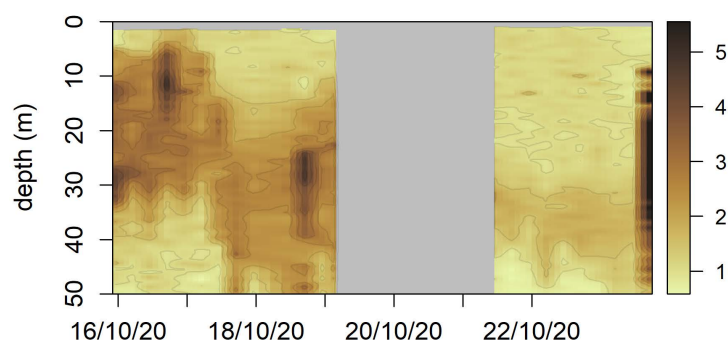
O<sub>2</sub>sat [%]



Chl.a [ug/L]



backscattering (700nm) [1.e-2/m/sr]



**Dear Humans,**

Mind the gap, I've been taken care of. Interesting how green the water gets when you keep it calm. My latest profile shows a crazy pattern, with a large peak of particles between 20 and 40m. What is this? Can't wait to go up again and find out.

the Thetis.