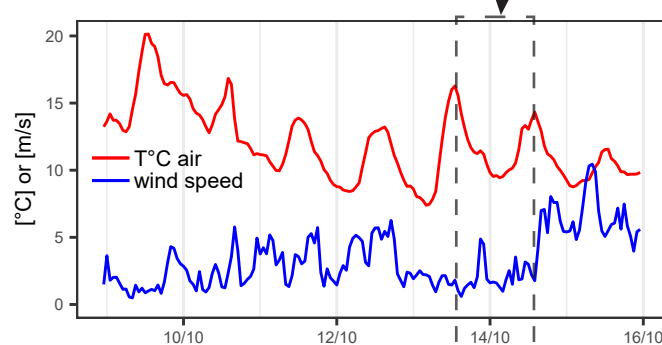
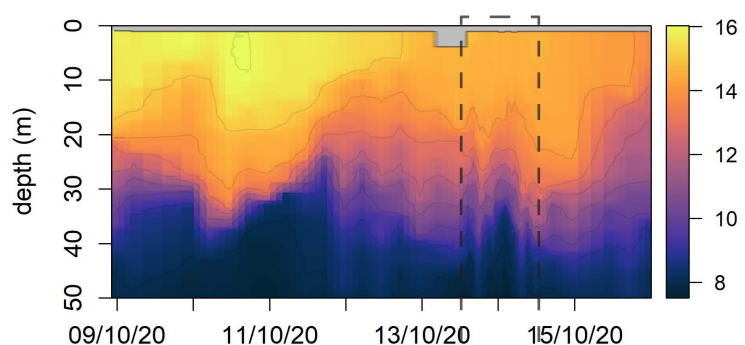


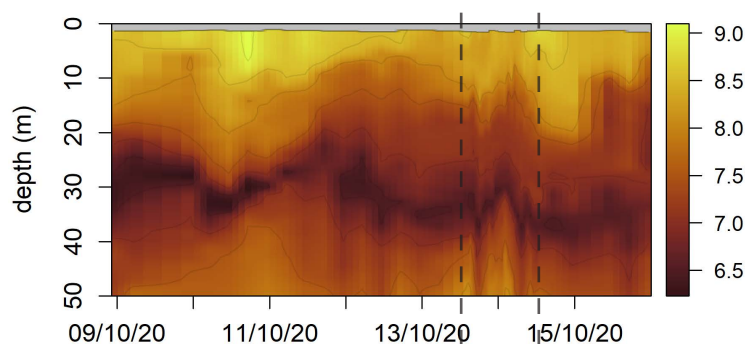


letter #15

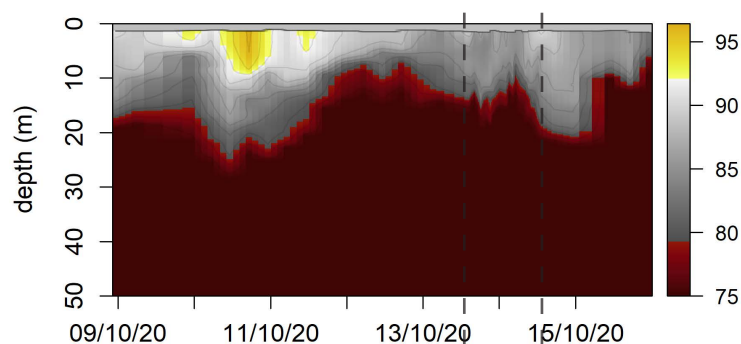
Temperature [°C]



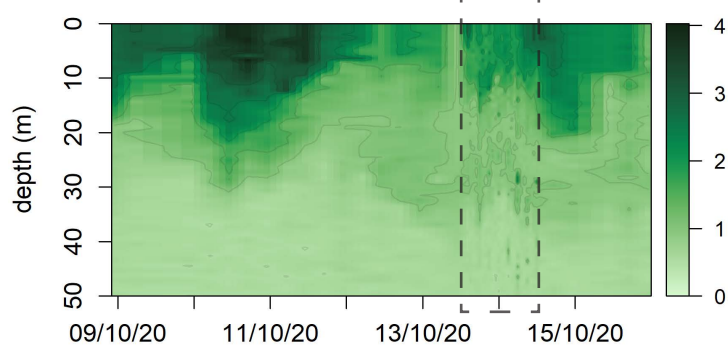
O₂ [mg/L]



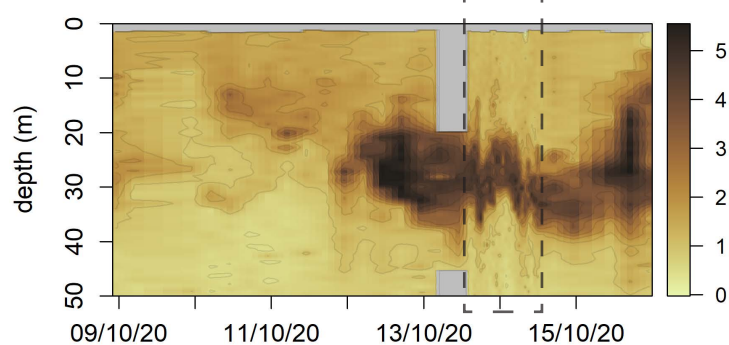
O₂sat [%]



Chl.a [µg/L]



backscattering (700nm) [1.e-2/m/sr]



Dear Humans,

Fall is unstoppable. It's impressive how quickly things may change: look at how dynamic O₂, Chl.a, and b700 can be! I got some company during an intensive overnight sampling on Oct. 13th-14th. I really loved my time with the CO₂ chambers minions, and that brilliant µCTD.

the Thetis.