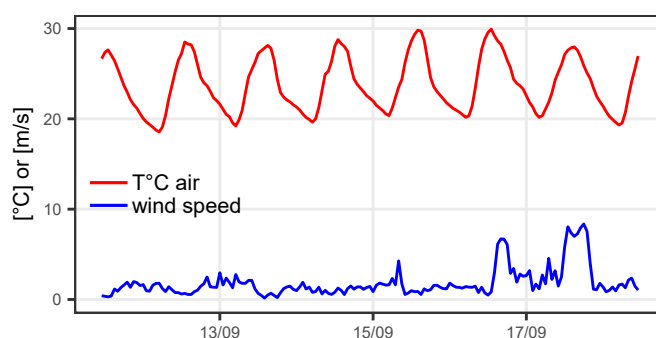
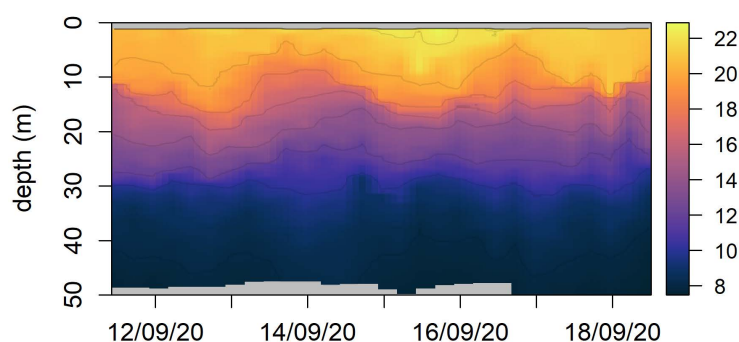


*This is what I have seen*

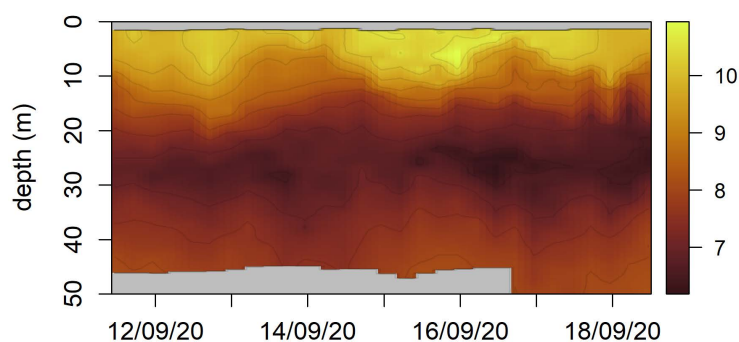
11/09/2020 - 18/09/2020

letter #13

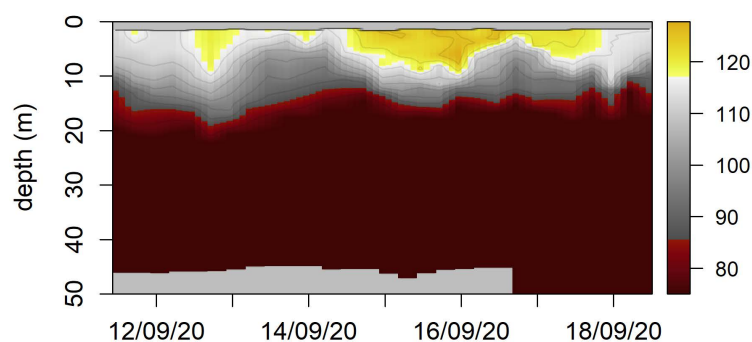
Temperature [°C]



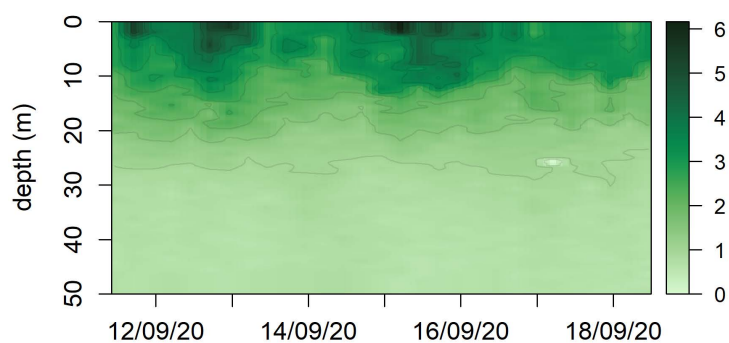
O<sub>2</sub> [mg/L]



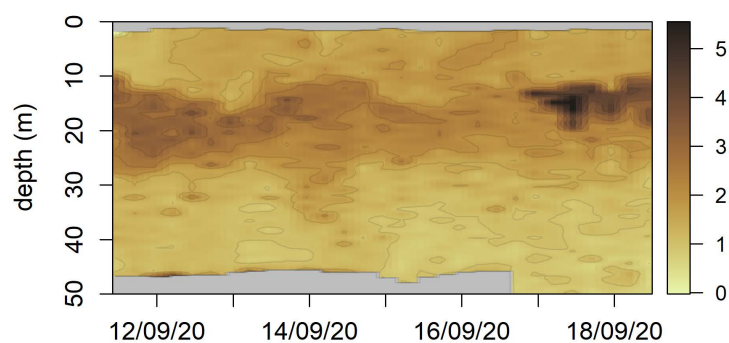
O<sub>2</sub>sat [%]



Chl.a [ug/L]



backscattering (700nm) [1.e-2/m/sr]



**Dear Humans,**

I'm so happy to be back after a summer spent in a very dry place! Internal waves, Chl.a max near the surface, peak of turbidity in the same layer as the minimum in O<sub>2</sub>... There's a lot to interpret here. Some more fun for you, right?

the Thetis.