A map of North America is shown in the background, with several red pushpins placed on it. The pushpins are of various sizes and are scattered across the map, with a concentration in the United States and Canada. The map is slightly blurred, and the pushpins are the primary focus.

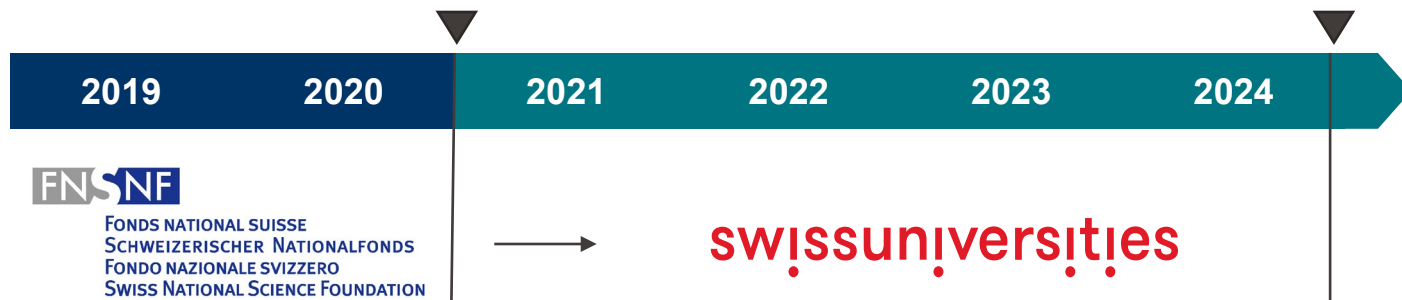
EPFL

Doc.Mobility

Information session

Anikó Borbély
Doctoral School

Programme changes



Coordinated by: SNSF Doc.Mobility

Managed by: SNSF

Funded: SNSF

Swissuniversities

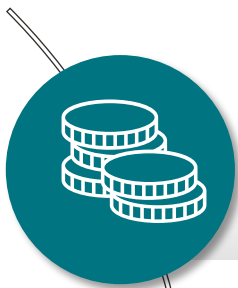
Each university independently

Swissuniversities and EPFL

The EPFL Doc.Mobility scheme will conclude at the end of 2024, until then
3 more calls for applications will be issued.



What is Doc.Mobility?



Grant that offers **financial support** to doctoral students who wish to carry out a research stay abroad in an academic institution



Possibility to **deepen** their **scientific knowledge**, to **develop** their **scientific network** and to **advance** their **doctoral work**



It is granted for a minimum of **6 months** and a maximum of **12 months**. A division into stays of at least 3 months each is possible in exceptional cases and if special reasons are given.



Who can apply?

Doctoral students in all disciplines represented at EPFL provided they meet the following conditions:

- Have been **registered for at least 12 months** as a doctoral student and are **employed at EPFL** at the date of the application deadline
- **Successfully passed the candidacy exam** at the time of the start of the mobility stay
- **Not be in the last 6 months** of their PhD studies
- **Not be funded by** a project of the **SNSF** (Swiss National Research Foundation)
- Be of **Swiss nationality**, have a **valid residence permit** or a valid **cross-border commuter permit**
- To confirm in writing their intention to **continue their doctorate at EPFL** after the mobility stay and to obtain the doctorate there



What is covered?

PhD salary	50% by the grant, 50% by the lab/usual funding source
Travel expenses	1 round trip ticket in Economy
Research expenditure	max. CHF 3'000 per year
Conferences / Congresses / workshop attendance	max. CHF 2'000 per year
Matriculation fee	75% max. CHF 15'000 per year
Familiy allowance	Child: CHF 12'000 per year Partner: CHF 4'000 per year

- The grant does not include a contribution to personal living expenses, such as rent in the host country. These must be covered by the EPFL salary that the doctoral students will continue to receive during their mobility stay.
- Doctoral students will be registered at EPFL during their stay abroad. Their **existing doctoral employment contract at EPFL will remain in force.**
- The mobility stay abroad is **treated as paid leave**
- For the duration of the stay, half of the salary will be covered by the Doc.Mobility grant, **while half needs to continue to be covered by their usual funding source.**
- Doctoral students **remain affiliated to the Swiss social insurance system.** They continue to be insured with the AVS/AI/APG/AC, Pension (Publica), SUVA (accident). **In this way, they can avoid having gaps in their contributions when an insurance case arises.**
- The doctoral school cannot guarantee to doctoral students that their existing employment contract will remain in force and that they will continue to receive a salary **if they have an external contract** i.e., if the salary is not paid by EPFL. In this case, doctoral students must make the necessary arrangements in advance directly with their external employer.



How to apply?

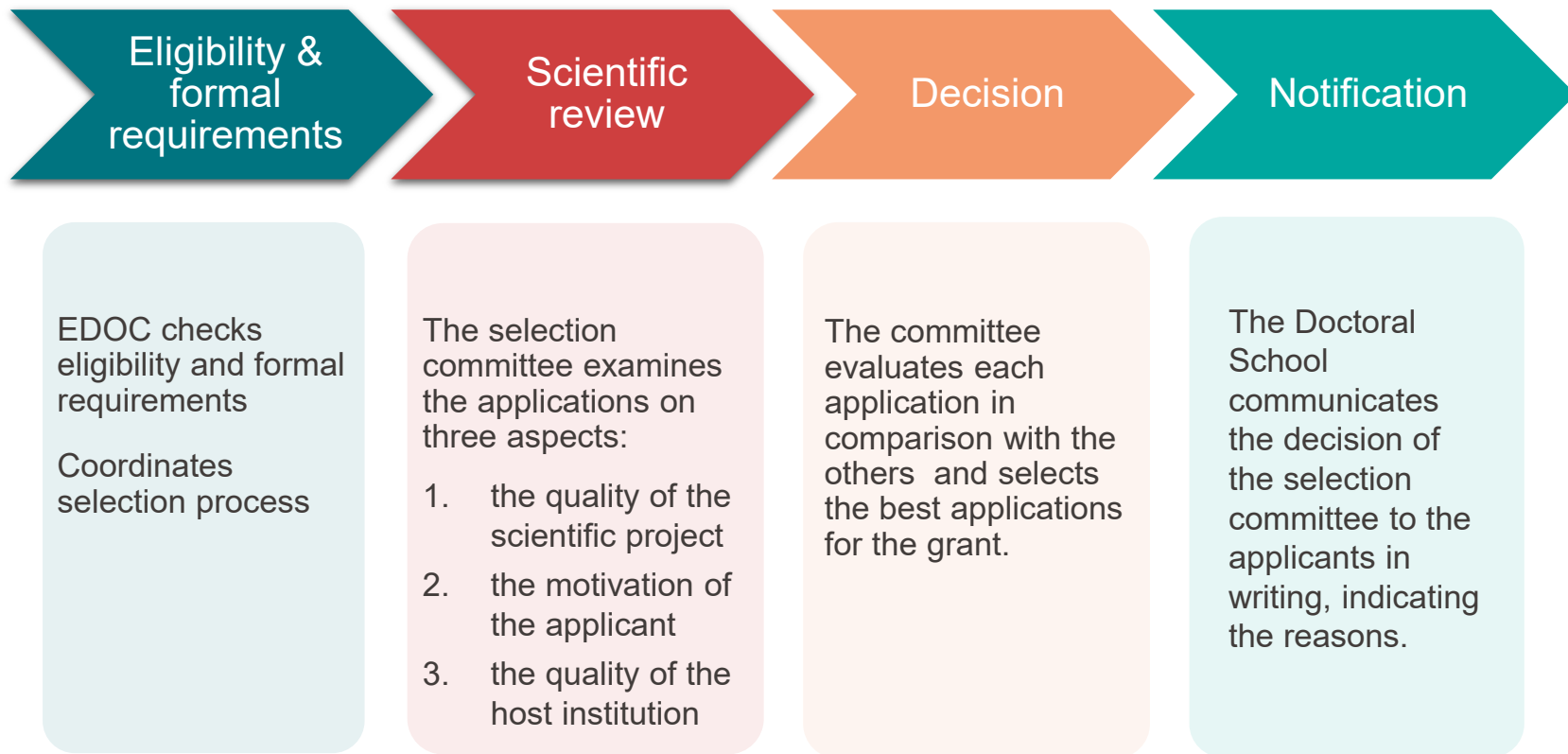
Complete applications must be submitted by doctoral students in electronic format via the dedicated [Google Form](#) by the submission deadline that 1 May 2023.

Applications must contain the following documents:

- a CV of two pages maximum
- the transcript of Doctoral School credits
- a project proposal (using the [template](#) provided)
- a copy of the last salary slip
- a copy of any financial contribution received from other organisations or institutions related to their thesis
- a letter of support (using the templates provided)
 - [by thesis director](#)
 - [by academic host abroad](#)
 - [by academic institution abroad](#)
- Partnership and/or family certificate, if applicable

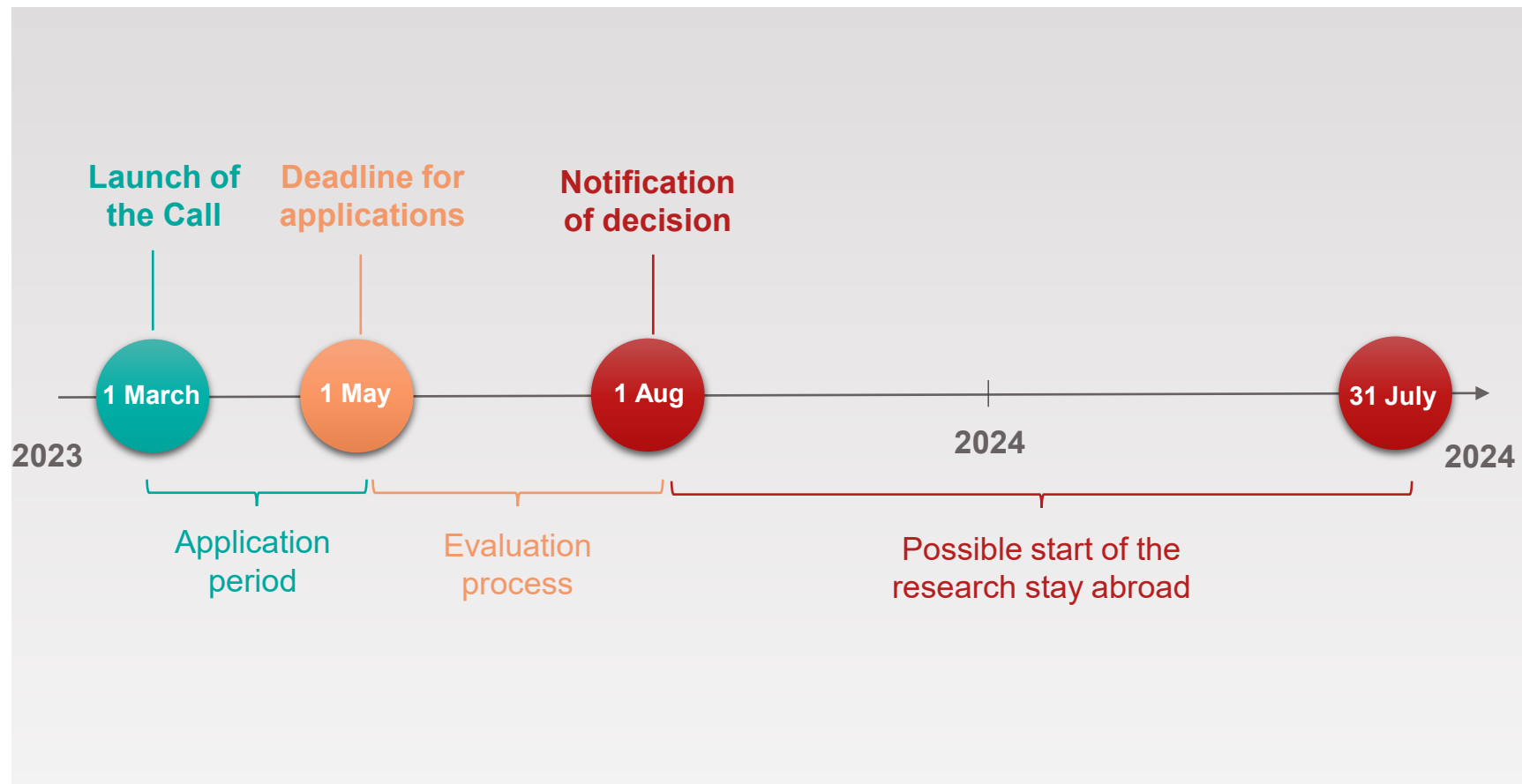


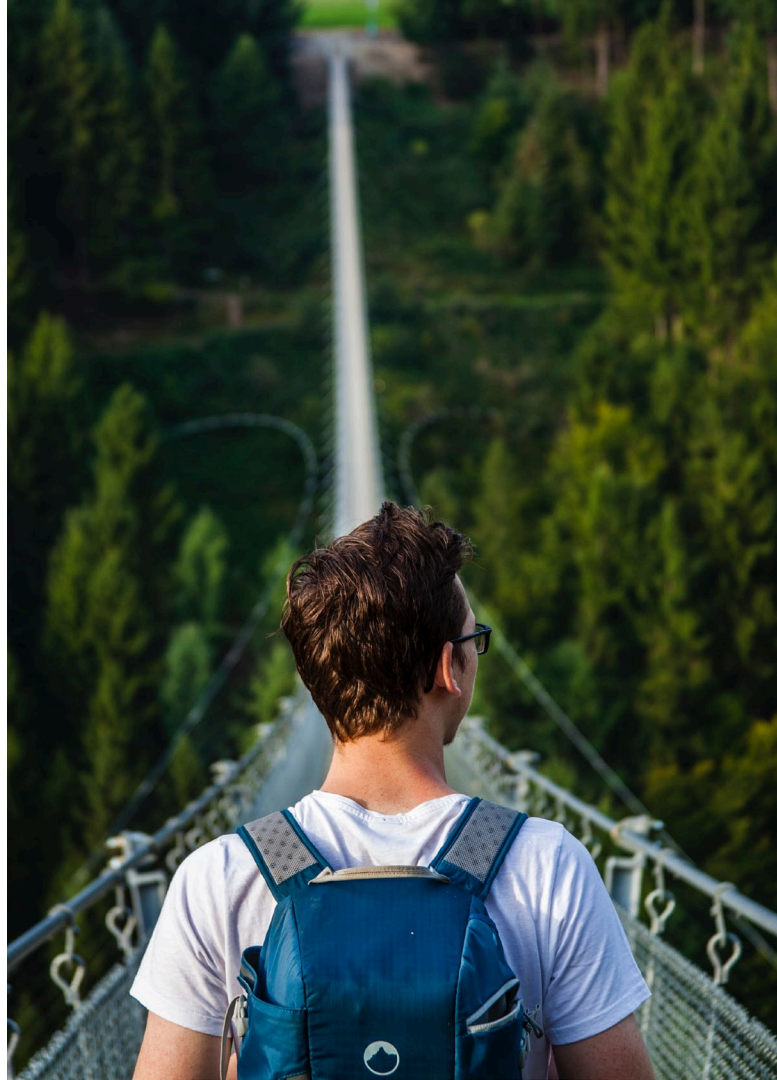
Evaluation process



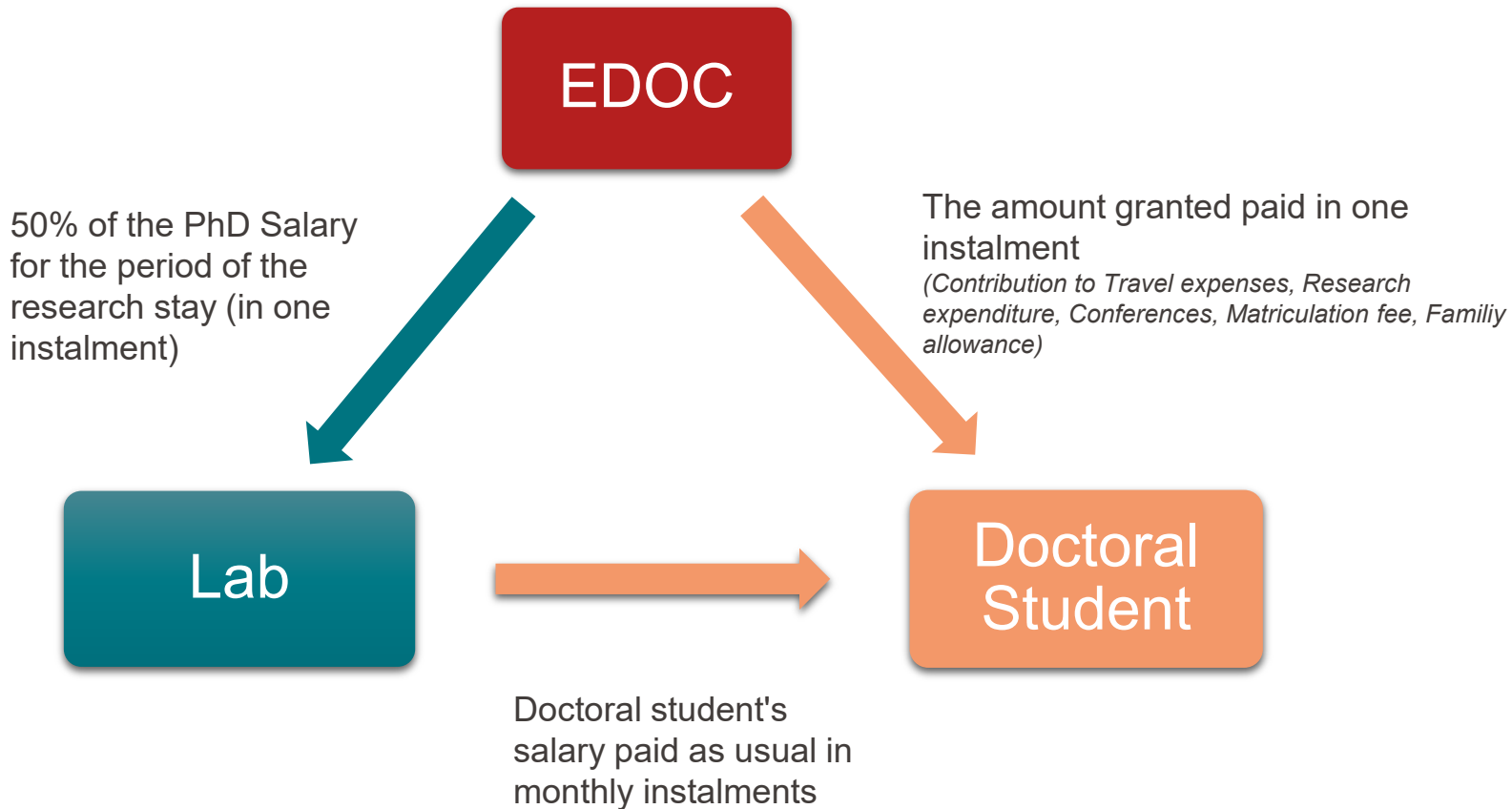


What is the timeline?





How is the grant paid?





Where to find more information?

Doc.Mobility website



For those interested

[Regulations](#)

[FAQ](#)

[Information set](#)



For applicants

[Doc.Mobility Submission Form](#)

[Template – Doc.Mobility Project Proposal Form](#)

[Template – Letter of support from host institution abroad](#)

[Template – Letter of support from Host](#)

[Template – Letter of support from thesis director](#)



For grantees

[Request for release of the EPFL Doc.Mobility grant](#)

[Doc.Mobility Research stay – Final General Report](#)

[Doc.Mobility Research stay – Financial Report](#)

Contact

Doctoral School

Anikó Borbély

gestion.edoc@epfl.ch

aniko.borbely@epfl.ch

+41 21 693 71 85

Monday, Tuesday, Thursday