

Maximum global CO₂-eq emissions per person per year to comply with the Paris Agreement

2T

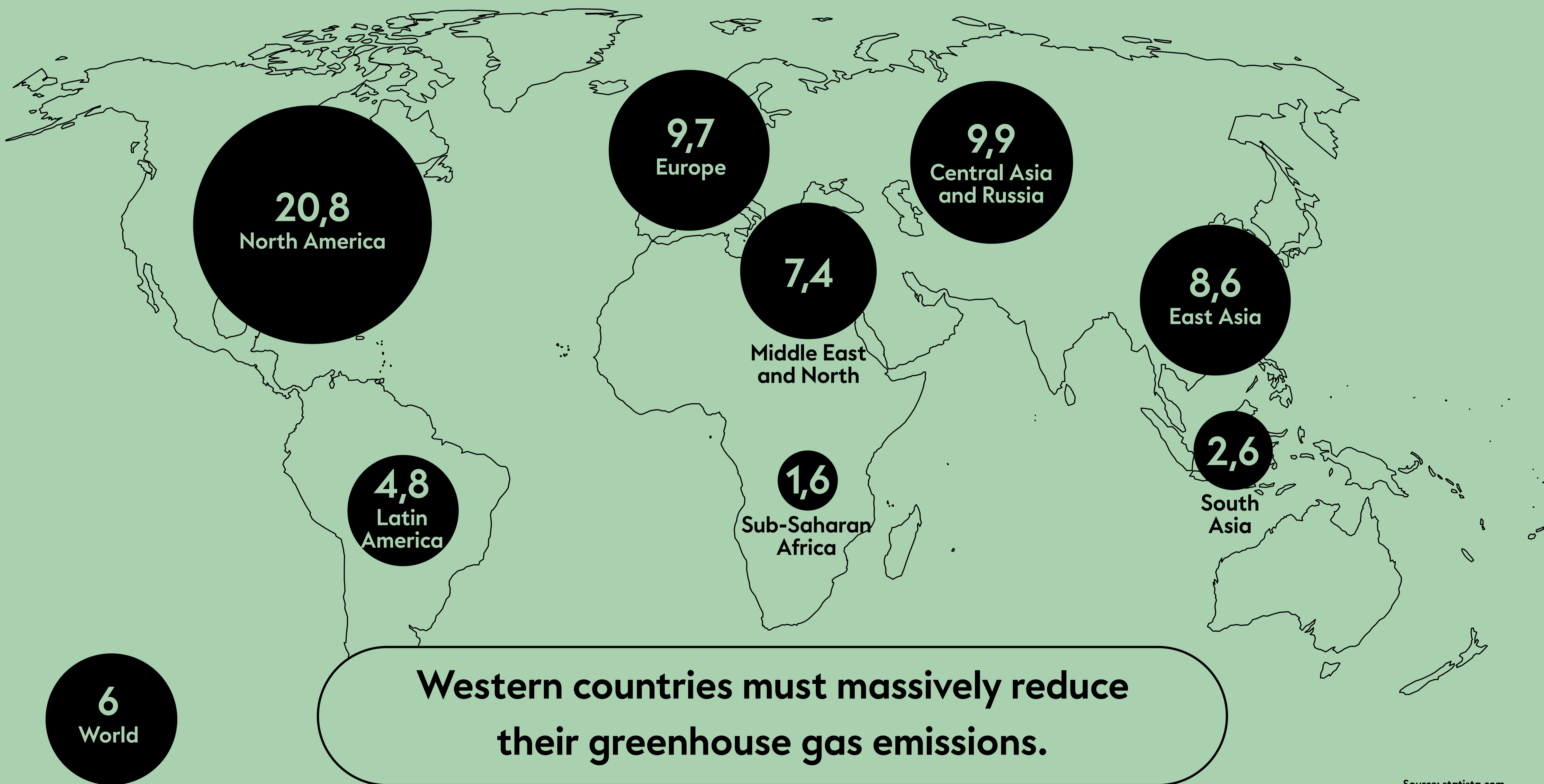
TRAVEL
LESS
WITHOUT
LOSS

Worldwide, global emissions were around 6 tons of CO₂-eq per person per year in 2021, 16% more than in 1990.

To reach the objectives of the Paris Agreement, the global average must not exceed 2 tons of CO₂-eq per person per year.

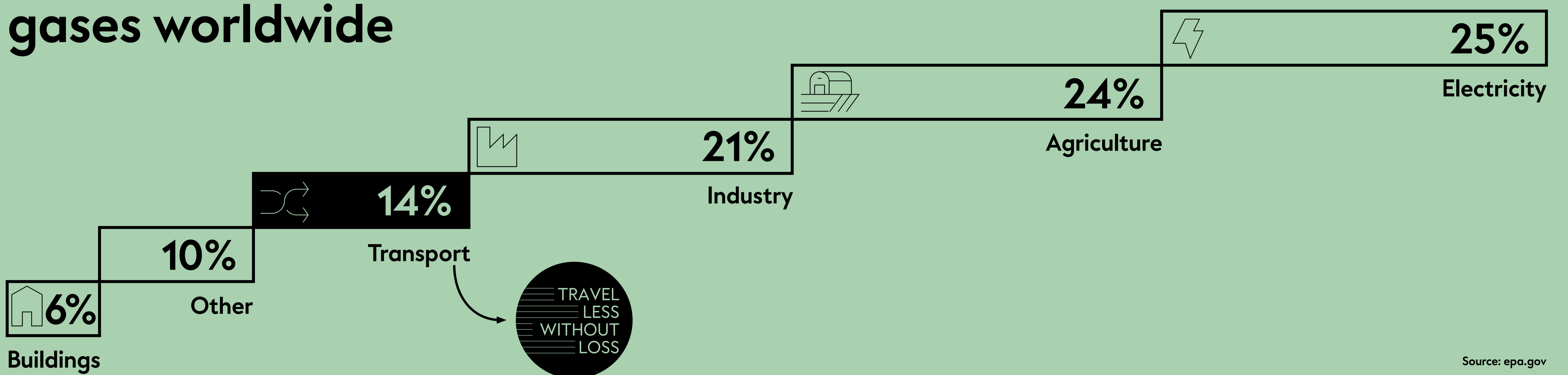
Global inequality of ecological footprint

Average CO₂ emissions per capita in the selected regions in 2019, in tons of CO₂-eq



Source: statista.com

Main sources of greenhouse gases worldwide



Source: epa.gov

To meet the objectives of the Paris Agreement, the worldwide average per capita CO₂-eq emissions must not exceed 2 tons per year.