

Turnitin Similarity, the Moodle plug-in to check similarity in assignment: a quick how-to manual

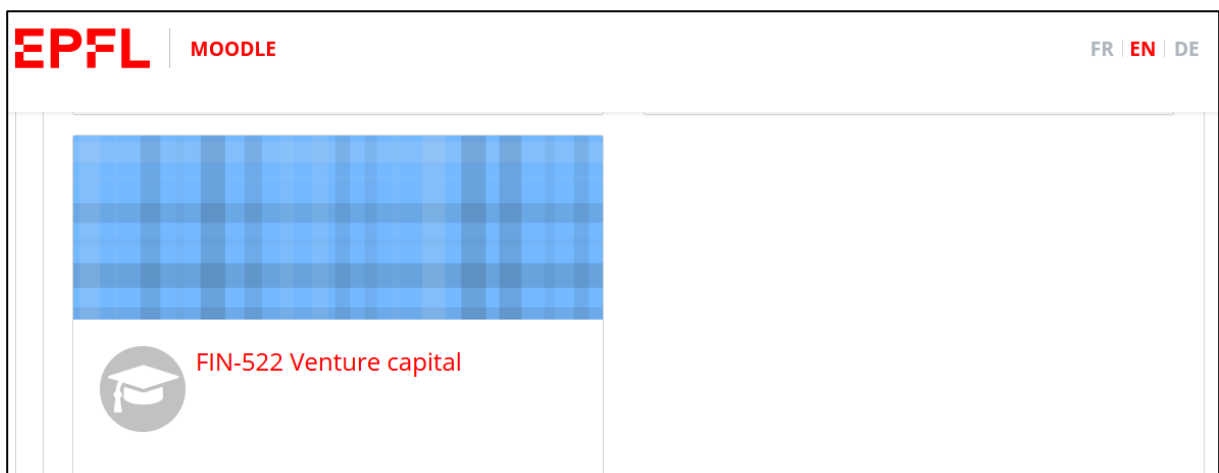
This *how-to* aims to guide you to set up similarity check for assignments handed in via Moodle.

What is Turnitin Similarity?

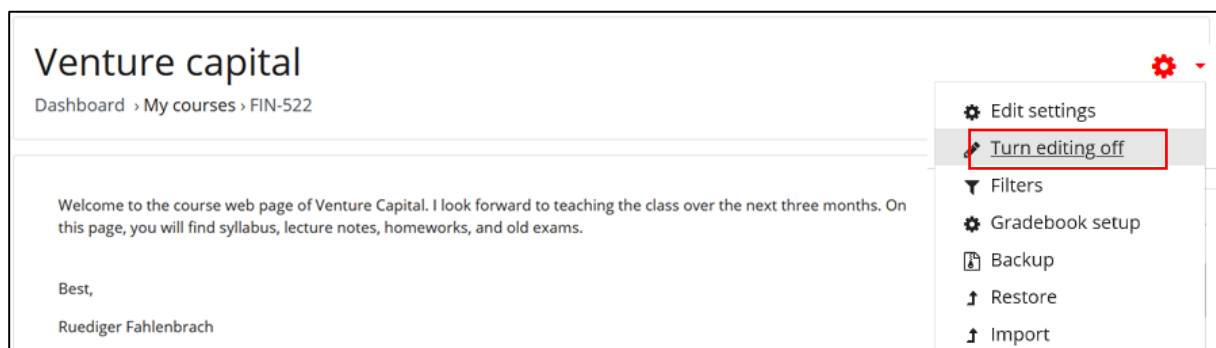
It is a plugin integrated to EPFL's instance of Moodle. This plug-in can be used to create an assignment hand-in section that will generate a similarity check report for each assignment.

How do I set up an assignment hand-in section on Moodle?

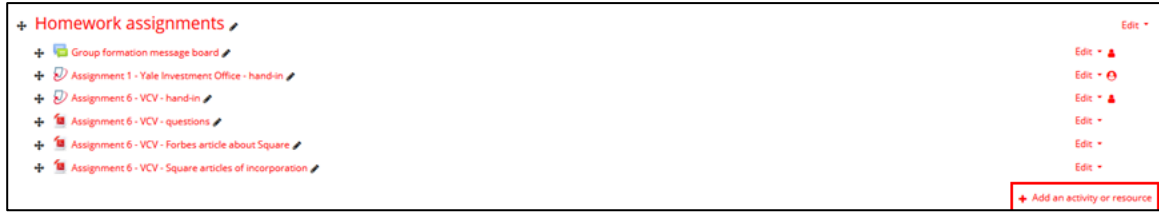
1. Login to moodle.epfl.ch
2. Select your course



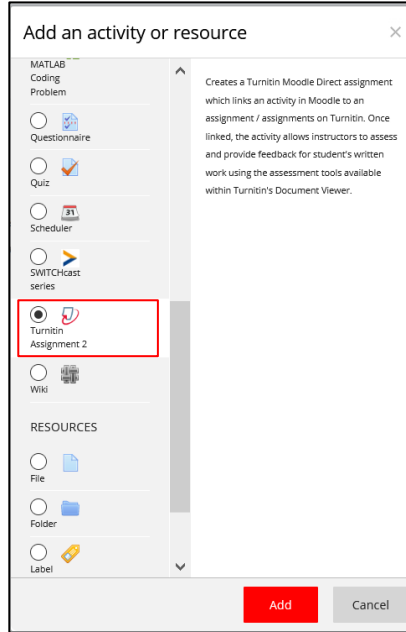
3. By going under the **edit** settings drop down menu, select **turn editing on**



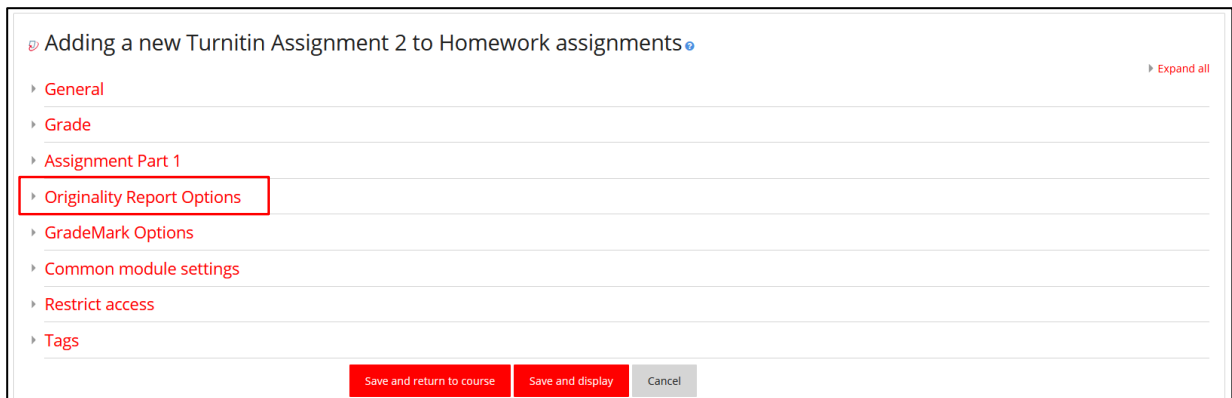
4. Add an activity or resource



5. Add a “Turnitin Assignment 2”



6. First, fill in your desired properties of the assignment under the drop down menu points “General”, “Grade”, and “Assignment Part 1”. To handle settings regarding the similarity check software *Turnitin*, choose the drop down menu point “Originality Report Options”.



7. Choose settings for the assignment

Originality Report Options

Allow Submissions after the Due Date: No

Report Generation Speed: Generate reports on due date (students can...)

Store Student Papers: Institutional Repository (Where Applicable)

Note: If you do not select "Yes" for at least one of the "Check against..." options below then an Originality report will NOT be generated.

Check against stored student papers: Yes

Check against internet: Yes

Check against Journals, periodicals and publications: Yes

Check against Institutional Repository: No

Exclude Bibliography: No

Exclude Quoted Material: No

Exclude Small Matches: Percent

- a. **Store Student Papers:** You should use *Turnitin* to store the submitted student solutions in an EPFL repository. Then, they serve as a basis against which *Turnitin* will check future submissions for plagiarism (great if you use homework multiple years in a row). Please select EPFL repository "Institutional Repository".
- b. **Check against:** Choose the source against which *Turnitin* checks the student submissions
- c. **Exclude:** Usually the bibliography and quoted materials increase the percentage of overlap of students' solutions with the sources in the repositories. Therefore, you may want *Turnitin* to ignore these parts and focus on the more relevant sections of the submission for similarity.

8. Add the "Turnitin Assignment 2" to your course page on Moodle

Adding a new Turnitin Assignment 2 to Homework assignments

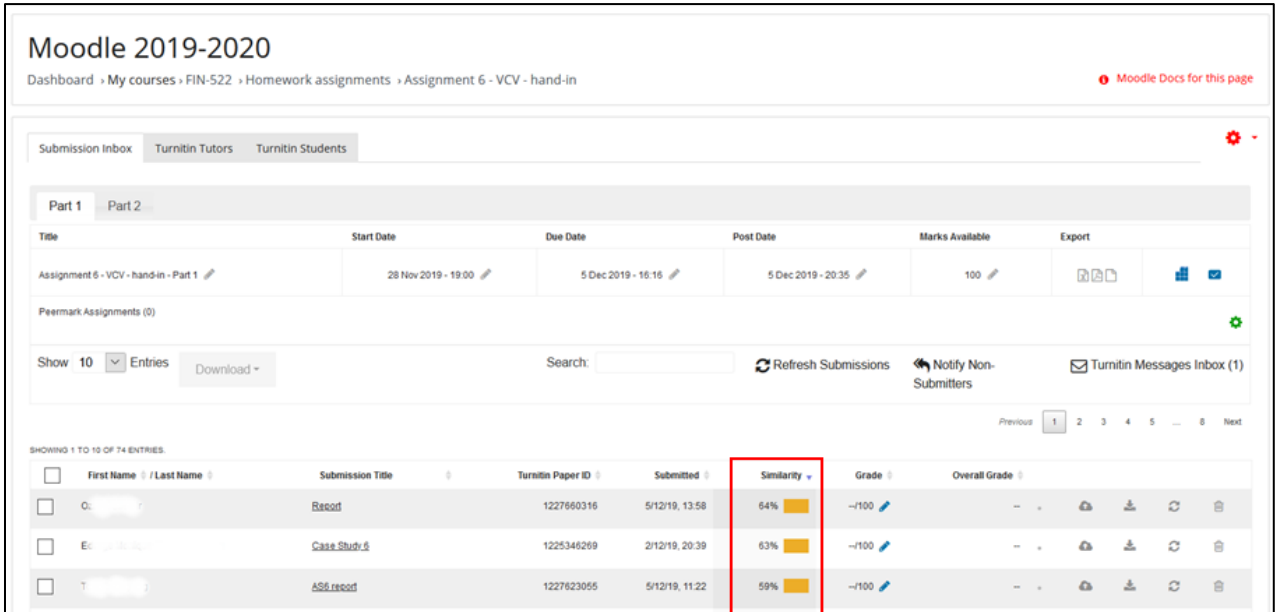
- General
- Grade
- Assignment Part 1
- Originality Report Options
- GradeMark Options
- Common module settings
- Restrict access
- Tags

Save and return to course | Save and display | Cancel

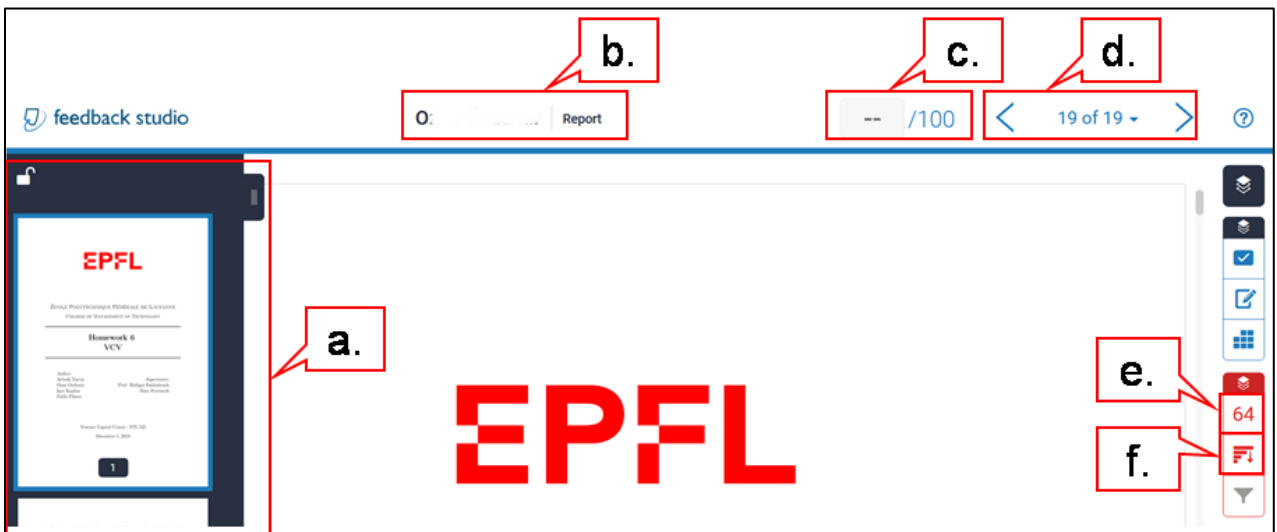
9. Turn editing off

How can I check the similarity scores for submitted assignment?

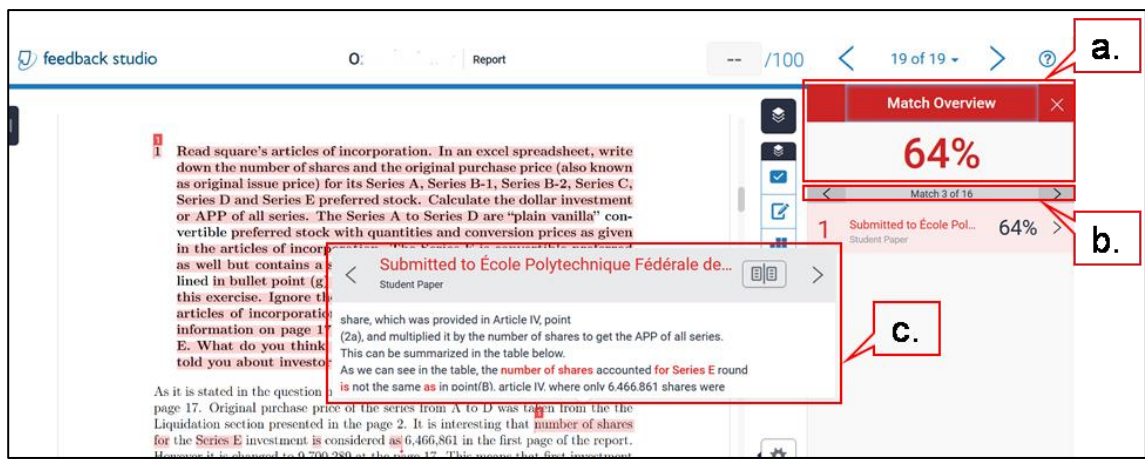
Once students have submitted their assignments, the similarity scores are displayed on the assignment's overview page, which you can access by clicking on the assignment hand-in link if you have the authorized status. Submissions can also be sorted by similarity score.



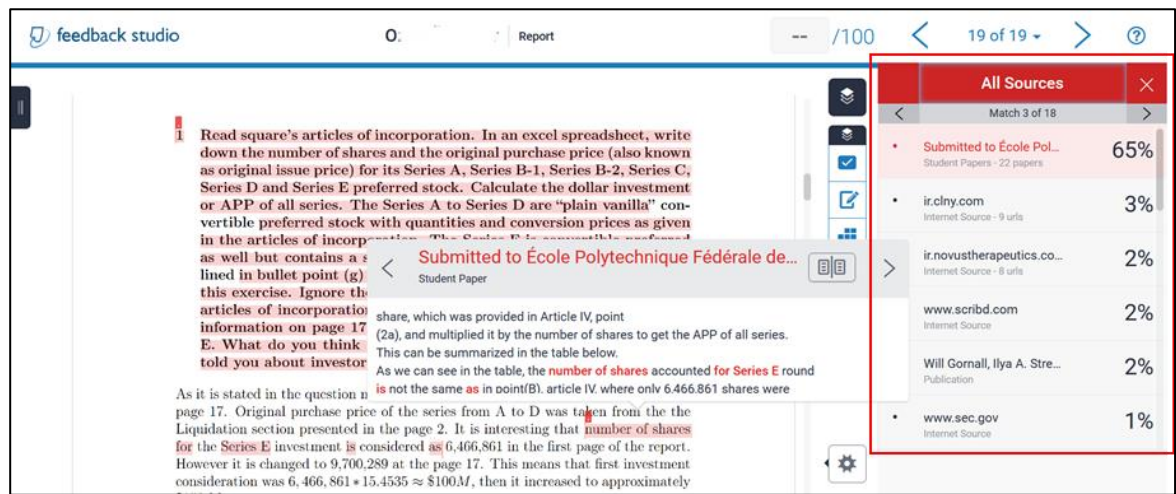
1. If you click on a submission's similarity score, Turnitin's feedback studio opens in a new tab (please find further details below)



- a. Page navigation
 - b. Student's name
 - c. Student's assignment grade
 - d. Number of handed in assignments
 - e. Match overview: click to analyze the match breakdown (for further details see step 2)
 - f. All sources: click to analyze the sources of matches (for further details see step 3)
2. Match overview (please find further details below)



- a. **Match overview** displays the overall similarity score: This score is just a calculated percentage of the document that has similarities with content indexed in the software provider’s database. The score itself doesn’t mean anything. It has to be analyzed by a human in order to be meaningful.
 - b. **Number of text passages** identified as a match. This is used to calculate the similarity score. Using the arrows, you may flip through the identified matches.
 - c. The **corresponding text passage** in the matched document of the current match: to get a closer look, click on the title of the pop-up to open the corresponding document
3. **All sources:** you may click on each identified source of matched documents to have a look at each document or link subsumed under this source



How do I upload my own work or single documents to check for similarity?
 Please refer to the complementary solution: iThenticate. A short *how-to* is available here: go.epfl.ch/ithenticate-guide if you want to use this tool.

Find the latest version of this document on go.epfl.ch/turnitin-guide