

## School of Life Sciences (SV)

### GENDER MONITORING EPFL 2015-2016

## TABLE OF CONTENTS

<b>Leakly Pipeline</b> .....	<b>p.2</b>
<b>Bachelor Students</b> .....	<b>p.3</b>
- <i>Students, number and %</i>	<i>p.3</i>
- <i>Percentage per nationality and residence</i>	<i>p.3</i>
	<i>p.3</i>
<b>Master Students</b> .....	<b>p.4</b>
- <i>Students, number and %</i>	<i>p.4</i>
- <i>Percentage per nationality and residence</i>	<i>p.4</i>
	<i>p.4</i>
<b>PhD Students</b> .....	<b>p.5</b>
- <i>Students, number and %</i>	<i>p.5</i>
- <i>Percentage per nationality and residence</i>	<i>p.5</i>
	<i>p.5</i>
<b>Scientific Collaborators</b> .....	<b>p.6</b>
- <i>Scientific collaborators (excluding assistants),</i>	<i>p.6</i>
- <i>Senior scientists (MER)</i>	<i>p.6</i>
<b>Professors</b> .....	<b>p.7</b>
- <i>Tenure Track Assistant Professors</i>	<i>p.7</i>
- <i>Associate Professors and Full Professors</i>	<i>p.7</i>
- <i>Percentage of women in professorial positions</i>	<i>p.7</i>
<b>Abréviations et notes techniques</b> .....	<b>p.8</b>

## LEAKY PIPELINE

The “Leaky Pipeline” presents an overview, at a given time, of the share of women and men at different stages of the academic trajectory. The graph below gathers data from SV School for the years 2010 and 2015.

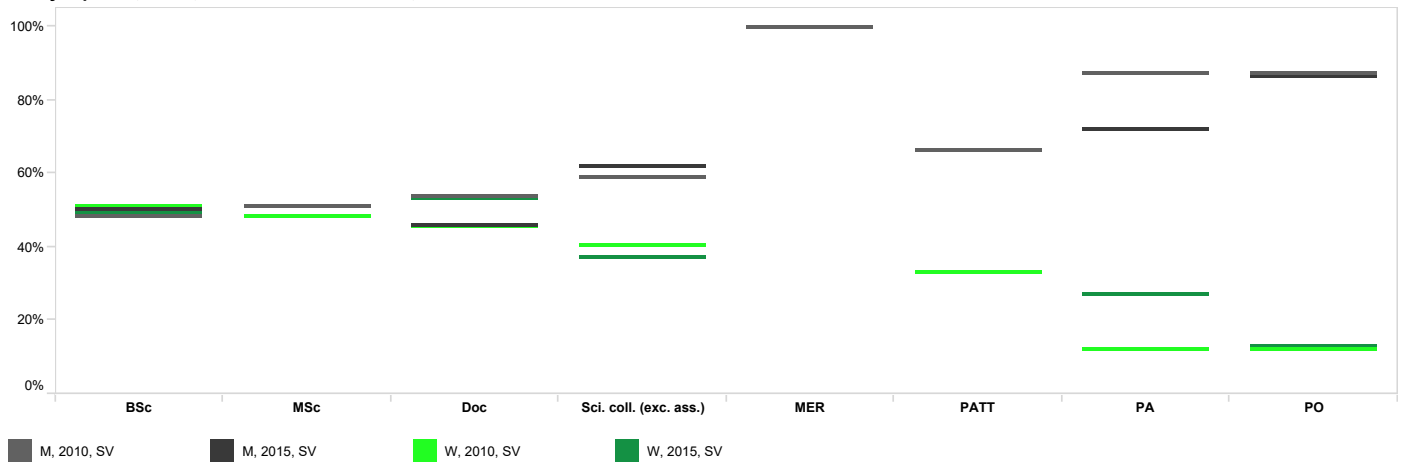
The percentages of women and men among Bachelor and Master students have hardly changed and are around 50%. The percentage of female PhD students has meanwhile increased from 46% in 2010 to 54% in 2015.

The percentages of scientific collaborators (excluding assistants) in SV have slightly changed between 2010 and 2015. Women account for 41% in 2010 and 38% in 2015. In 2010 and in 2015, there aren't any MER woman in SV. This staff category displays a very low headcount (2 FTE in 2005, 5 FTE in 2015).

Among PATT in SV, the percentage of women is 33% in 2010 and in 2015.

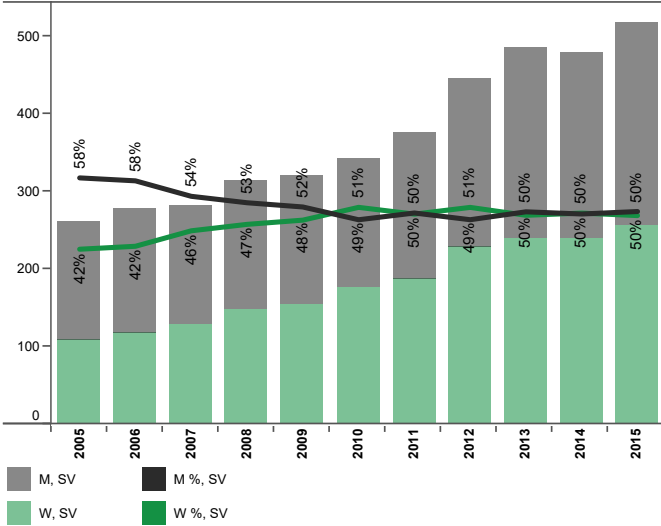
At PA level, the percentage of women has increased from 13% in 2010 to 28% in 2015. The percentage of women among PO has increased from 12% in 2010 to 13% in 2015.

Leaky Pipeline, EPFL, School of Life Sciences, 2010 and 2015



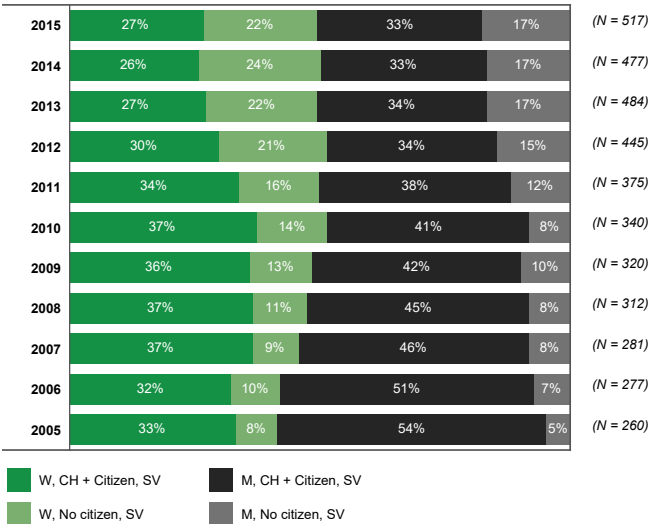
# BACHELOR STUDENTS

Students, number and %, School of Life Sciences, Bachelor, 2005-2015



The number of Bachelor students in SV has increased from 260 in 2005 to 519 in 2015. The increase has been higher on the female students' side (factor 2.4) than on the male students' side (factor 1.7). The percentage of female Bachelor students in SV has increased from 42% in 2005 to 50% in 2015

Percentage per nationality and residence, School of Life Sciences, Bachelor, 2005-2015



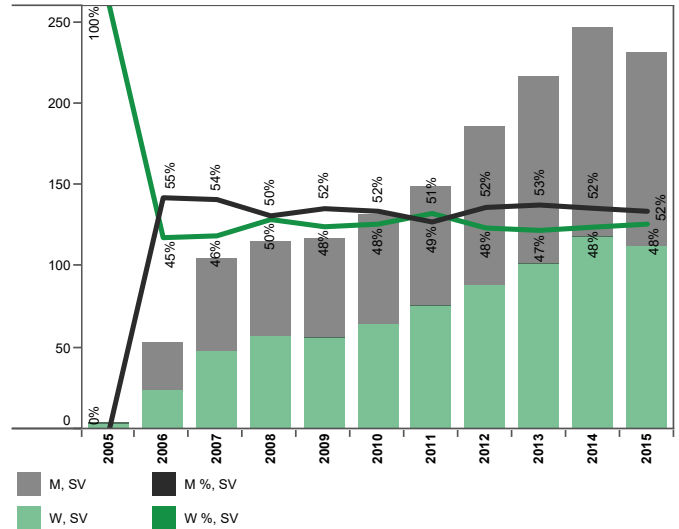
The majority of female and male students in SV are of Swiss origin (= Swiss nationals or schooled in Switzerland). The Bachelor students' population in SV has become increasingly internationalized. Among women the percentage of Swiss students is 55% in 2015 against 81% in 2005. The percentage of Swiss male Bachelor students is 66% in 2015 against 91% in 2005.

The proportion of women among Swiss students has increased from 38% in 2005 to 45% in 2015. As for foreign students, the share of women has evolved from 64% in 2005 to 56% in 2015.

## MASTER STUDENTS

The number of Master students has increased from 53 in 2006 to 231 in 2015. During this period, the percentage of female Master students has fluctuated between 45% and 51%, with an average rate of 48%.

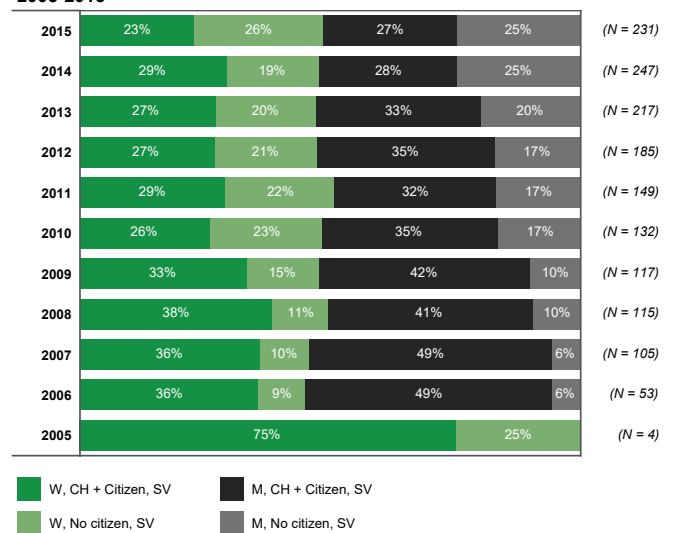
Students, number and %, School of Life Sciences, Master, 2005-2015



Between 2006 and 2015 the male and female Master students' population in SV has become increasingly internationalized. In 2015, 53% of female students and 48% of male students are coming from countries other than Switzerland.

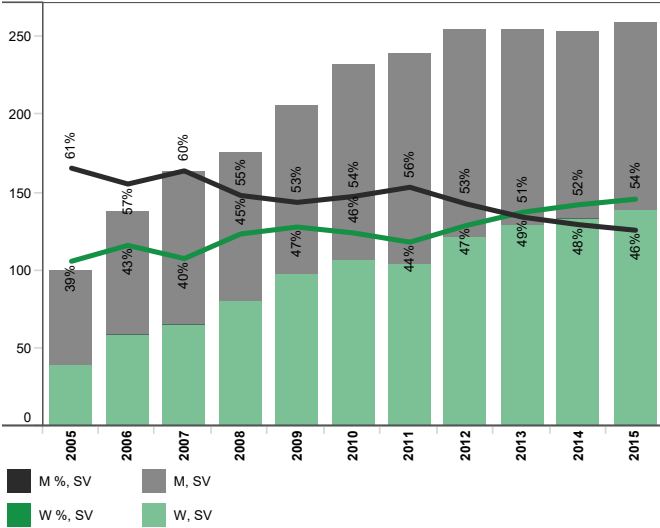
The proportion of women among Swiss Master students in SV has fluctuated between 42% and 51% and among foreign Master students between 43% and 63%.

Percentage per nationality and residence, School of Life Sciences, Master, 2005-2015



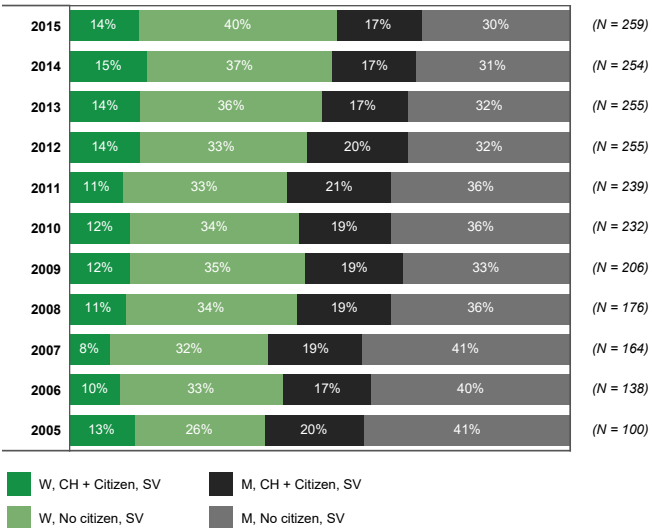
# PHD STUDENTS

Students, number and %, School of Life Sciences, Doctorate, 2005-2015



The number of PhD students has increased from 100 in 2005 to 259 in 2015. The number of female PhD students has increased more during this period than the number of male PhD students. The percentage of female PhD students has risen from 39% in 2005 to 54% in 2015.

Percentage per nationality and residence, School of Life Sciences, Doctorate, 2005-2015

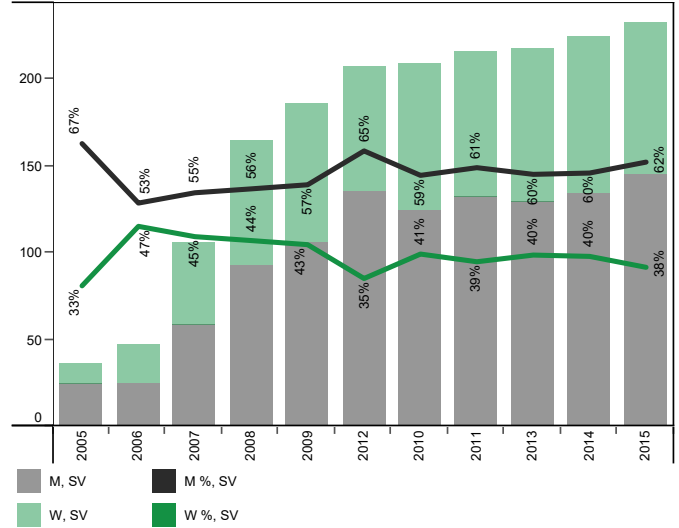


The majority of PhD students are coming from countries other than Switzerland (= of foreign nationality and schooled abroad). Among female PhD students, the share of citizens from countries other than Switzerland is 67% in 2005 and 74% in 2015. Among male PhD students this percentage evolves from 67% in 2005 to 63% in 2015.

Among Swiss PhD students (= Swiss nationals or schooled in Switzerland), the proportion of women fluctuates between 30% and 48%. Among foreign PhD students, the proportion of women fluctuates between 39% and 57%.

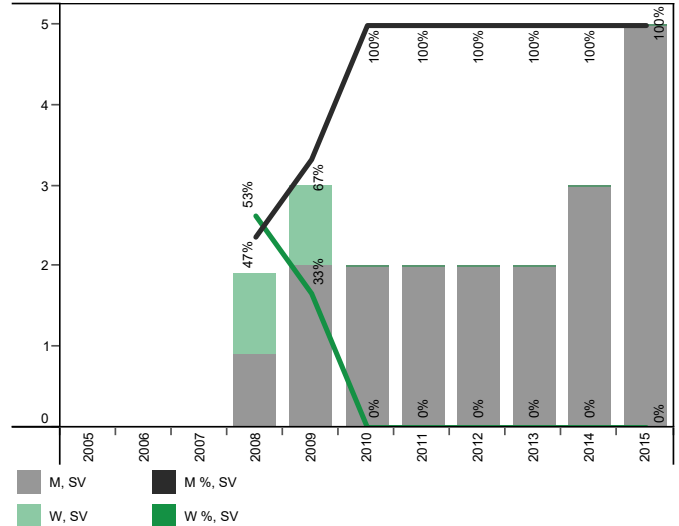
## SCIENTIFIC COLLABORATORS

Scientific collaborators, number and %, School of Life Sciences, 2005-2015



The headcount of scientific collaborators (excluding assistants) has increased from 36.5 FTE in 2005 to 232.5 FTE in 2015. The percentage of women fluctuates between 33% and 47% during this period, with an average rate of 40%. It is at 38% in 2015.

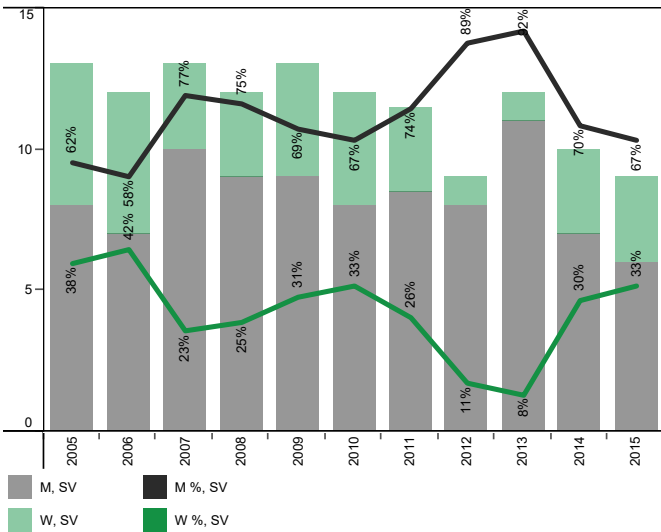
Senior scientists (MER), number and %, School of Life Sciences, 2005-2015



The headcount of MER in SV is very small. It consisted of 1.9 FTE in 2008 and 5 FTE in 2015. Except for 2008 and 2009, there are no women among MER.

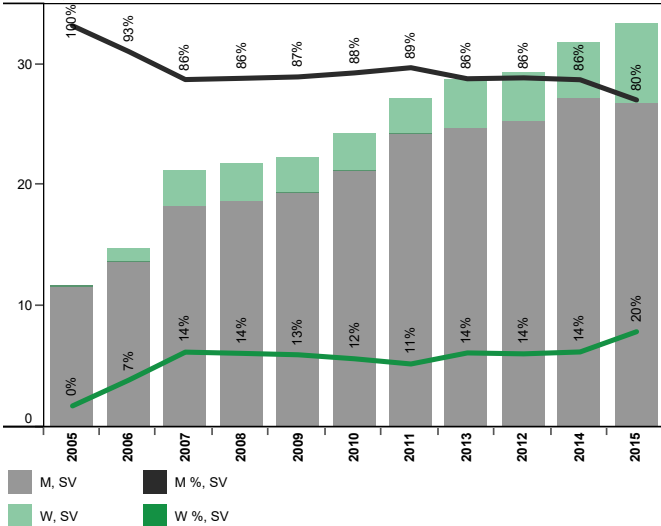
# PROFESSORS

**Tenure Track Assistant Professors, School of Life Sciences, FTE and %, 2005-2015**



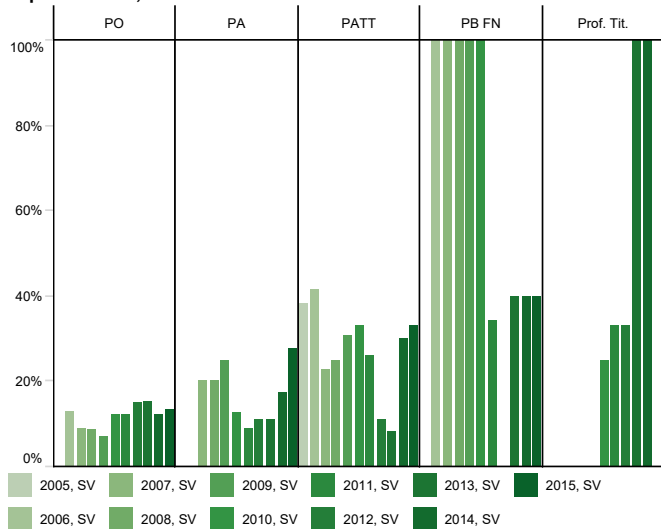
The headcount of PATT comprises between 9 and 13 FTE during the period from 2005 to 2015. The percentage of FTE among PATT ranges between 8% and 42% and is on average 30%.

**Associate Professors and Full Professors, School of Life Sciences, FTE and %, 2005-2015**



The headcount of PO and PA has increased from 11.7 FTE in 2005 to 33.3 FTE in 2015. The percentage of women professors has risen from 7% in 2006 to 20% in 2015.

**Percentage of women in professorial positions, School of Life Sciences, % per function, 2005-2015**



The headcount of adjunct professors and of Swiss National Science Foundation-funded professors are very low and do not exceed 4 FTE for the former and 2.9 FTE for the latter.

The headcount of PO has increased from 6.7 FTE in 2005 to 18.8 FTE in 2015. The percentage of women among PO fluctuates. The percentage is at a higher level between 2011 and 2015 compared to the period 2005 to 2010.

The headcount of PA has increased from 5 FTE in 2005 to 14.5 FTE in 2015. The percentage of women among PA fluctuates but reaches with 28% in 2015 an increasing rate compared to the 20% of 2005.



## ABBREVIATIONS AND TECHNICAL NOTES

### Data

Data has been provided by the Budget and Planning Manager, attached to the Vice Presidency for Resources and Infrastructure. Most data are available online at [vppl.epfl.ch/figures](http://vppl.epfl.ch/figures)

### Students

*Data on students are established approximately seven weeks after the start of the fall semester.*

**BSc** - Bachelor of Science

**MSc** - Master of Science

**PhD** - EPFL PhD students

**Place of education** - refers to the distinction from the Federal Office of Statistics between Swiss students and citizens of another nationality who have been schooled in Switzerland, and foreign students who have been schooled abroad

**CH + residents** - Swiss students and foreign citizens living in Switzerland and who have been schooled in Switzerland

**Non-resident** - Foreign students who have been educated abroad

### Staff

*Staff data are established at the end of the calendar year, on December 31.*

**FTE** - Full time equivalent

**PO** - Full professors

**PA** - Associate professors

**PATT** - Tenure Track Assistant Professors

**PB FN** - Swiss National Science Foundation-funded Professors.

**PT** - Adjunct professors

**MER** - Senior scientists

**Scientific collaborators** - Persons hired by EPFL after a PhD or equivalent professional experience, assuming training and research missions.

**Technical staff** - employees of a unit responsible of technical tasks.

**Administrative staff** - employees of a unit responsible of administrative tasks

### Schools and sections

**SV** - School of Life Sciences