

School of Life Sciences (SV)
GENDER MONITORING
EPFL 2017-2018

TABLE OF CONTENTS

Leakly Pipeline	p.2
Bachelor Students	p.3
- <i>Students, number and %</i>	<i>p.3</i>
- <i>Percentage of women per school</i>	<i>p.3</i>
- <i>Percentage per nationality and residence</i>	<i>p.3</i>
Master Students	p.4
- <i>Students, number and %</i>	<i>p.4</i>
- <i>Percentage of women per school</i>	<i>p.4</i>
- <i>Percentage per nationality and residence</i>	<i>p.4</i>
PhD Students	p.5
- <i>Students, number and %</i>	<i>p.5</i>
- <i>Percentage of women per school</i>	<i>p.5</i>
- <i>Percentage per nationality and residence</i>	<i>p.5</i>
Scientific Collaborators	p.6
- <i>Scientific collaborators (excluding assistants),</i>	<i>p.6</i>
- <i>Senior scientists (MER)</i>	<i>p.6</i>
Professors	p.7
- <i>Tenure Track Assistant Professors</i>	<i>p.7</i>
- <i>Associate Professors and Full Professors</i>	<i>p.7</i>
- <i>Percentage of women in professorial position</i>	<i>p.7</i>
Abbreviations and technical notes	p.8

LEAKY PIPELINE

The graph below gathers data from SV School for the years 2008 and 2017, allowing to see the evolution of the percentages of men and women at the different levels of the academic trajectory. The detailed evolution is indicated by the graphs on the following pages.

The percentage of women among SV Bachelor students increased from 47% in 2008 (148/312 students) to 55% in 2017 (301/ 550 students).

The percentage of women and men among SV Master students has remained very constant. It was 50% in 2008 (57/115 students) and 49% in 2017 (136/276 students).

The percentage of PhD students rose from 45% in 2008 (80/176 doctoral students) to 49% in 2017 (132/268 doctoral students).

The percentage of female scientific staff (without assistants) in SV fell from 44% in 2008 (72.1/164.2 FTE) to 39% in 2017 (90.3/231.3 FTE).

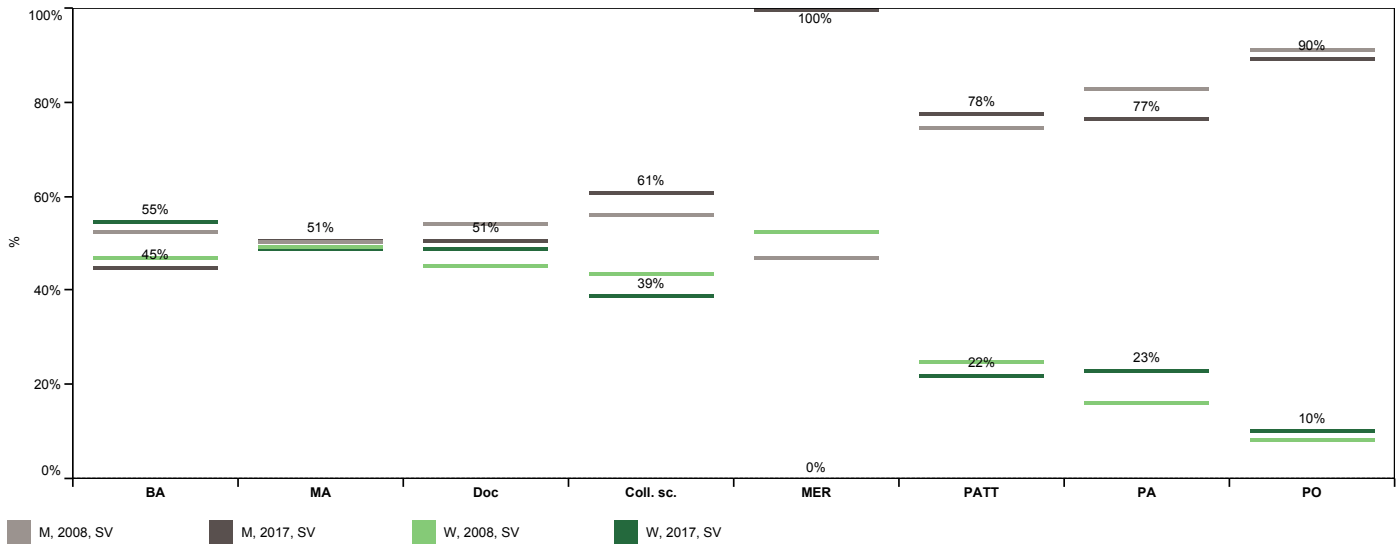
In 2008, women accounted for 53% of the MER workforce in SV (1/1.9 FTE). In 2017, their number of staff represents 0% (0/4.5 FTE).

Among the PATT in SV the percentage of women is 25% in 2008 (3/12 EFA), and 22% in 2017 (2/9 EFA).

At PA level, the percentage of women increased from 20% in 2008 (2/10 FTE) to 30% in 2017 (5/16.5 FTE).

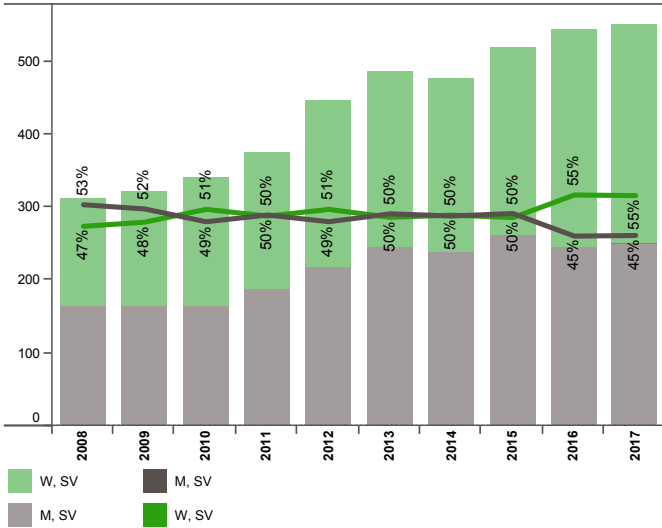
The percentage of women among OPs in SV increased from 9% in 2008 (1/11.7 FTE) to 10% in 2017 (2/19.5 FTE).

Leaky Pipeline, EPFL, School of Life Sciences (SV), 2008 and 2017



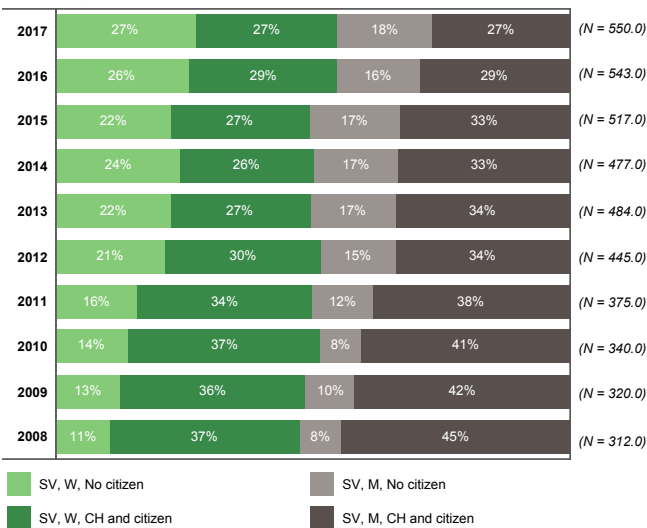
BACHELOR STUDENTS

Students, number and %, School of Life Sciences, Bachelor, 2008-2017



The percentage of women among SV Bachelor students increased from 47% in 2008 (148/312 students) to 55% in 2017 (301/550 students). The percentage of female Bachelor students in SV has thus increased again since 2015, the time of the last Gender Monitoring, when it was 50% (256/517).

Percentage per nationality and residence, School of Life Sciences, Bachelor, 2008-2017



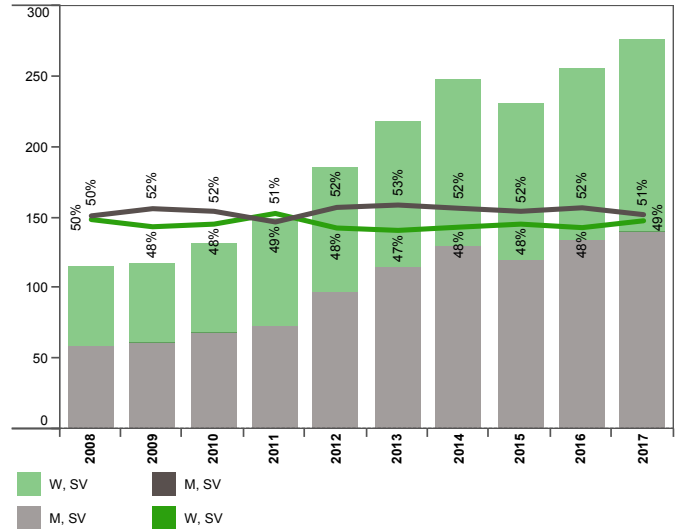
The majority of SV Bachelor students are of Swiss origin (Swiss nationals or students schooled in Switzerland). This is the case for 81% of students in 2008 and 54% in 2017. The SV student population at Bachelor level has therefore become internationalised.

The proportion of women among students of Swiss origin rose from 45% in 2008 to 51% in 2017. Among international students, the rate of women rose from 57% in 2005 to 60% in 2015.

MASTER STUDENTS

The percentage of women and men among Master students in SV has remained very constant. It was 50% in 2008 (57/115 students) and 49% in 2017 (136/276 students). In 2015, the time of the last Gender Monitoring, the percentage of women among Master students in SV was 48% (112/231).

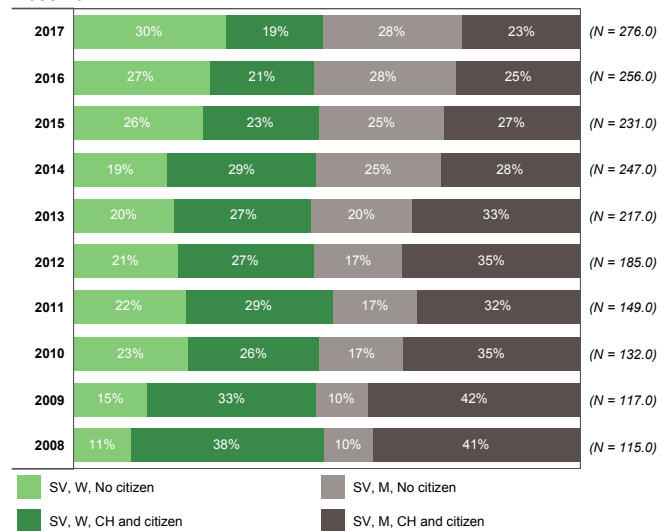
Students, number and %, School of Life Sciences, Master, 2008-2017



The population of Master students in SV has internationalised. In 2008, the rate of international students was 21%, in 2015 it was 50% and in 2017, 58% of Master students in SV come from countries other than Switzerland.

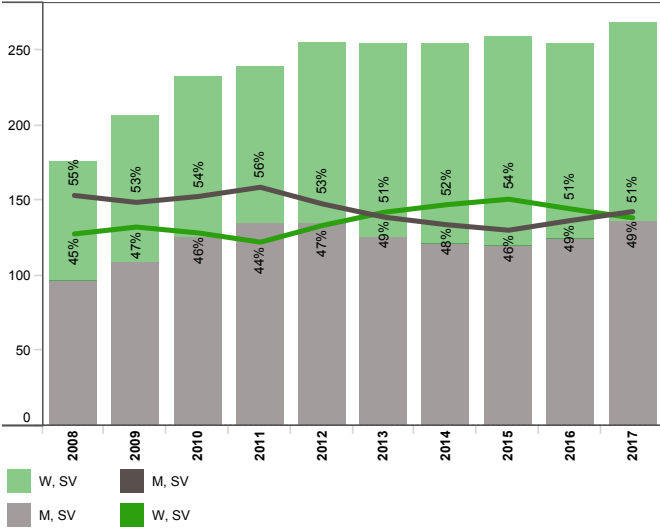
The percentage of women among Master's students in SV is slightly higher among students of international origin, where they are 54% in 2008, 51% in 2015, and 52% in 2017, than among students of Swiss origin, where they represent 48% of the workforce in 2008, 46% in 2015, and 45% in 2017.

Percentage per nationality and residence, School of Life Sciences, Master, 2008-2017



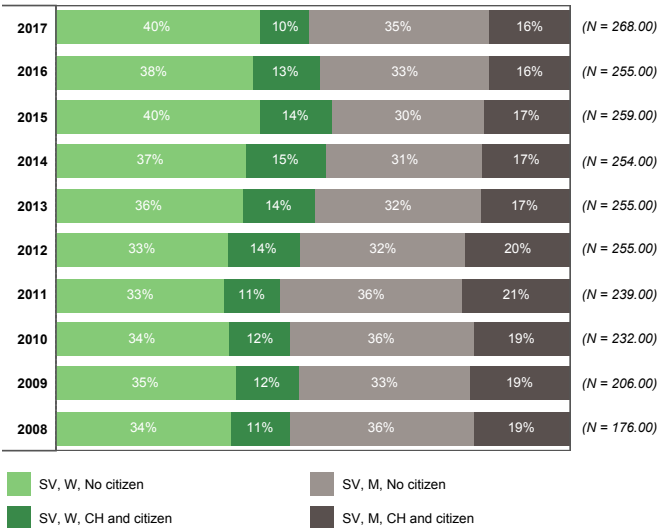
PHD STUDENTS

Students, number and %, School of Life Sciences, Doctorate, 2008-2017



The percentage of female PhD students rose from 45% in 2008 (80/176 PhD students) to 49% in 2017 (132/268 PhD students). The percentage of female PhD students in 2017 is down compared to 2015, the time of the last Gender Monitoring, when it stood at 54% (139/259 PhD students).

Percentage per nationality and residence, School of Life Sciences, Doctorate, 2008-2017



The majority of PhD students are of international origin (foreign nationality and schooled abroad): 70% in 2008 and 75% in 2017.

The percentage of women is higher among PhD students with an international origin. The percentage of female PhD students in this population was 49% in 2008, 57% in 2015, and 53% in 2017. Among Swiss PhD students (Swiss nationals or schooled in Switzerland), the percentage of women was 38% in 2008, 46% in 2015, and 38% in 2017.

SCIENTIFIC COLLABORATORS

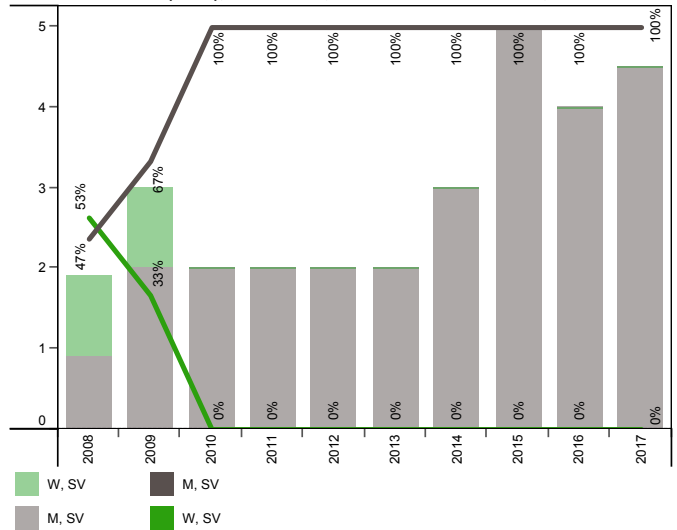
The percentage of female scientific staff (without assistants) in SV fell from 44% in 2008 (72.1/164.2 FTE) to 39% in 2017 (90.3/231.3 FTE).

The percentage of female scientific collaborators in 2017 has only slightly increased compared to 2015, the time of the last Gender Monitoring, when the percentage of women among male and female scientific collaborators in SV was 38% (87.4 FTE/ 232.5).

Scientific collaborators, FTE and %, School of Life Sciences, 2008-2017



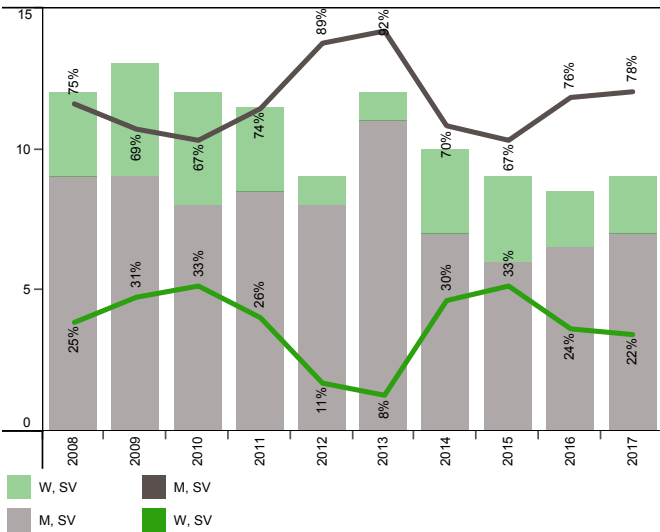
Senior scientists (MER), FTE and %, School of Life Sciences, 2008-2017



In 2008, women accounted for 53% of the MER workforce in SV (1/1.9 EFA). In 2017, their headcount is 0% (0/ 4.5 FTE). In 2015, at the time of the last Gender Monitoring, women also represented 0% (0/5 FTE) among MER in SV.

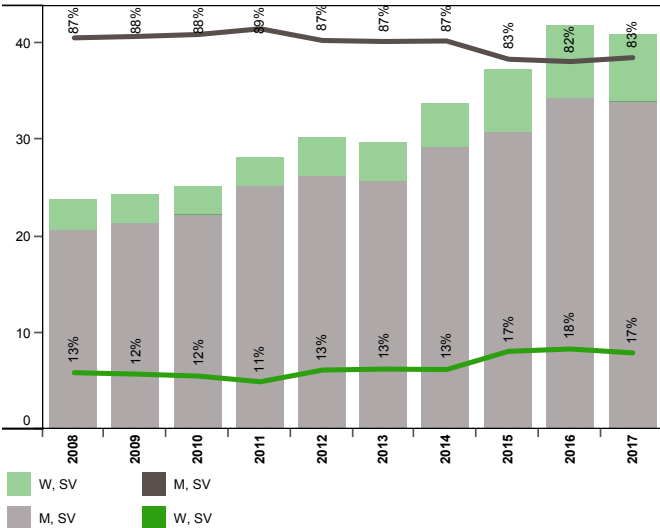
PROFESSEURES ET PROFESSEURS

Tenure Track Assistant Professors, School of Life Sciences, FTE and %, 2008-2017



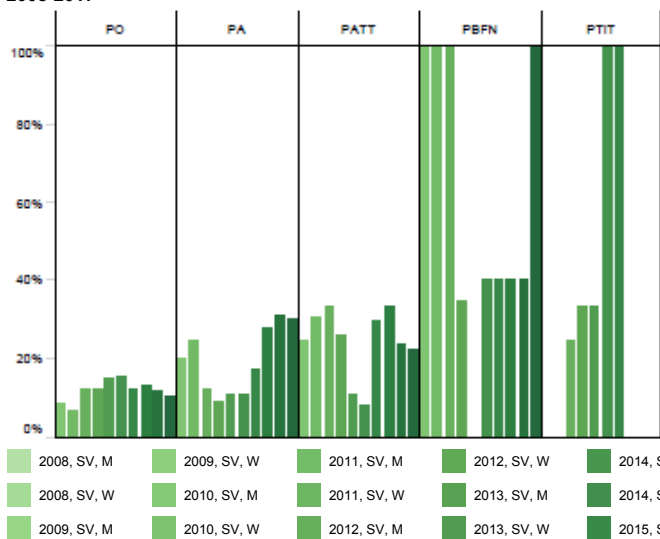
Among PATT in SV the percentage of women is 25% in 2008 (3/12 FTE), and 22% in 2017 (2/9 FTE). In 2015, at the time of the last Gender Monitoring, women represented 33% (3/9 FTE) among PATT in SV.

Associate Professors and Full Professors, School of Life Sciences, FTE and %, 2008-2017



The percentage of women among tenured professors (PO and PA) in SV increased from 14% in 2008 (3/21.7 FTE) to 19% in 2017 (7/36 FTE). In 2015, at the time of the last Gender Monitoring, women represented 20% (6.5/ 33.3 FTE) among SV tenured professors.

Percentage of women in professorial positions, School of Life Sciences, 2008-2017



The percentage of PO women in SV increased from 9% in 2008 (1/11.7 EFA) to 10% in 2017 (2 EFA/19.5). Among IPs, the percentage of women increased from 20% in 2008 (3 FTE/12) to 30% in 2017 (2 FTE/9).

The percentage of women among PATT in SV decreased from 25% in 2008 (3/12 FTE PATT) to 22% in 2017 (2/9 FTE).

The percentage of women among assistant professors without tenure track (PBFN) was 100% in 2008 (1/1) and 2017 (0.8/ 0.8). It was 40% (0.8/1.6 EFA) in 2015, at the time of the last Gender Monitoring.

In 2008 and 2017, there were 0% women among adjunct professors in SV. In 2008, this rate corresponds to 0/3 EPT of PTit. In 2017, as already in 2015, at the time of the last Gender Monitoring, 0% refers to 0/0 FTE. Between 2010 and 2014, 1 FTE of PTit is occupied by a woman.

ABBREVIATIONS AND TECHNICAL NOTES

Data

Apart from data on apprentices and managers, data has been provided by the Budget and Planning Officer attached to the Finance Vice-President. Most data are available online under: <https://information.epfl.ch/facts>

Students

Data on students are established approximately seven weeks after the start of the fall semester.

BSc - Bachelor of Science

MSc - Master of Science

PhD - EPFL PhD students

Place of education - refers to the distinction from the Federal Office of Statistics between Swiss students and citizens of another nationality who have been schooled in Switzerland, and foreign students who have been schooled abroad

CH + residents - Swiss students and foreign citizens living in Switzerland and who have been schooled in Switzerland

Non-resident - Foreign students who have been educated abroad

Staff

Staff data are established at the end of the calendar year, on December 31.

FTE - Full time equivalent

PO - Full professors

PA - Associate professors

PATT - Tenure Track Assistant Professors

PB FN - Swiss National Science Foundation-funded Professors.

PTit - Adjunct professors

MER - Senior scientists

Scientific collaborators - Persons hired by EPFL after a PhD or equivalent professional experience, assuming training and research missions.

Technical staff - employees of a unit responsible of technical tasks.

Administrative staff - employees of a unit responsible of administrative task

Schools

SV - School of Life Sciences